

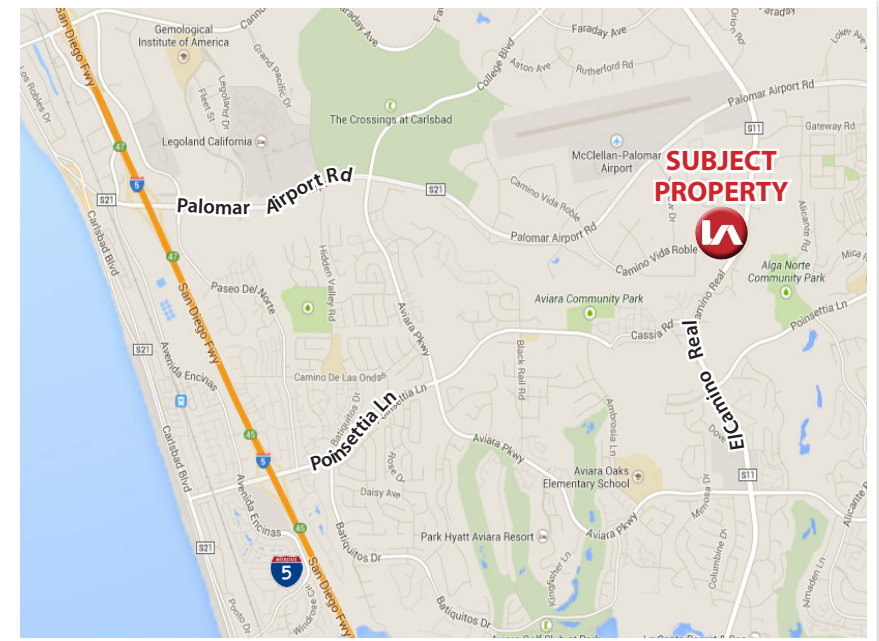
INDUSTRIAL/R&D/OFFICE FOR LEASE PALOMAR BUSINESS CENTER

2380/2382 CAMINO VIDA ROBLE & 6353 EL CAMINO REAL | CARLSBAD, CA 92011



BUSINESS CENTER AVAILABILITY & FEATURES

- » 2,136 SF Flex Suite
- » 2,160 SF Industrial Suite
- » Convenient location
- » Frontage on major commercial corridor
- » Nicely landscaped
- » On-site deli



DANIEL KNOKE
(760) 929-7836
dknoke@lee-associates.com
CalBRE Lic#01215373

PETER MERZ
(760) 448-1362
pmerz@lee-associates.com
CalBRE Lic#01269042

LEE & ASSOCIATES CRE SERVICES, INC. - NSDC
1900 Wright Place, Suite 200
Carlsbad, CA 92008
www.lee-associates.com

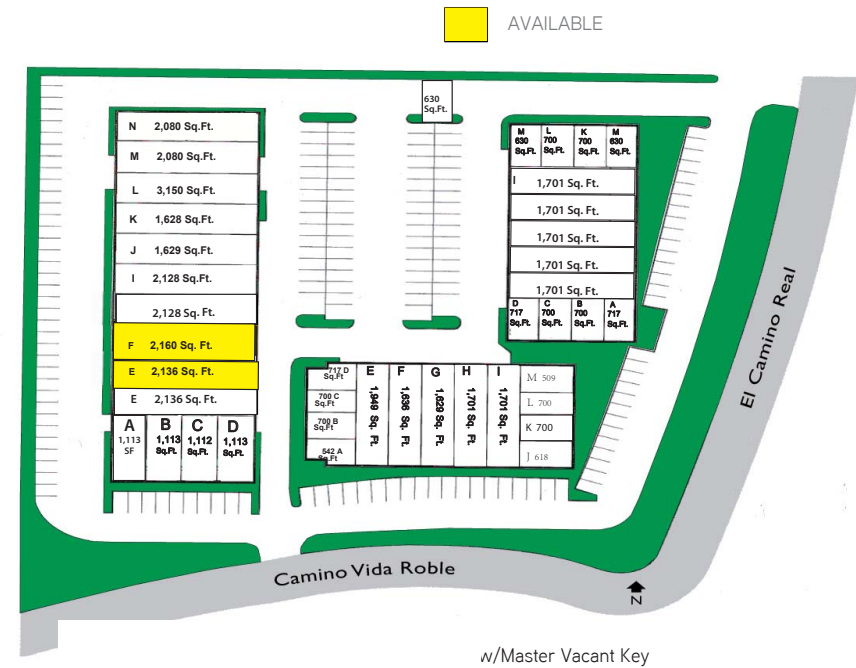
INDUSTRIAL/R&D/OFFICE FOR LEASE PALOMAR BUSINESS CENTER

2380/2382 CAMINO VIDA ROBLE & 6353 EL CAMINO REAL | CARLSBAD, CA 92011

AVAILABILITY

2380 Camino Vida Roble					
Suite#	Total SF	Office/Restroom	Rent/SF*	Available	Access
E	2,136	Reception, 4 offices, bull pen & warehouse	\$1.17 MG*	30 days	Call to Show
F	2,160	Reception, 2 offices, bullpen & warehouse	\$1.17 MG*	April 1, 2018	Call to Show

*All units charged a common are maintenance charge (CAM) of approximately \$0.11 per SF



DANIEL KNOKE
(760) 929-7836
dknoke@lee-associates.com
CalBRE Lic#01215373

PETER MERZ
(760) 448-1362
pmerz@lee-associates.com
CalBRE Lic#01269042

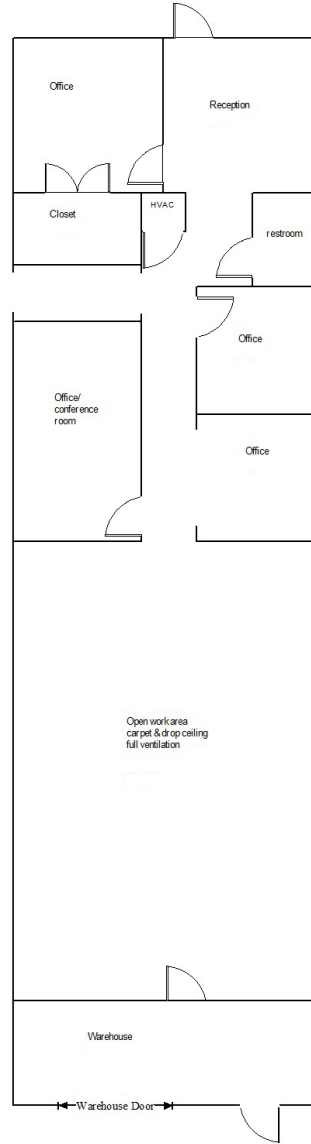
LEE & ASSOCIATES CRE SERVICES, INC. - NSDC
1900 Wright Place, Suite 200
Carlsbad, CA 92008
www.lee-associates.com

INDUSTRIAL/R&D/OFFICE FOR LEASE PALOMAR BUSINESS CENTER

2380/2382 CAMINO VIDA ROBLE & 6353 EL CAMINO REAL | CARLSBAD, CA 92011

2380 Camino Vida Roble

Suite E
2,136 SF



DANIEL KNOKE
(760) 929-7836
dknoke@lee-associates.com
CalBRE Lic#01215373

PETER MERZ
(760) 448-1362
pmerz@lee-associates.com
CalBRE Lic#01269042

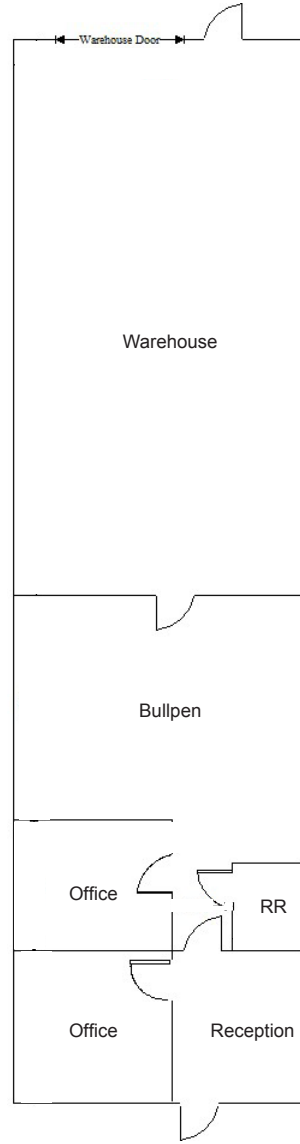
LEE & ASSOCIATES CRE SERVICES, INC. - NSDC
1900 Wright Place, Suite 200
Carlsbad, CA 92008
www.lee-associates.com

INDUSTRIAL/R&D/OFFICE FOR LEASE PALOMAR BUSINESS CENTER

2380/2382 CAMINO VIDA ROBLE & 6353 EL CAMINO REAL | CARLSBAD, CA 92011

2380 Camino Vida Roble

Suite F
2,160 SF



DANIEL KNOKE
(760) 929-7836
dknoke@lee-associates.com
CalBRE Lic#01215373

PETER MERZ
(760) 448-1362
pmerz@lee-associates.com
CalBRE Lic#01269042

LEE & ASSOCIATES CRE SERVICES, INC. - NSDC
1900 Wright Place, Suite 200
Carlsbad, CA 92008
www.lee-associates.com