

### LOCATION

Building 9  
12407 NE Marx Street  
Portland OR 97230

### TOTAL SQ. FT. OFFICE SQ. FT.

5,513 sq.ft.  
2,311 sq.ft.

### DRIVE IN DOORS DOCK HIGH DOORS CLEAR HEIGHT

1  
3  
18'6"

### FEATURES

4 miles to PDX Airport  
10 miles to Downtown  
Immediate access to I-205

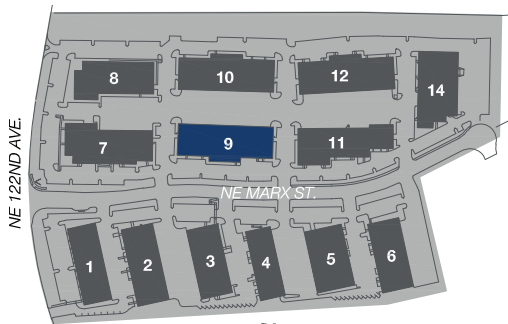
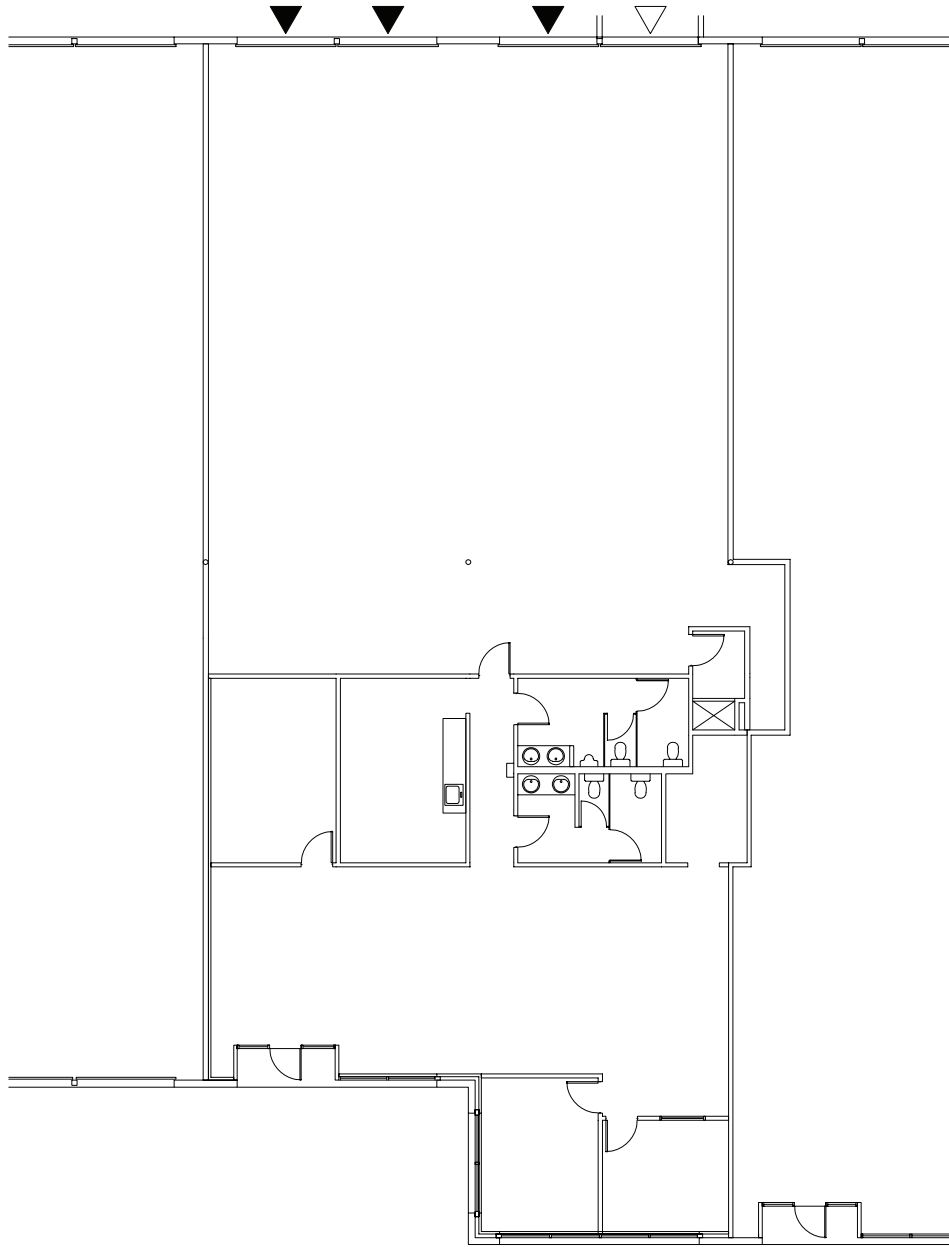
### RATE

\$.60/sq.ft. - Shell  
\$.90/sq.ft. - Office  
NNN

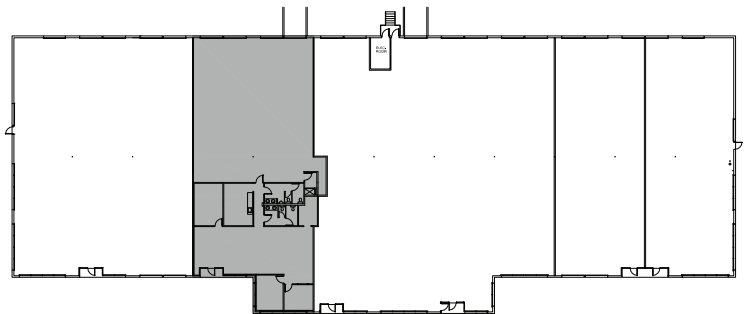
### LEASING CONTACT

Jake Bigby  
jakeb@pactrust.com  
360-737-6300





PACIFIC BUSINESS PARK  
Portland, OR 97230



## BUILDING PLAN

