

DEVELOPMENT LAND WITH 700+/- SF OF FRONTAGE ON APPLEWAY



Location:

19223 E Appleway
Spokane Valley, WA

Property Specifications:

Site Size: 162,347+/- SF
Zoning: Regional Commercial
Parcel: 55173.0519
2013 Taxes: \$8,393.28
2009 Traffic Counts:
Appleway: 9,300 cars per day

For Sale:

\$750,000.00

(\$4.62/SF)

For Lease:

\$5,749.80/Mo NNN

(\$0.04/sf/mo)

Owner may be willing to carry
partial contract for qualified buyer.

For more information:

Dennis Beringer
Byrd Real Estate Group, LLC
509-326-8080
Cell 509-209-1748
Dennis@byrdrealestategroup.com

FOR SALE/LEASE

Excellent Development Site

- Easy I-90 access via Barker Rd. & Country Vista Drive/Appleway Ave. Exit & Broadway Ave.

<u>2011 DEMOGRAPHICS:</u>	<u>1 mile</u>	<u>3 mile</u>	<u>5 mile</u>
Daytime Population:	3,789	32,304	70,534
Total Population:	4,861	29,549	73,643
Med. HH Income:	\$49,999	\$53,150	\$51,161
Avg. HH Income:	\$58,457	\$73,865	\$69,245



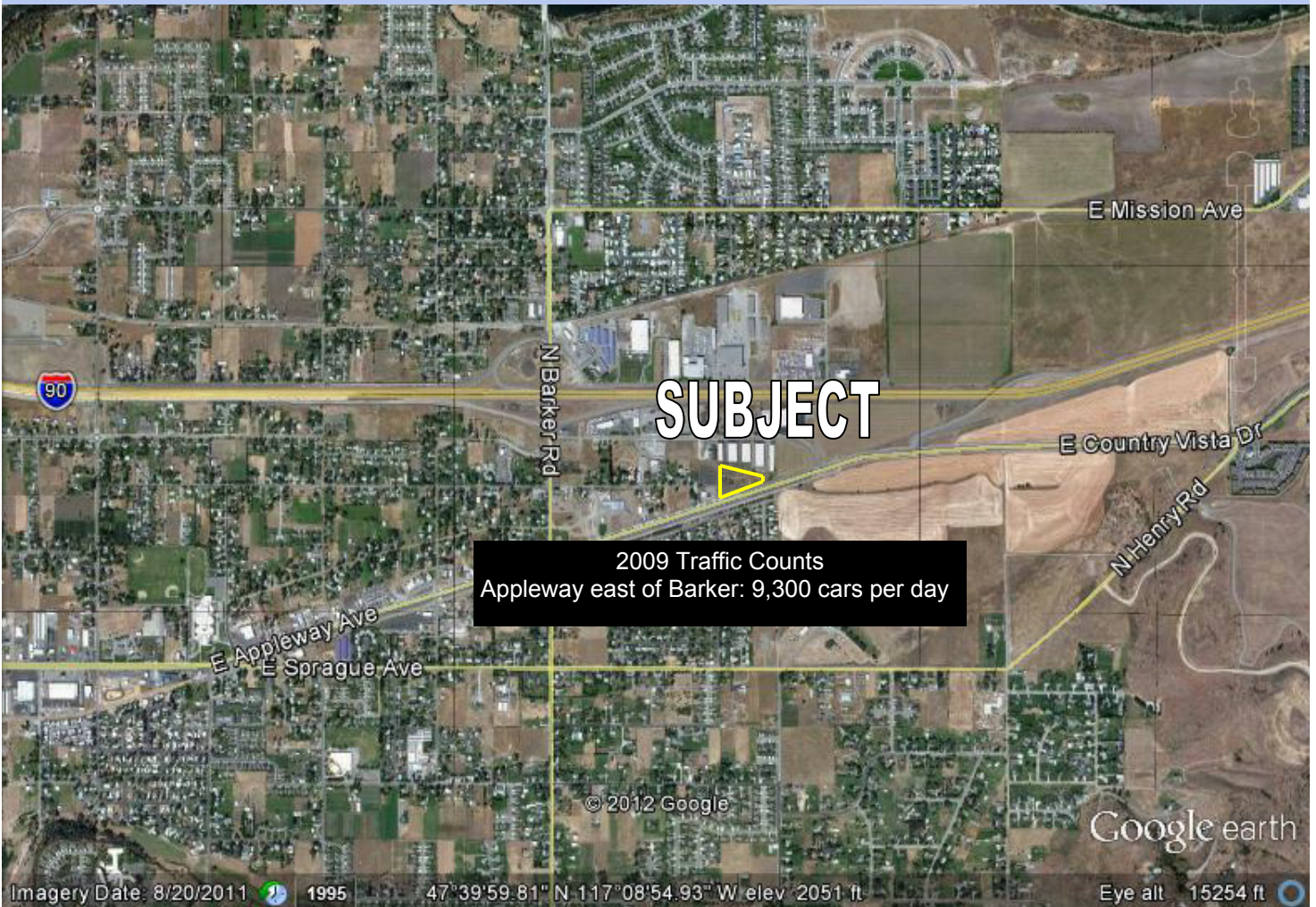
Byrd Real Estate Group L.L.C.
PRODUCING PROPERTY SOLUTIONS

1912 N. Division St., Suite 201
Spokane WA 99207

CBA COMMERCIAL BROKERS
ASSOCIATION



DEVELOPMENT LAND 19223 E Appleway, Spokane Valley, WA



For more information:
Dennis Beringer
Byrd Real Estate Group, LLC
509-326-8080
Cell 509-209-1748
Dennis@byrdrealestaegroup.com



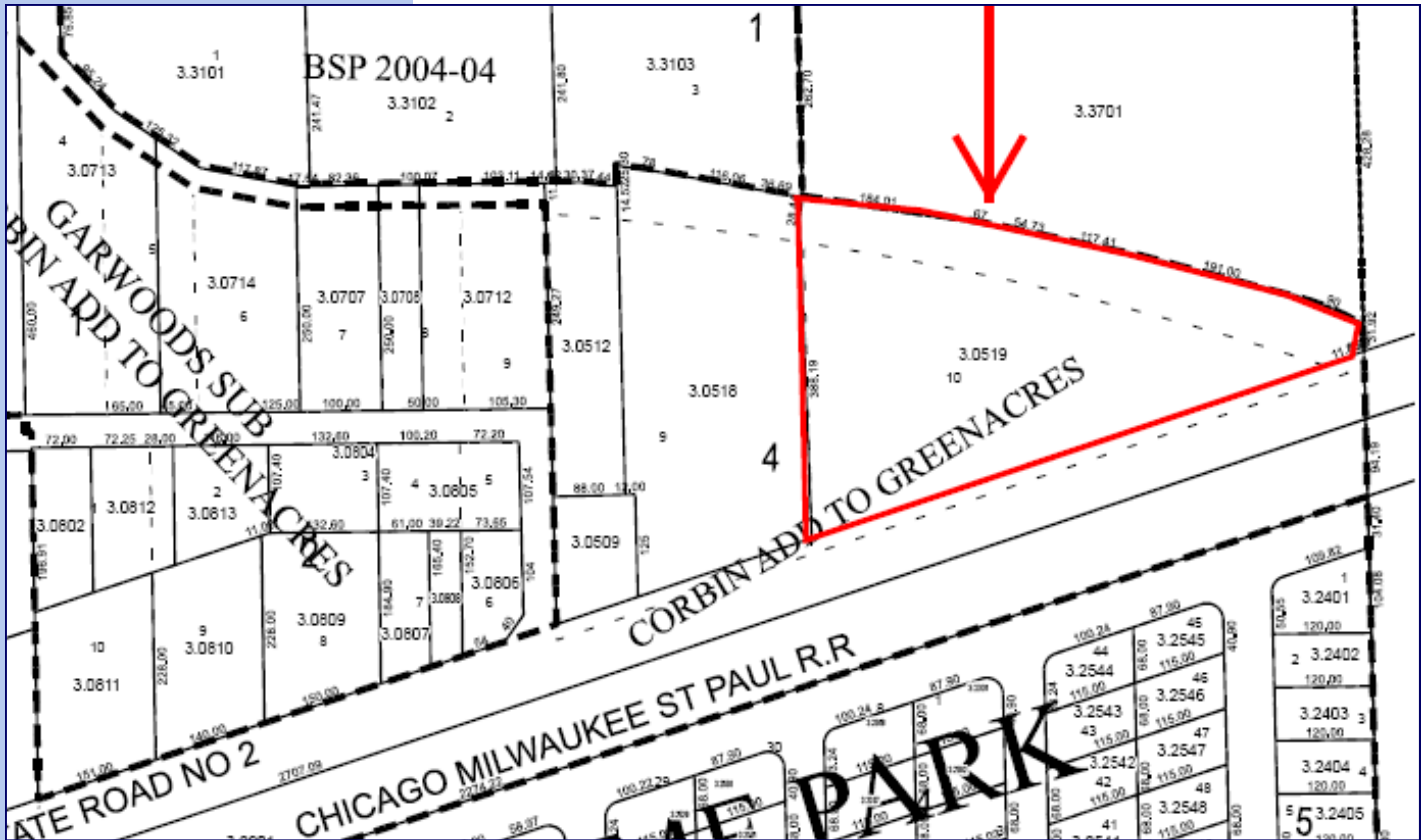
Byrd Real Estate Group L.L.C.

PRODUCING PROPERTY SOLUTIONS
1912 N. Division St., Suite 201
Spokane WA 99207



DEVELOPMENT LAND

19223 E Appleway, Spokane Valley, WA



For more information:
Dennis Beringer
 Byrd Real Estate Group, LLC
 509-326-8080
 Cell 509-209-1748
 Dennis@byrdrealestategroup.com



Byrd Real Estate Group L.L.C.
 PRODUCING PROPERTY SOLUTIONS
 1912 N. Division St., Suite 201
 Spokane WA 99207



All information is furnished by the Owner &/or Broker and believed to be complete and correct. The Owner &/or Broker, however, cannot be responsible for changes, errors, omissions or withdrawals of this offering. The above information is from sources deemed reliable but should be verified by parties that could be adversely affected by any statements or information. This is not an offering of sub-agency, with commission splits to be determined.