

FULL FLOOR AVAILABLE!

2ND FLOOR OFFICE SPACE FOR LEASE

710 WEST MAIN STREET

Louisville, KY



PROPERTY FEATURES

- + 3,780-11,041 ± SF available on 2nd floor
- + Historic West Main district location
- + Next door to 21C Museum Hotel and Proof on Main restaurant
- + Exposed brick interior finishes
- + Ideal for law firms, architectural firms, or engineering firms



CONTACT US

DAVID C. SEAY, CCIM

Vice President

+1 502 412 7643

david.seay@cbre.com

www.cbre.com/louisville

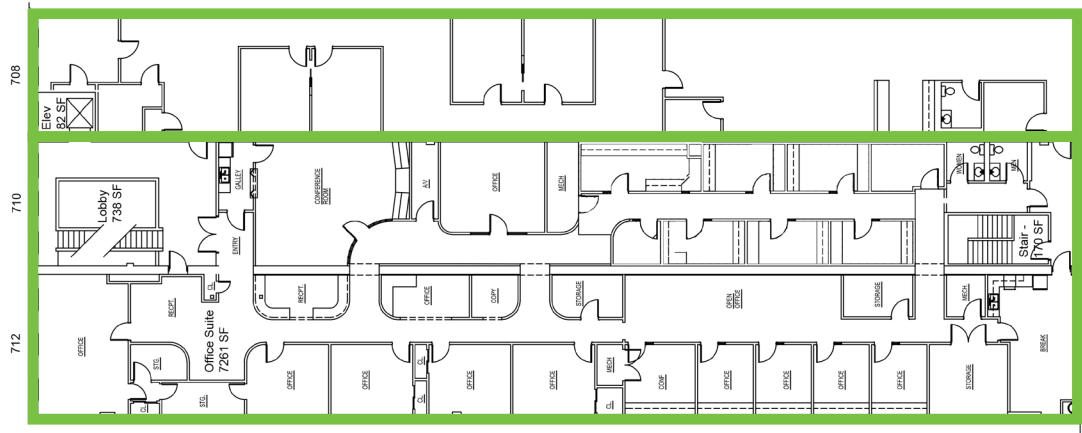
CBRE

FOR LEASE 710 WEST MAIN STREET

FLOOR PLANS

3,780 \pm SF

7,260 \pm SF



PHOTOS - 3,780 \pm SF SPACE



CBRE | 6060 Dutchmans Lane | Suite 100 Louisville, KY 40205 | www.cbre.com

© 2016 CBRE, Inc. This information has been obtained from sources believed reliable. We have not verified it and make no guarantee, warranty or representation about it. Any projections, opinions, assumptions or estimates used are for example only and do not represent the current or future performance of the property. You and your advisors should conduct a careful, independent investigation of the property to determine to your satisfaction the suitability of the property for your needs.

www.cbre.com/louisville

CBRE