

New Creative Office in Heart of Dogpatch

AVAILABLE NOW

2400 3RD STREET

FOR LEASE

Approx. 2,400 SF

San Francisco, California 94107



\$35/SF IG (\$7,000/mo)

- Exposed Ceilings with HVAC Systems
- Glass Conference Room
- 4 Private Offices
- 2 Bathrooms
- Direct Entrance on 3rd Street
- Kitchen Area with Sink
- Centralized in Up-and-Coming Dogpatch Neighborhood
- Abundant Restaurants and Amenities Nearby
- 2 Onsite Parking Spaces
(Additional Daily Parking within 1 Block)
- Across from MUNI T-Line
- Walking Distance to CalTrain



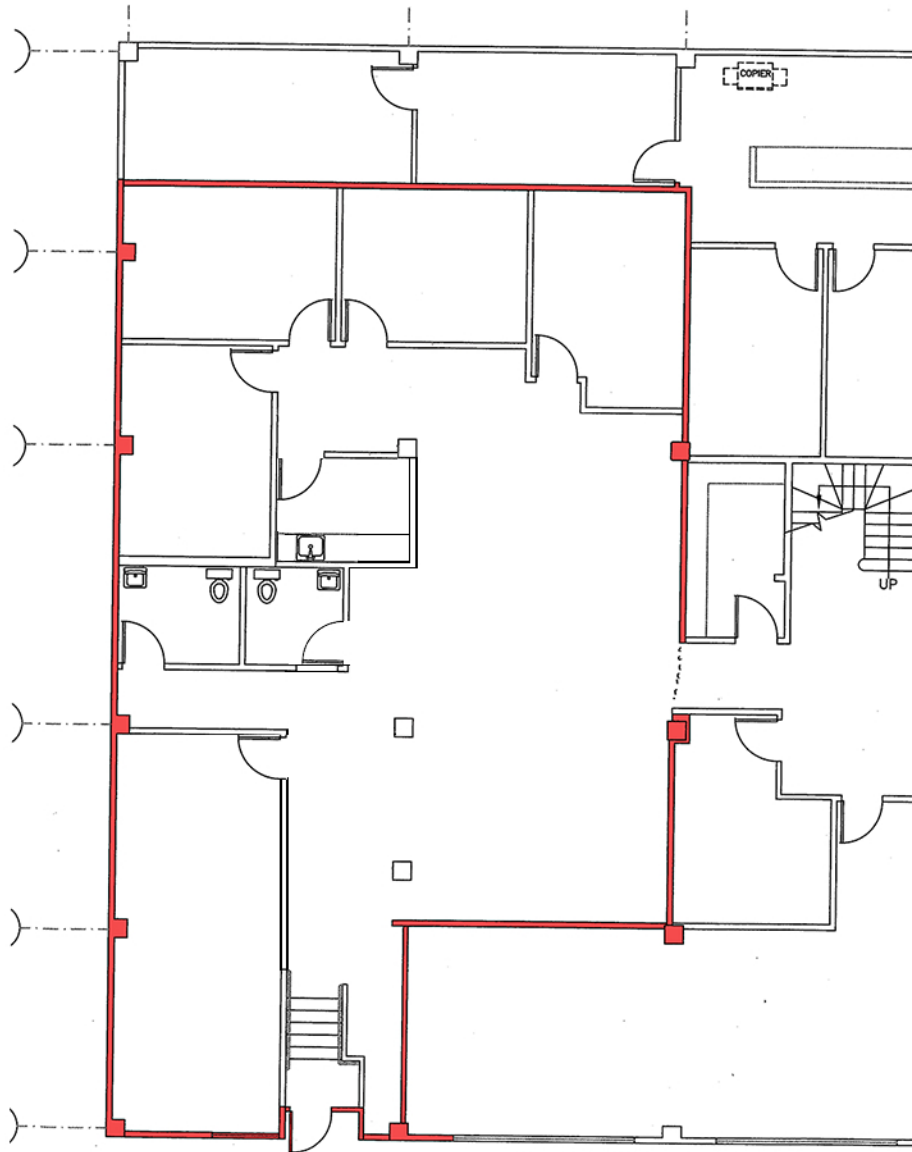
EXCLUSIVE LISTING BROKER:

MARK HUTCHINSON (415) 981-0800
CEO/President mhutchinson@dunhillpartnerswest.com
ETHAN SOMMER (415) 358-2660
Vice President ethan@dpwcre.com

388 Market Street, Suite 1300
San Francisco, California 94111
CA BRE: 01076640
CA BRE: 01925416


DUNHILL PARTNERS WEST
Commercial Real Estate Brokerage & Investments

We have obtained the above information from sources we believe to be reliable, but no representations of any kind, expressed to implied, are being made as to the accuracy of such information. 06/27/19



(Not to scale)

EXCLUSIVE LISTING BROKER:

MARK HUTCHINSON
President/CEO

(415) 981-0800
mhutchinson@dunhillpartnerswest.com

ETHAN SOMMER
Vice President

(415) 358-2660
ethan@dpwcre.com

388 Market Street, Suite 1300
San Francisco, California 94111
CA BRE: 01076640
CA BRE: 01925416



DUNHILL PARTNERS WEST
Commercial Real Estate Brokerage & Investments