

LOWE'S

Publix

N DONNELLY STREET

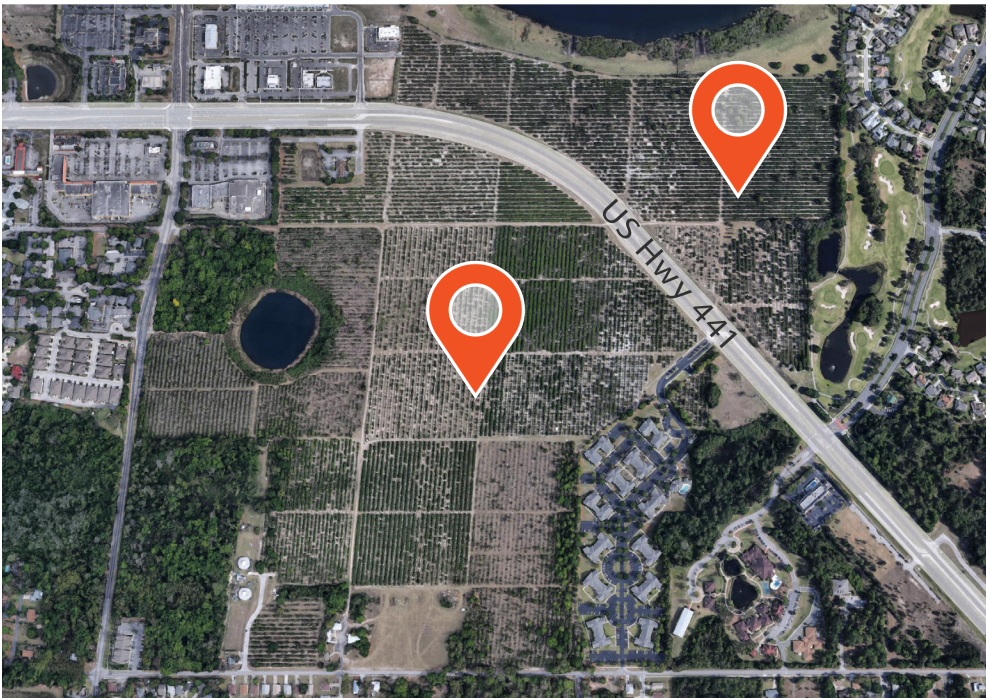
US HWY 441

155 ± ACRES FOR SALE

US HWY 441, MOUNT DORA FL 32757

FOUNDRY
COMMERCIAL

PROPERTY OVERVIEW



PROPERTY DETAILS

Address	US Hwy 441 Mount Dora FL 32757
Total Acres	155 ± acres
Zoning	Proposed Planned Development
Municipality	Lake County / City of Mt. Dora
Utilities	City of Mt. Dora

PROPERTY HIGHLIGHTS

- Pricing: Call for details
- ± 155 Acres Available
- Zoning , Proposed PD via City of Mt. Dora
- US 441 37,500 VPD

DEMOGRAPHICS

2019	1 MILE	3 MILES	5 MILES
2019 EST. POP	4,207	35,592	59,150
2019 EST. HH	1,898	15,340	25,609
2019 AVG HH INCOME	\$103,097	\$77,978	\$74,280

LOCATION MAP



US HWY 441
MOUNT DORA FL 32757

ANDY HAWKINS
ANDY.HAWKINS@FOUNDRYCOMMERCIAL.COM
407.540.7749

BRETT HARTUNG
BRETT.HARTUNG@FOUNDRYCOMMERCIAL.COM
407.540.7897

FOUNDRY
COMMERCIAL

foundrycommercial.com

