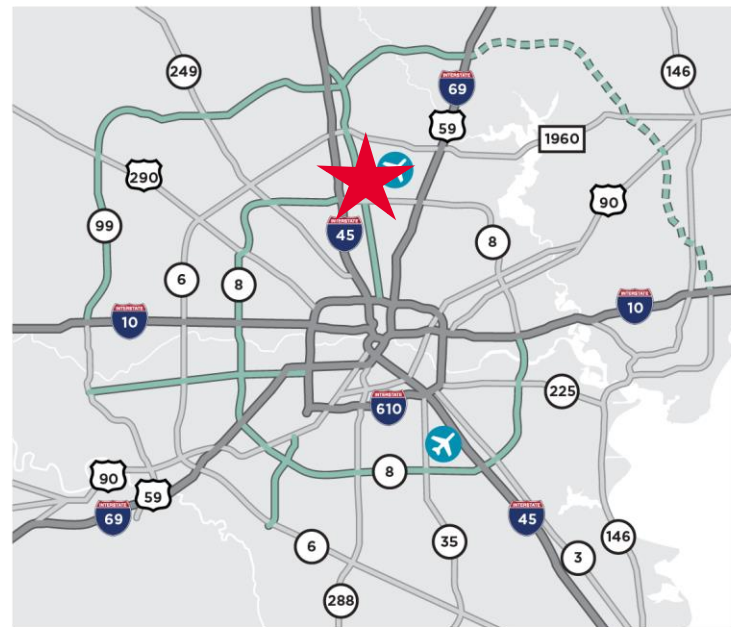


**NEW CONSTRUCTION – PHASE I DELIVERING Q4 2019**



We are pleased to announce the coming of Fairway North Logistics Park, the most accessible new industrial park in the North market with quick access to the Hardy Toll Road N and S, Beltway 8 E and W, and I-45 N and S via Rankin Rd. or Beltway 8. Logistics and delivery routes are unmatched.

- 718,080 SF New Construction
- Phase I Delivering November 2019
  - Building 2: 392,480 SF – Cross Dock with trailer parking
  - Building 3: 235,600 SF – Cross Dock with trailer parking
- Phase II
  - Building 1: 90,000 SF – Front Load
- Additional 222 space trailer lot or overflow car parking
- Extremely low MUD rate @ \$0.33/\$100 value
- Harris County, TX

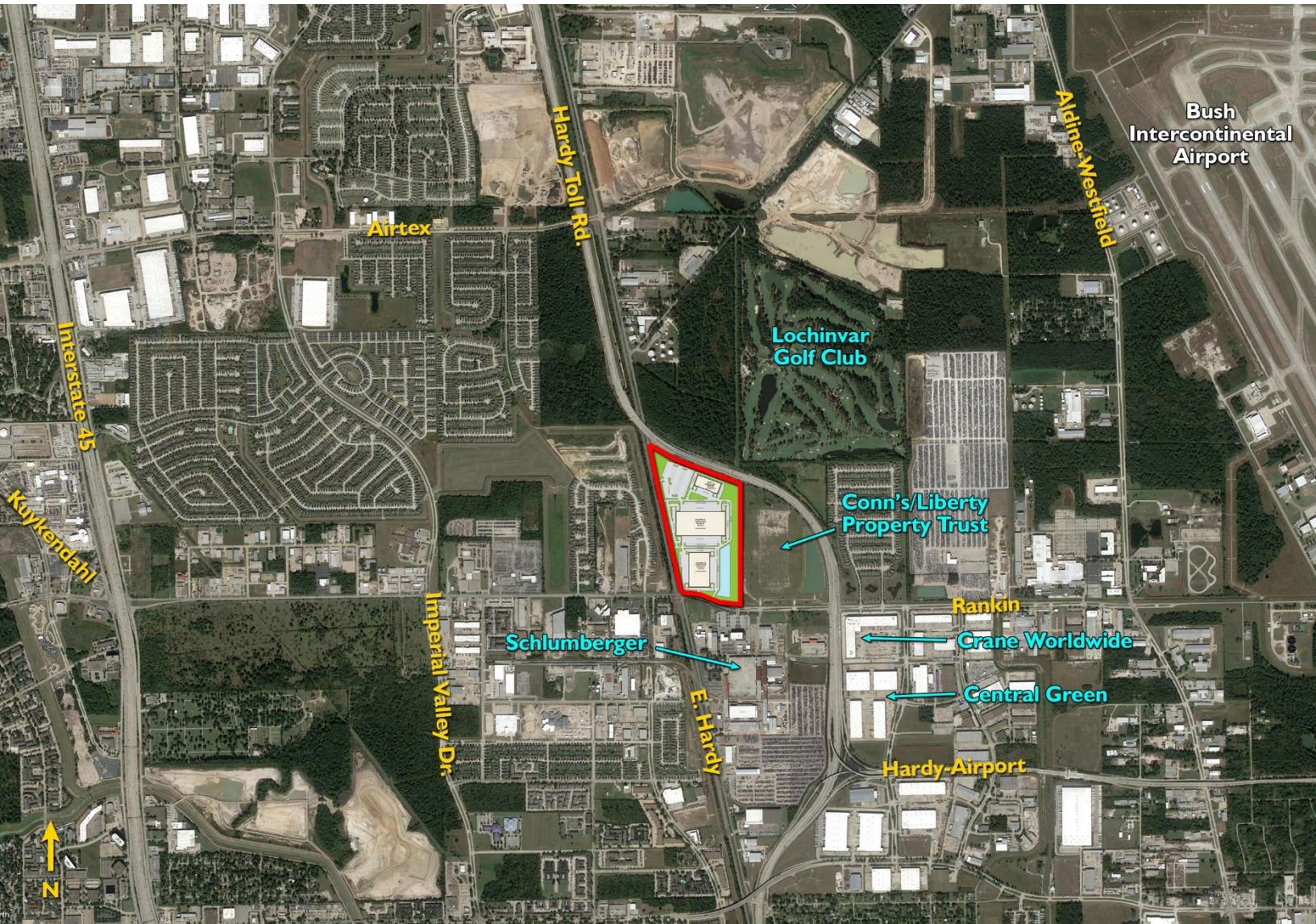


**Jim Foreman**  
713 963 2824  
Jim.foreman@cushwake.com

**Allison Bergmann**  
713 963 2865  
Allison.bergmann@cushwake.com

Cushman & Wakefield  
1330 Post Oak Blvd., Ste 2700  
Houston, TX 77056  
713 877 1700





**Jim Foreman**  
713 963 2824  
Jim.foreman@cushwake.com

**Allison Bergmann**  
713 963 2865  
Allison.bergmann@cushwake.com

Cushman & Wakefield  
1330 Post Oak Blvd., Ste 2700  
Houston, TX 77056  
713 877 1700



### Building 1

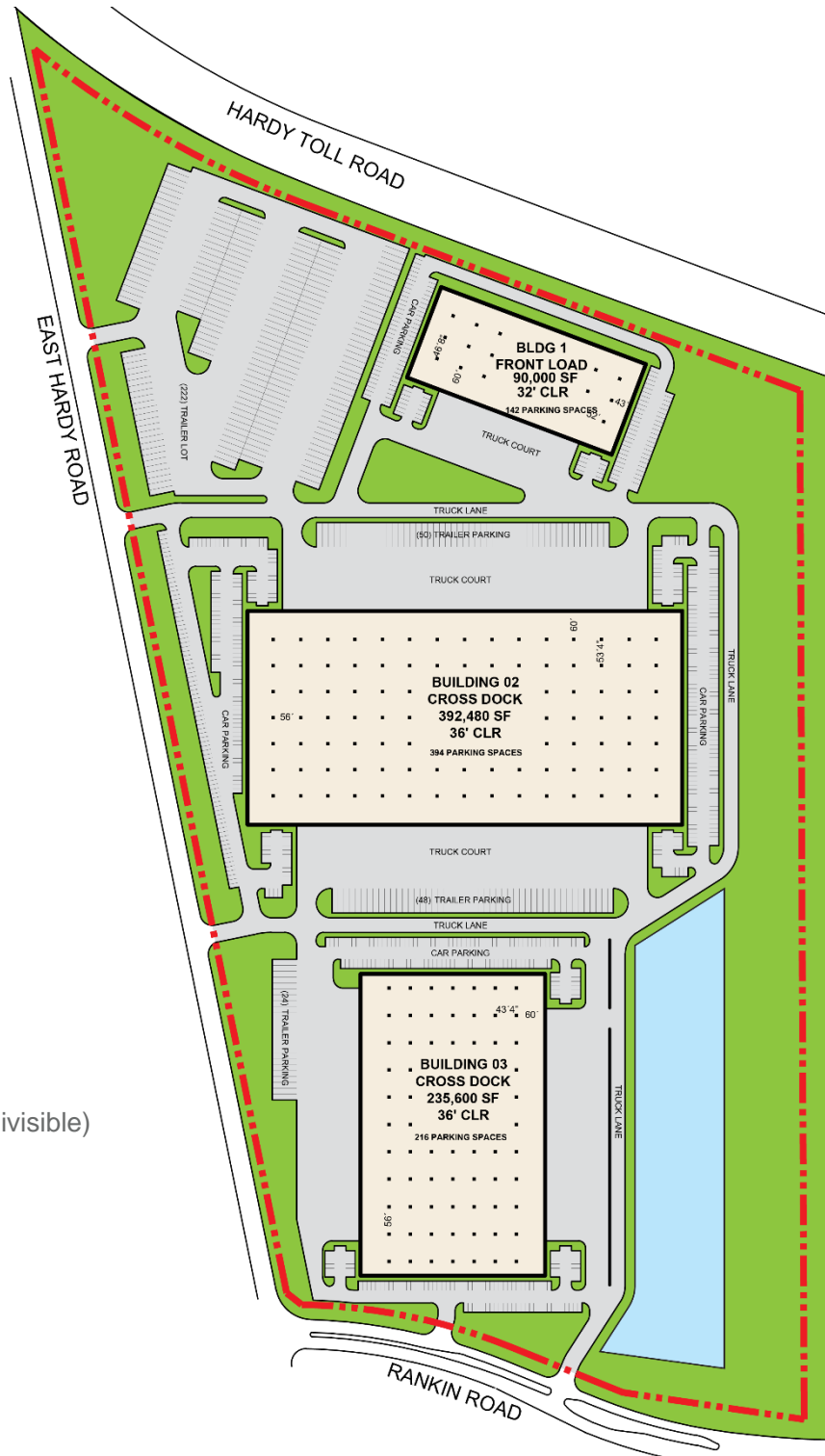
- Front Load
- 90,000 SF available (divisible)
- 32' clear height
- 60' speed bays
- 180' truck court
- 142 parking spaces

### Building 2

- Cross Dock
- 392,480 SF available (divisible)
- 36' clear height
- 60' speed bays
- 180' truck court
- 98 trailer parks
- 394 parking spaces

### Building 3

- Cross Dock
- 235,600 SF available (divisible)
- 36' clear height
- 60' speed bays
- 130' truck court
- 24 trailer parks
- 216 parking spaces



**Jim Foreman**  
 713 963 2824  
 Jim.foreman@cushwake.com

**Allison Bergmann**  
 713 963 2865  
 Allison.bergmann@cushwake.com

Cushman & Wakefield  
 1330 Post Oak Blvd., Ste 2700  
 Houston, TX 77056  
 713 877 1700