



107 Harban Court

Columbia, South Carolina

For more Information:

Bobby Hathaway

+1 803 744 9827

bhathaway@naicolumbia.com

For Sale

±6.87 AC
Commercial Land

Executive Summary

107 Harban Court - Columbia, South Carolina 29212

LOCATION DESCRIPTION: ±6.87 acre site with access via St. Andrews Road and visibility along Harbison Boulevard, across from Irmo High School. The property runs adjacent to Extra Space Storage and Ethan Allen on St. Andrews Road, across from Ashley Home Furniture & Kohl's on Harbison Boulevard. Located within one of Columbia's most well traveled retail corridors, approximately ±1.3 miles from Columbiana Centre.

AVAILABILITY: ±6.87 Acres
Site is ready to permit

2017 TRAFFIC COUNTS: 18,400 VPD (Station 797) St. Andrews Road
17,700 VPD (Station 750) Harbison Boulevard

PROPERTY DESCRIPTION: Last remaining parcel on Harbison Boulevard, boasting excellent visibility and frontage from both Harbison Boulevard and St. Andrews Road. Ideal location makes site permissible for retail, residential, or office use.

2018 DEMOGRAPHICS:	<u>1 Mile</u>	<u>3 Miles</u>	<u>5 Miles</u>
Population:	5,788	46,139	103,916
Households:	2,353	19,069	40,373
Average Household Income:	\$81,655	\$81,156	\$81,669

ZONING: CG (Commercial General)
Town of Irmo

SALES PRICE: \$1,695,000

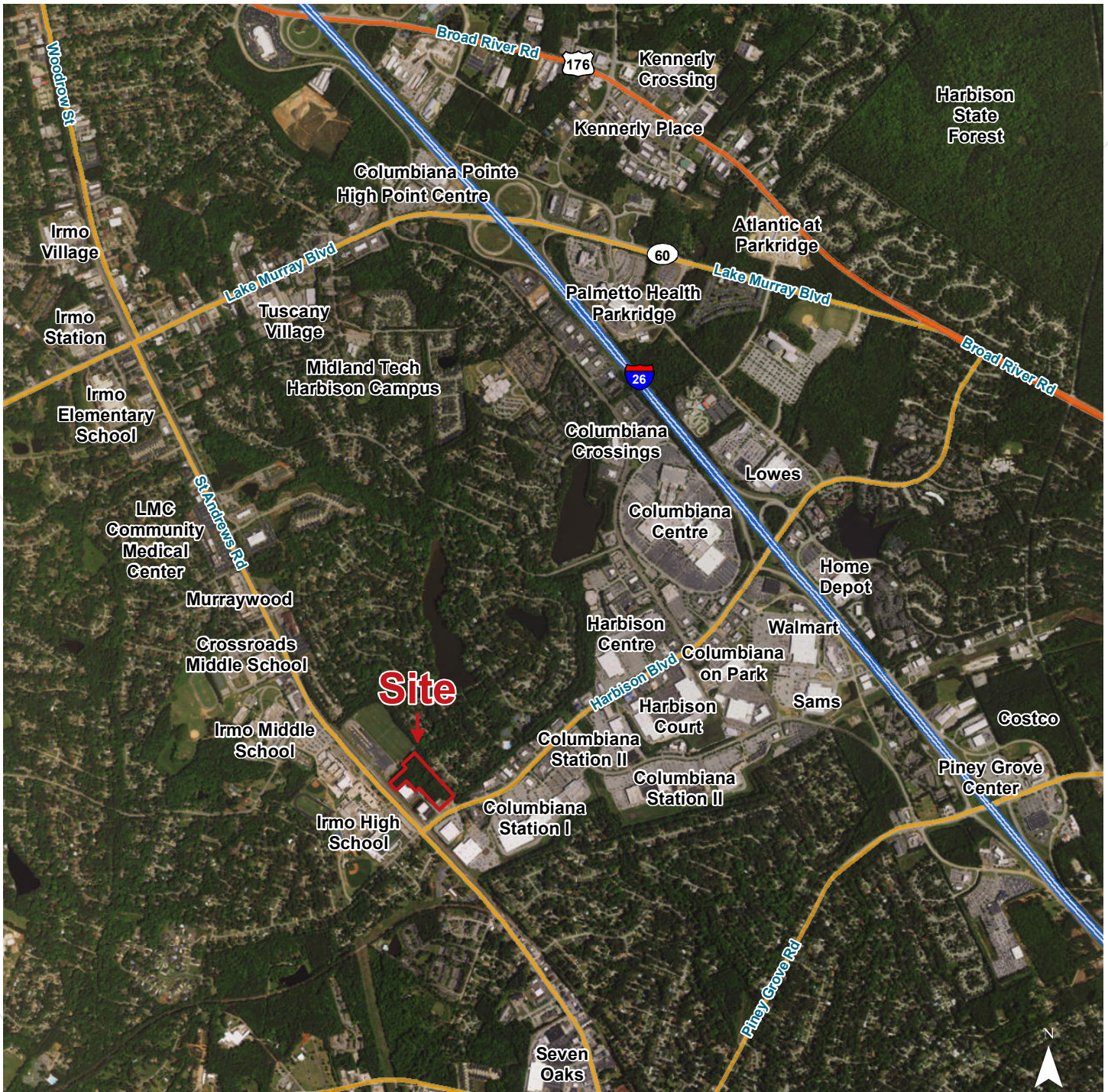
For Sale

±6.87 AC

Commercial Land

Points of Interest

107 Harban Court - Columbia, South Carolina 29212



For Sale

±6.87 AC
Commercial Land

Site Dimensions

107 Harban Court - Columbia, South Carolina 29212



For Sale

±6.87 AC
Commercial Land

Conceptual Site Plan

107 Harban Court - Columbia, South Carolina 29212



For Sale

±6.87 AC
Commercial Land

Conceptual Site Plan

107 Harban Court - Columbia, South Carolina 29212

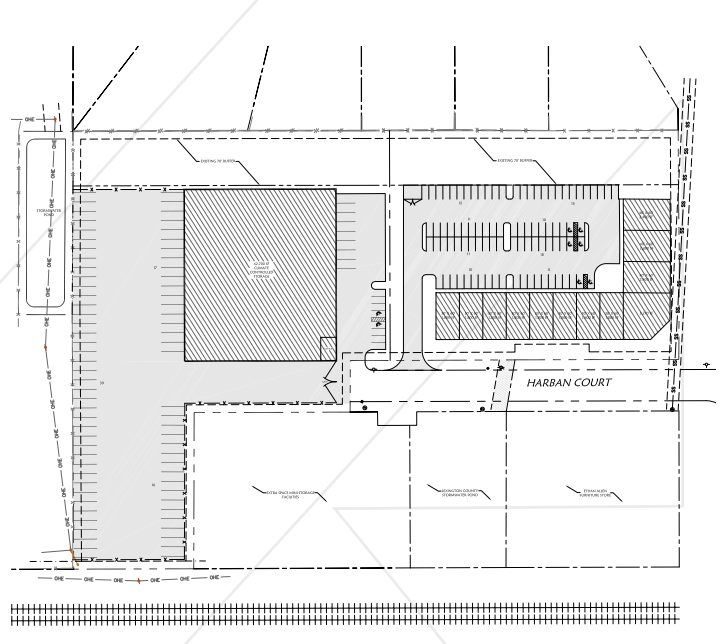
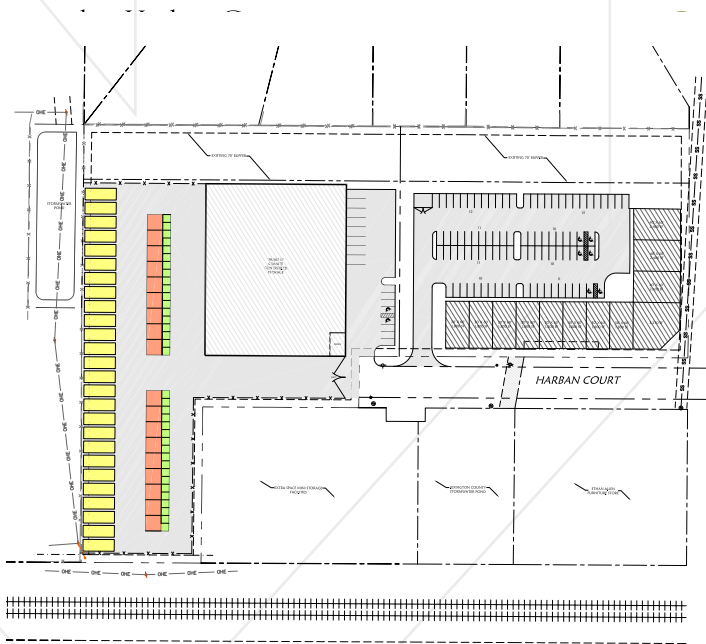
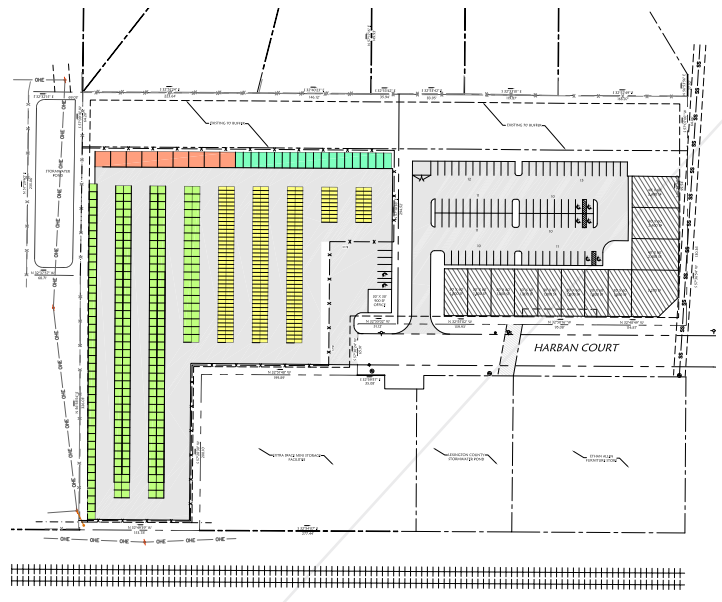
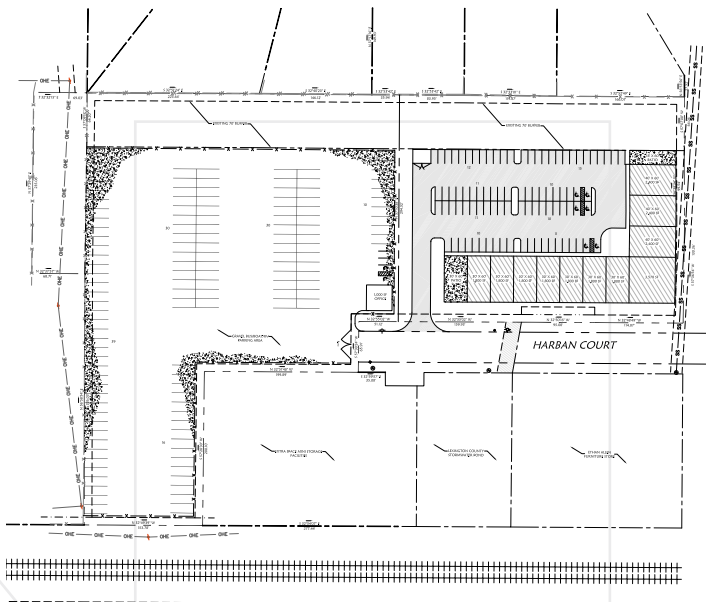


For Sale

±6.87 AC
Commercial Land

Conceptual Site Plan Options

107 Harban Court - Columbia, South Carolina 29212



Contact Bobby Hathaway to request larger versions of Conceptual Site Plans

Demographic Profile

Harbison Boulevard & St. Andrews Road - Columbia, South Carolina

	1 Mile	3 Miles	5 Miles		1 Mile	3 Miles	5 Miles
Population				Median Household Income			
2010 Census	5,522	42,935	96,206	2018 Estimate	\$62,388	\$63,459	\$61,285
2018 Estimate	5,788	46,139	103,916	2023 Projection	\$67,077	\$70,109	\$68,079
2023 Projection	6,015	48,407	109,529	Average Household Income			
% Chg. 2018-2023	3.9%	4.9%	5.4%	2018 Estimate	\$81,655	\$81,156	\$81,669
Households				2023 Projection	\$89,547	\$90,086	\$91,177
2010 Census	2,251	17,768	37,274	Per Capita Household Income			
2018 Estimate	2,353	19,069	40,373	2018 Estimate	\$34,059	\$33,737	\$31,937
2023 Projection	2,440	19,992	42,609	2023 Projection	\$37,262	\$37,405	\$35,648
Families				2018 Household Income Dist.			
2010 Census	1,545	11,723	24,257	Less than \$15,000	5.8%	6.9%	8.0%
2018 Estimate	1,584	12,295	25,779	\$15,000 - \$24,999	7.2%	6.8%	7.4%
2023 Projection	1,631	12,779	27,026	\$25,000 - \$34,999	6.3%	8.0%	8.6%
2018 Age Dist.				\$35,000 - \$49,999	15.4%	15.2%	15.0%
0 - 4	5.5%	5.7%	5.8%	\$50,000 - \$74,999	25.2%	20.7%	20.0%
5 - 9	5.4%	5.8%	5.8%	\$75,000 - \$99,999	13.6%	15.7%	14.1%
10 - 14	5.6%	5.9%	6.0%	\$100,000 - \$149,999	16.4%	16.9%	16.5%
15 - 19	5.0%	5.5%	6.1%	\$150,000 - \$199,999	6.1%	5.7%	5.4%
20 - 24	5.3%	6.0%	6.8%	\$200,000 and Up	4.0%	4.2%	5.0%
25 - 34	13.0%	14.3%	15.8%	2018 Dist. by Race & Ethnicity			
35 - 44	11.5%	12.9%	13.9%	White Alone	69.4%	62.5%	58.7%
45 - 54	13.0%	12.5%	13.1%	Black Alone	22.7%	29.4%	33.7%
55 - 64	15.7%	14.1%	12.7%	American Indian Alone	0.4%	0.3%	0.3%
65 - 74	13.4%	11.1%	9.0%	Asian Alone	3.5%	3.5%	3.3%
75 - 84	5.1%	4.6%	3.7%	Pacific Islander Alone	0.1%	0.2%	0.2%
85+	1.6%	1.6%	1.4%	Some Other Race Alone	0.9%	1.2%	1.3%
Median Age				Two or More Races	3.0%	2.9%	2.6%
2010 Census	41.9	38.6	36.1	Hispanic Origin (Any Race)	3.4%	3.8%	3.8%
2018 Estimate	43.9	40.0	37.6	2018 Housing Data			
2023 Projection	44.4	40.8	38.6	Owner Occ. Housing Units	1,804	12,892	26,317
Average Household Size				Renter Occ. Housing Units	548	6,177	14,056
2010 Census	2.45	2.41	2.41	2018 Business Data			
2018 Estimate	2.46	2.41	2.42	Total Businesses:	483	1,965	3,797
2023 Projection	2.46	2.41	2.42	Total Employees:	6,720	24,731	53,050