

---

## 4.1 ACRES PRIME DEVELOPMENT LAND

730 Keezletown Road, Harrisonburg, VA 22801

---

### Executive Summary



### OFFERING SUMMARY

Sale Price: \$405,900

Lot Size: 4.1 Acres

Zoning: R-1

Utilities: Public Water Available  
Public Sewer Available

Access: Shared Entrance



### PROPERTY OVERVIEW

Prime development property. Ideal for residential, multifamily development. R2 or R6 zoning possible. Public water and sewer available. Road frontage is 175' +/- . Dwelling on property being sold as-is. Removal of dwelling at purchasers expense. Neighboring parcel at 650 Keezletown Road, approved for 24 homes development. Developers of neighboring parcel will be installing a VDOT approved shared entrance for both parcels.

For More Information:

Butch Strawderman  
540.246.5959  
butch.strawderman@cottonwood.com

Logan Zysk  
215.740.6416  
logan.zysk@cottonwood.com

**COTTONWOOD**  
COMMERCIAL  
A COMMERCIAL REAL ESTATE BROKERAGE



---

## 4.1 ACRES PRIME DEVELOPMENT LAND

730 Keezletown Road, Harrisonburg, VA 22801

---

### Additional Photos



For More Information:

Butch Strawderman

540.246.5959

[butch.strawderman@cottonwood.com](mailto:butch.strawderman@cottonwood.com)

Logan Zysk

215.740.6416

[logan.zysk@cottonwood.com](mailto:logan.zysk@cottonwood.com)

**COTTONWOOD**  
**COMMERCIAL**  
A COMMERCIAL REAL ESTATE BROKERAGE



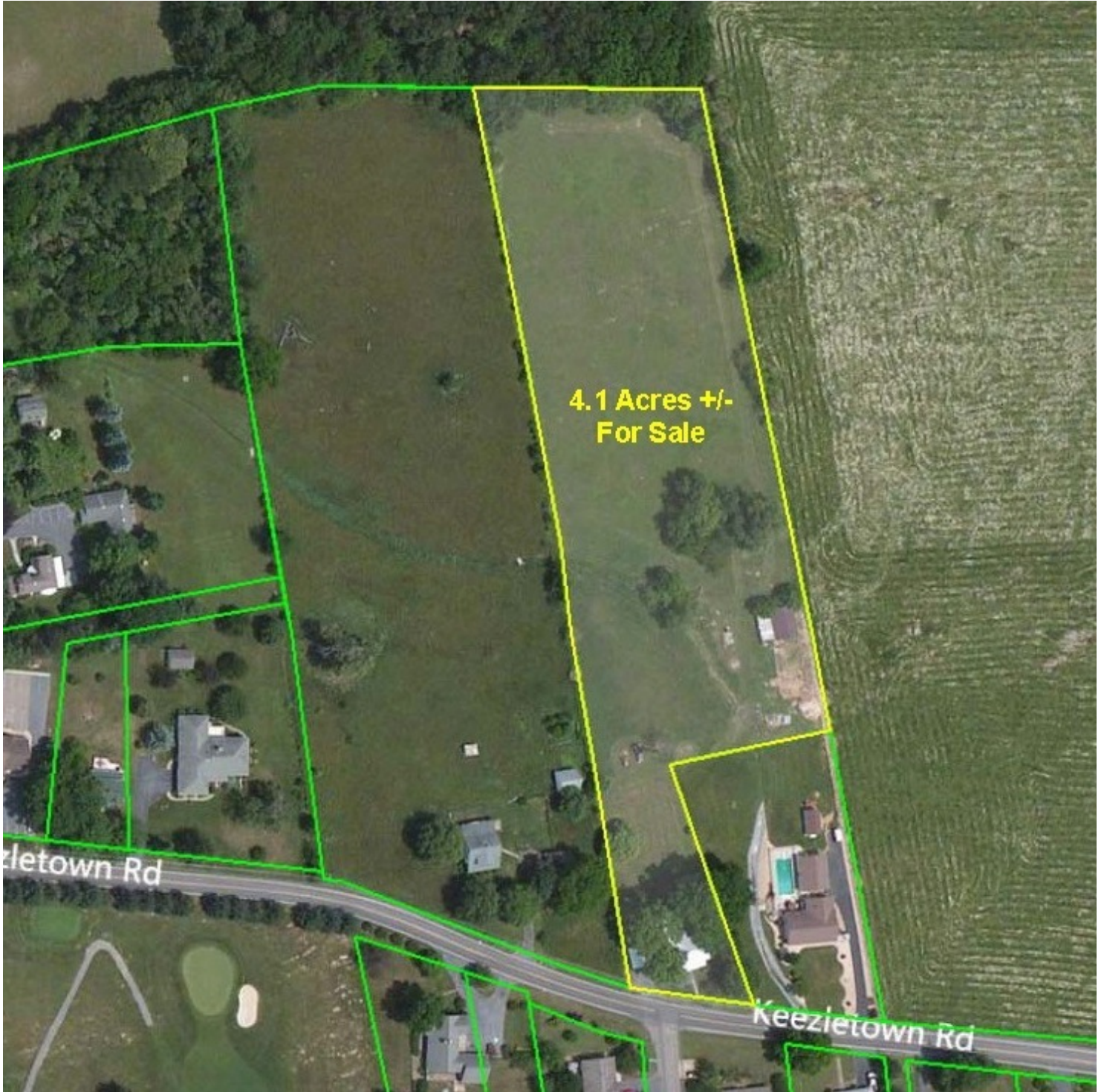
---

## 4.1 ACRES PRIME DEVELOPMENT LAND

730 Keezletown Road, Harrisonburg, VA 22801

---

### GIS Outline



For More Information:

Butch Strawderman

540.246.5959

[butch.strawderman@cottonwood.com](mailto:butch.strawderman@cottonwood.com)

Logan Zysk

215.740.6416

[logan.zysk@cottonwood.com](mailto:logan.zysk@cottonwood.com)

**COTTONWOOD**  
**COMMERCIAL**  
A COMMERCIAL REAL ESTATE BROKERAGE



---

## 4.1 ACRES PRIME DEVELOPMENT LAND

730 Keezletown Road, Harrisonburg, VA 22801

---

### Location Maps



For More Information:

Butch Strawderman

540.246.5959

[butch.strawderman@cottonwood.com](mailto:butch.strawderman@cottonwood.com)

Logan Zysk

215.740.6416

[logan.zysk@cottonwood.com](mailto:logan.zysk@cottonwood.com)

**COTTONWOOD**  
**COMMERCIAL**  
A COMMERCIAL REAL ESTATE BROKERAGE