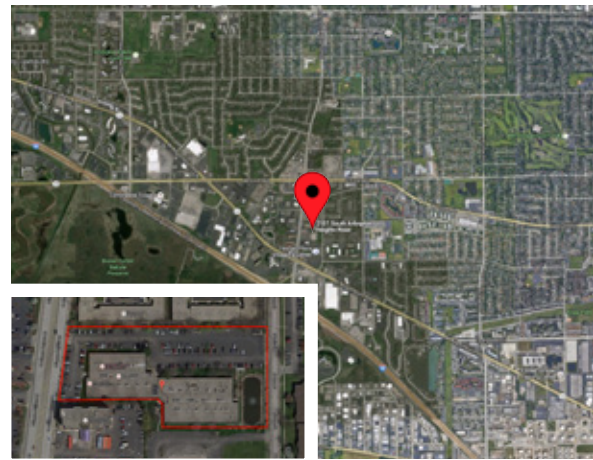


# FOR LEASE MEDICAL /EXECUTIVE OFFICES

Arlington Green Offices 2101 S Arlington Heights Rd. Arlington Heights IL



## BUILDING FEATURES

- Medical & executive suites available
- High end Custom Build outs
- Flexible layouts
- Extremely high traffic counts & demographics
- 590- 25,000 sf contiguous Offices
- Adequate parking
- Signage options available
- UPS, Fed Ex & USPS drop boxes

## LOCATION

- Located on Arlington Heights Rd. between Golf Rd and Algonquin Rd
- In the heart of the nw suburban commercial corridor
- ½ mile North of Interstate I90
- 10 minutes from O'Hare International Airport
- 27 Miles from downtown Chicago
- Easy access to all major expressways
- Walking distance to many hotels, shops and restaurants

## JOIN OUR EXISTING TENANTS

- Arlington Smith Dentistry
- Northwest Community Hospital
- Suburban Endocrinology & Diabetes
- Northwest Urology
- Greater Illinois Title
- Innovative Pain Solutions
- Nittsu Realtors

## FOR MORE INFORMATION

Abe Polatsek, Principal  
8200 Christiana Ave,  
Skokie, IL 60076

p. (847) 763-1300  
F. (847) 763-1351  
abe@integrproperties.com



847.763.1300 | [www.integrproperties.com](http://www.integrproperties.com)