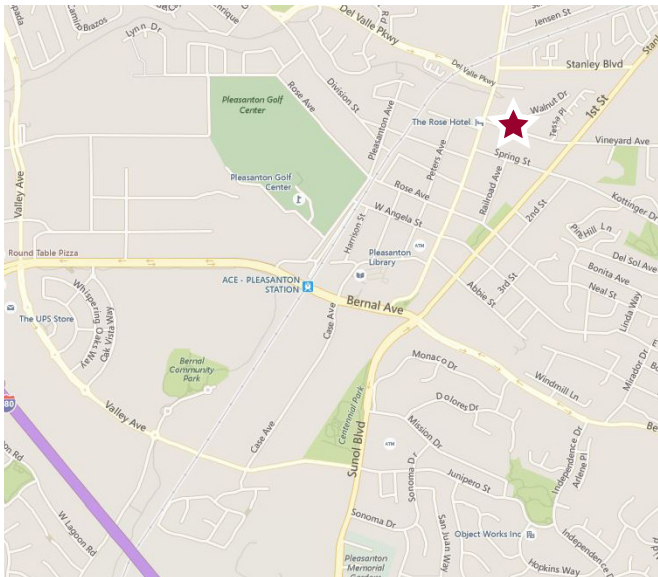


FOR SALE OFFICE CONDOMINIUMS

FOUNTAIN CREEK PLAZA, PLEASANTON



AVAILABLE SPACES & PRICING:

- 1,081±SF - 6,976±SF available for sale
- 303 & 305 Ray Street : 2,540±SF - **asking price: \$1,270,000**
- 307 Ray Street: 1,081±SF - **asking price: \$540,500**
- 309 Ray Street: 1,232±SF - **asking price: \$616,000**
- 311 Ray Street: 2,123±SF - **asking price: \$1,061,500**

LOCATION INFORMATION:

- Prime location in the heart of Historic Downtown Pleasanton
- Multiple spaces available in Fountain Creek Plaza luxury condominiums
- Units can be combined for a larger square footage
- Close to shops, restaurants and other amenities
- Built in 2005 with ample on site parking
- Control and own your space/don't rent
- Enjoy the ambiance

FOR MORE INFORMATION
PLEASE CONTACT:

ARON HOENNINGER
LIC.ID# 01274841
PRINCIPAL
(925) 737-4155
ahoenninger@lee-associates.com

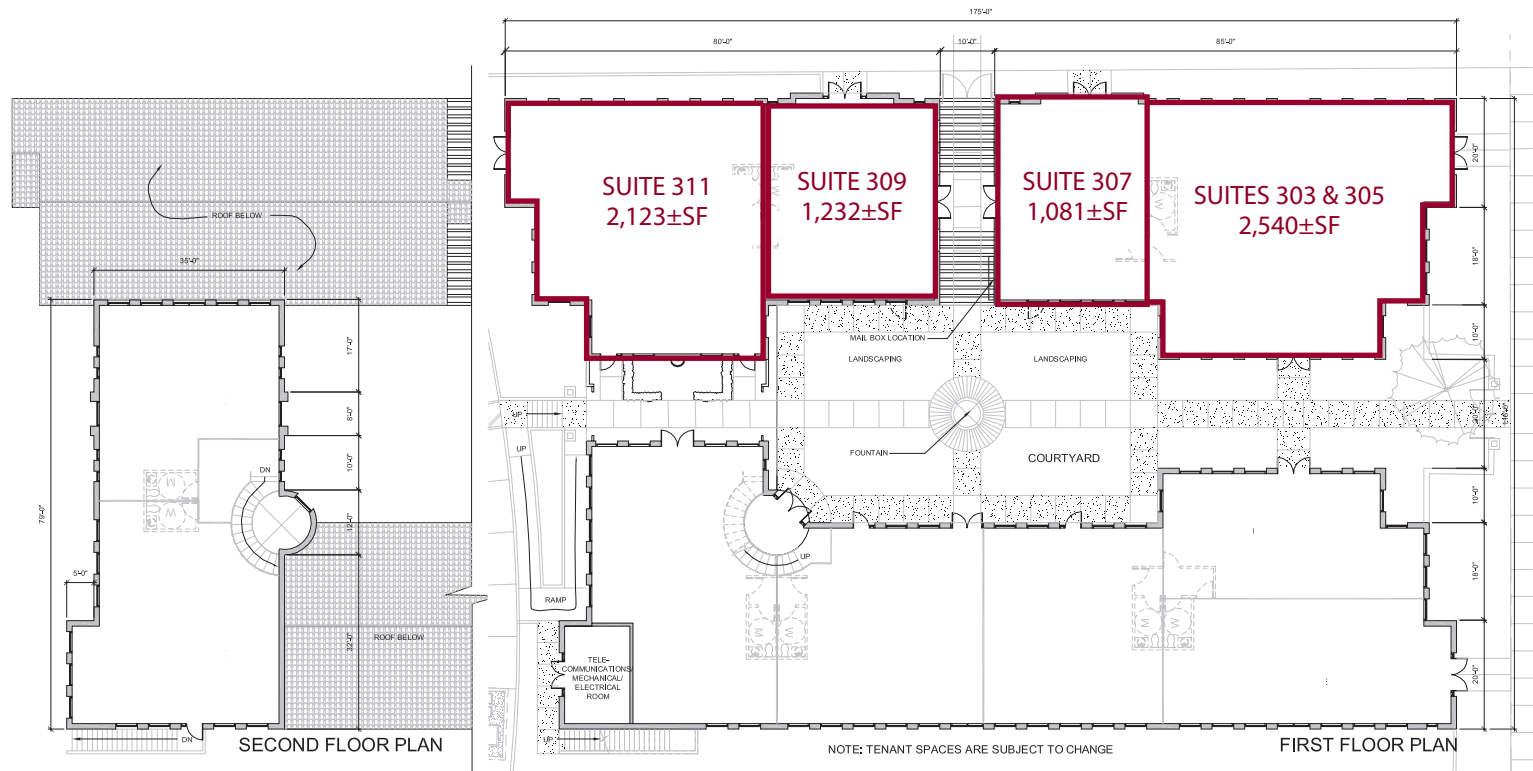
Lee & Associates - East Bay, Inc.
5890 Stoneridge Drive
Suite 210
Pleasanton, California 94588

FOR SALE OFFICE CONDOMINIUMS

FOUNTAIN CREEK PLAZA, PLEASANTON



1,081±SF - 6,976±SF AVAILABLE



FOR MORE INFORMATION
PLEASE CONTACT:

ARON HOENNINGER
LIC.ID# 01274841
PRINCIPAL
(925) 737-4155
ahoenninger@lee-associates.com

Lee & Associates - East Bay, Inc.
5890 Stoneridge Drive
Suite 210
Pleasanton, California 94588