

# FOR LEASE

# PARK PLAZA CENTER

9019 - 9029 PARK PLAZA DRIVE  
LA MESA, CA 91942



## 1,522 SF Professional Office Suite Available

### PROPERTY HIGHLIGHTS

- Well Maintained Professional Office Building
- Monument Signage Available
- Excellent Fletcher Hills Location
- Easy Access to/from Highway 125, 52 & Interstate 8
- Conveniently Located with Easy Access to Restaurants & Shops.
- Near Grossmont Regional Shopping Mall and Sharp Grossmont Hospital
- Monthly Lease Rate From \$1.80/SF - Gross+Electricity



858. 360. 3000 | [caacre.com](http://caacre.com)

**ROC BEAS**  
Sales Associate  
Roc@caacre.com  
DRE Lic # 01985515

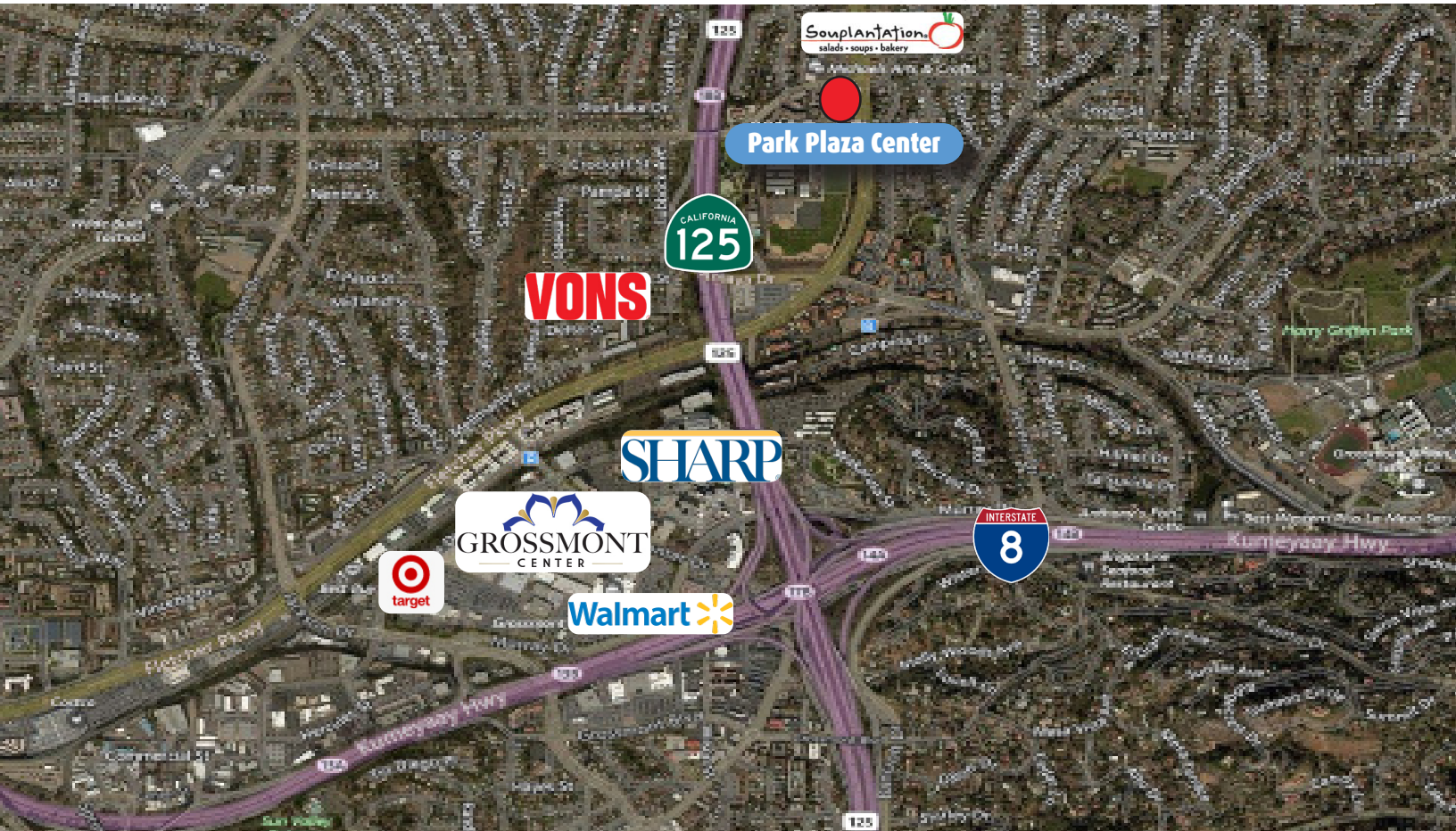
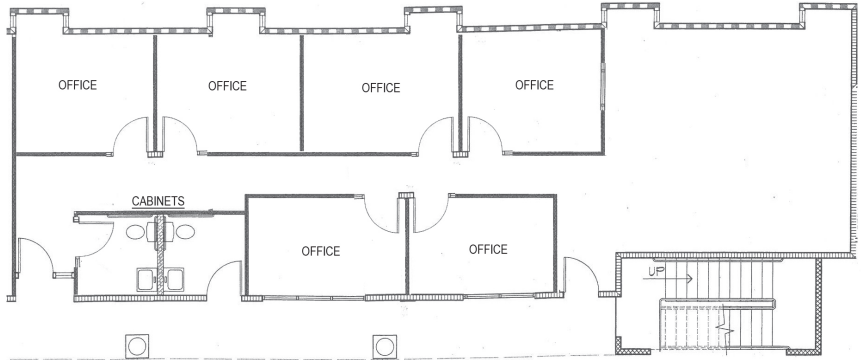
**MIKE CONGER**  
Principal  
Mike@caacre.com  
DRE Lic # 01381193

# FOR LEASE PARK PLAZA CENTER

9019 - 9029 PARK PLAZA DRIVE  
LA MESA, CA 91942



SUITE	RSF	DESCRIPTION
9029		• Six (6) Offices and Private Restroom
104-107	1,522	• Available Now
1st Floor		• Great for Professional Office, Consumer Service, and Many More



858.360.3000 | caacre.com

**ROC BEAS**  
Sales Associate  
Roc@caacre.com  
DRE Lic # 01985515

**MIKE CONGER**  
Principal  
Mike@caacre.com  
DRE Lic # 01381193