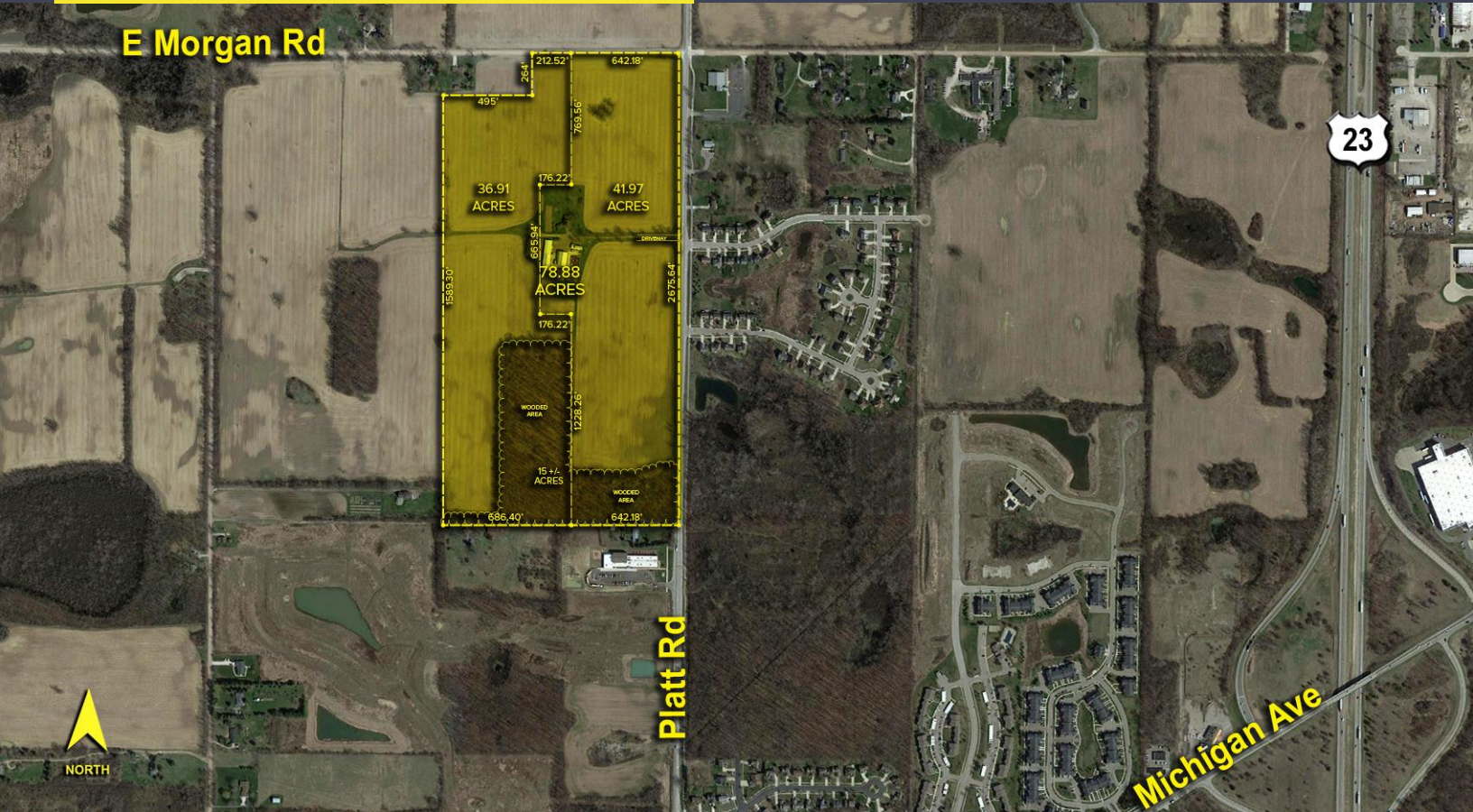


5174 PLATT ROAD  
ANN ARBOR, MICHIGAN

LAND FOR SALE  
78.88 Acres Available



**SIGNATURE  
ASSOCIATES**  
KNOW SIGNATURE | KNOW RESULTS



## PROPERTY FEATURES

- 78.88 acres available - two (2) parcels assemblage of 41.97 acres (L-12-22-100-001) and adjacent 36.91 acres (L12-22-100-002)
- Zoned AG – Agricultural with potential to re-zone to residential
- Property is located in Pittsfield Twp. with an Ann Arbor mailing address
- Ann Arbor School District
- Easy expressway access
- Sale Price: \$5,514,000 (\$69,900/acre)



For more information, please contact:

**JAY CHAVEY**  
(248) 948 4196  
jchavey@signatureassociates.com

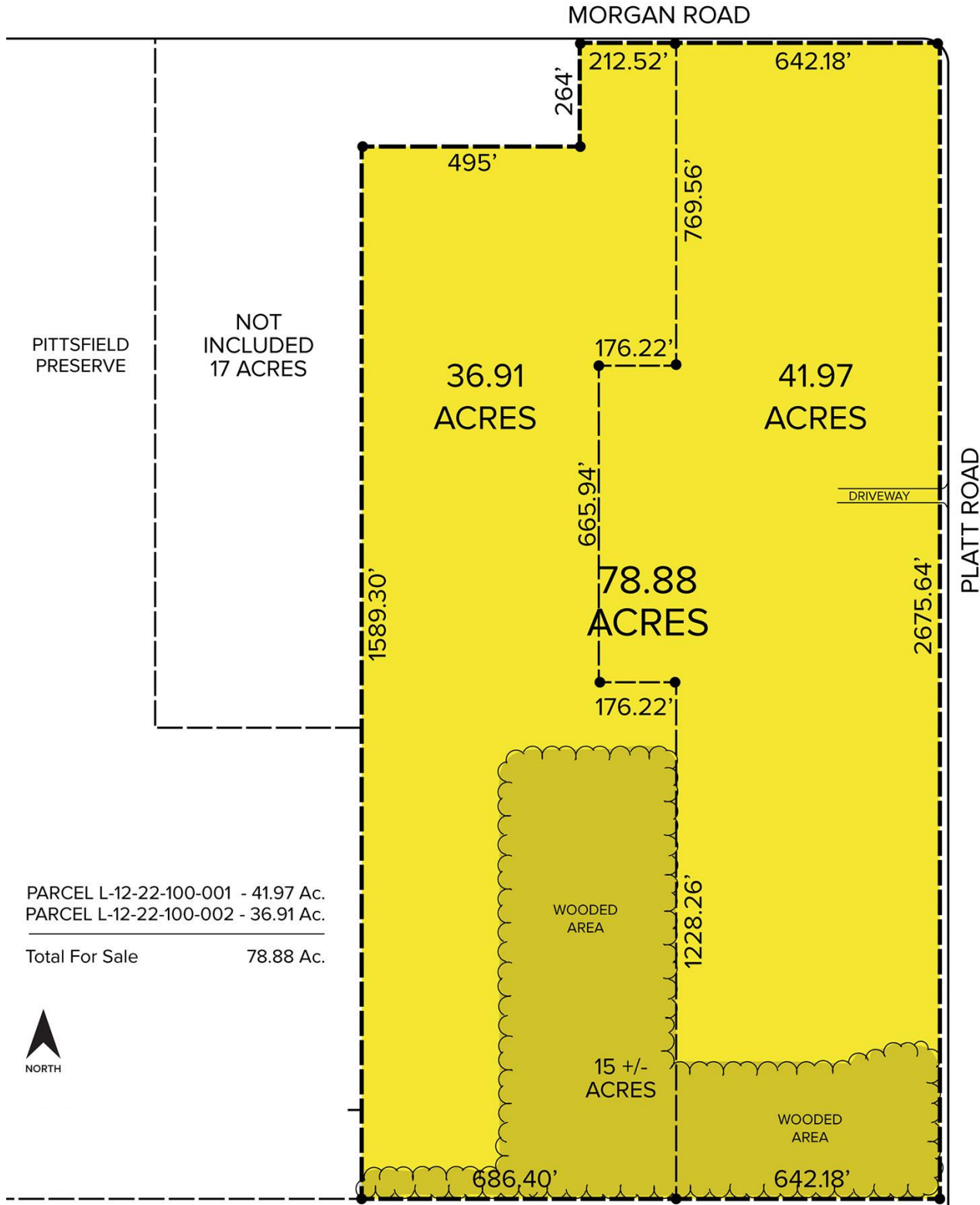
**SIGNATURE ASSOCIATES**  
One Towne Square, Suite 1200  
Southfield, MI 48076  
www.signatureassociates.com

# 5174 Platt Road – Ann Arbor, Michigan

## Land For Sale

78.88  
Acres  
AVAILABLE

### Site Plan



For more information, please contact:

**JAY CHAVEY**  
(248) 948 4196  
jchavey@signatureassociates.com

**SIGNATURE ASSOCIATES**  
One Towne Square, Suite 1200  
Southfield, MI 48076  
www.signatureassociates.com

# 5174 Platt Road – Ann Arbor, Michigan

## Land For Sale

78.88  
Acres  
AVAILABLE

Aerial



For more information, please contact:

**JAY CHAVEY**

(248) 948 4196

[jchavey@signatureassociates.com](mailto:jchavey@signatureassociates.com)

**SIGNATURE ASSOCIATES**

One Towne Square, Suite 1200

Southfield, MI 48076

[www.signatureassociates.com](http://www.signatureassociates.com)

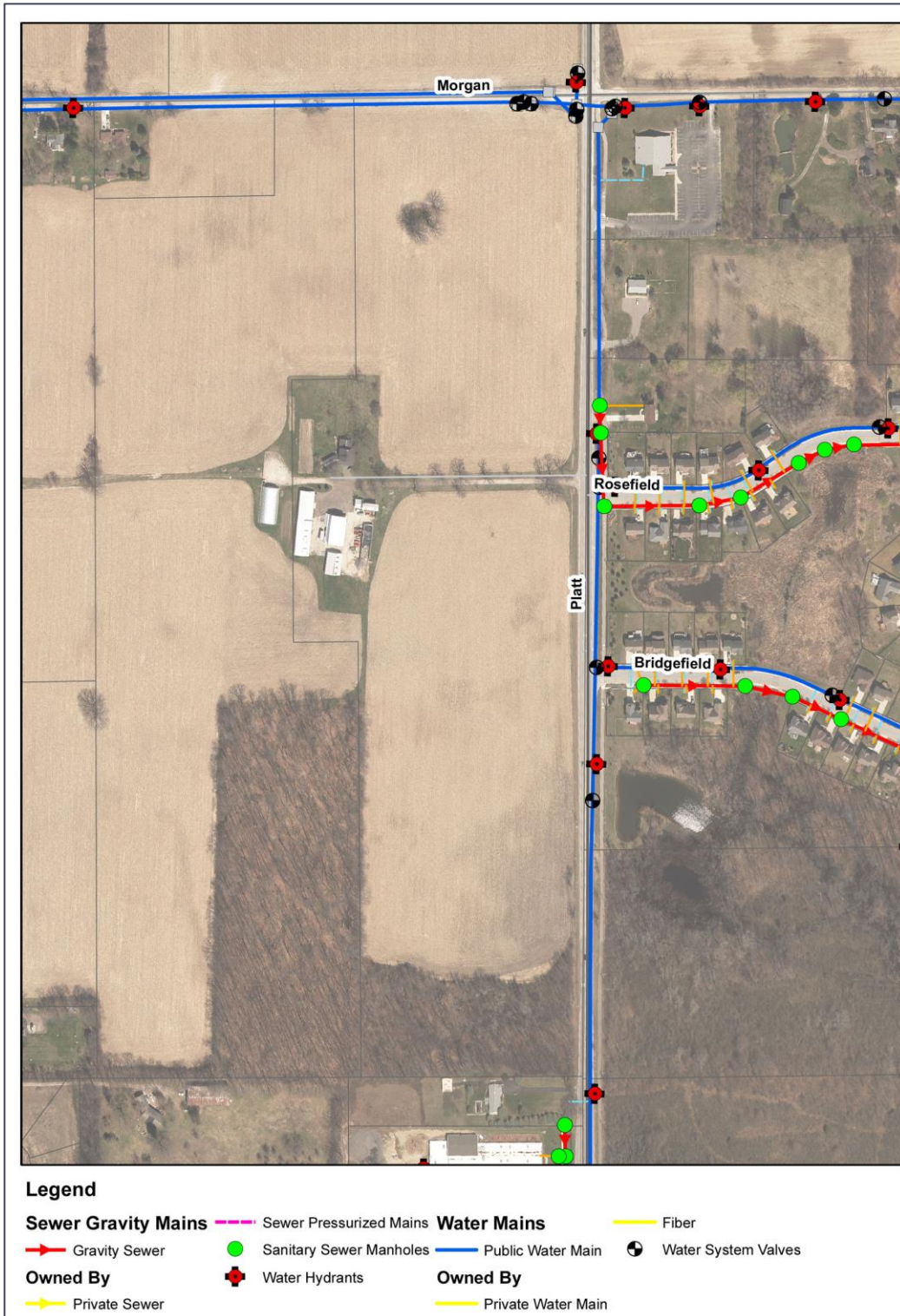
Information is subject to verification and no liability for errors or omissions is assumed. Price is subject to change and listing withdrawal.

# 5174 Platt Road – Ann Arbor, Michigan

Land For Sale

78.88  
Acres  
AVAILABLE

## Utilities Map\*



\*Source is Pittsfield Twp. Engineer

For more information, please contact:

**JAY CHAVEY**  
(248) 948 4196  
jchavey@signatureassociates.com

**SIGNATURE ASSOCIATES**  
One Towne Square, Suite 1200  
Southfield, MI 48076  
www.signatureassociates.com