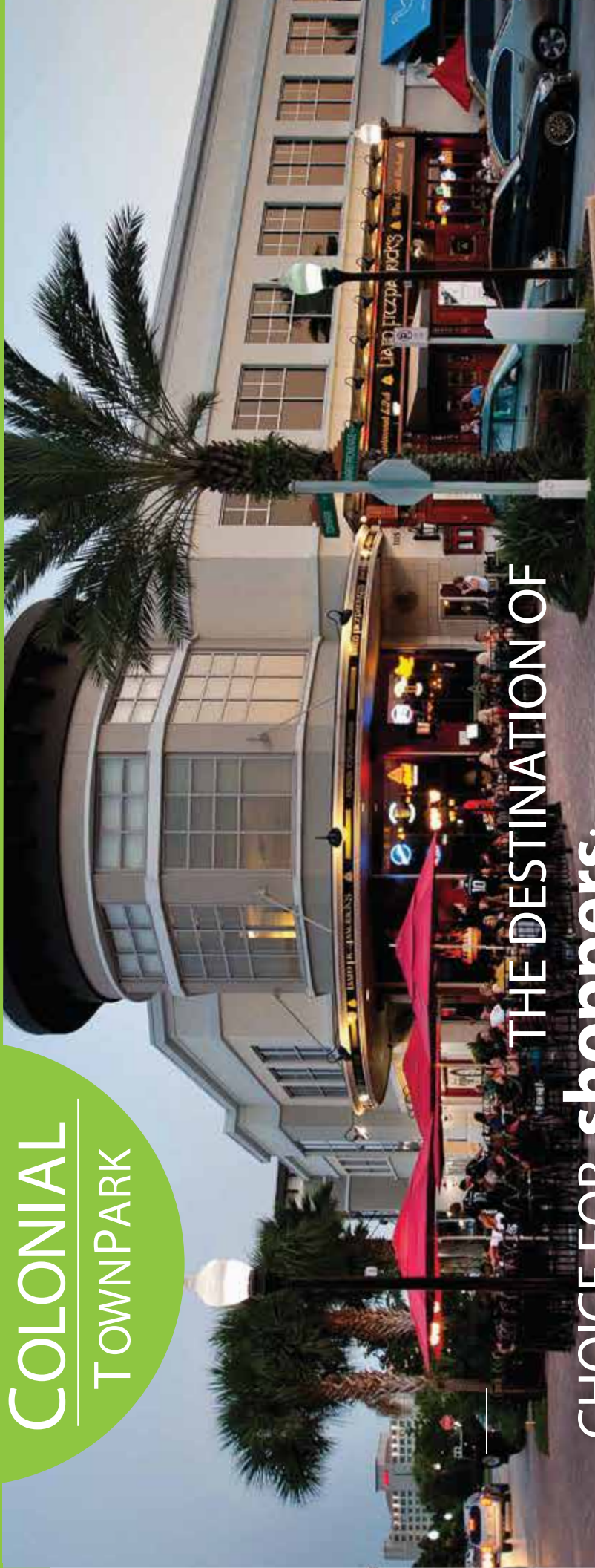


COLONIAL TOWNPARK



THE DESTINATION OF
CHOICE FOR shoppers;
THE PREMIER LOCATION FOR **retailers**



Located at

THE INTERSECTION OF I-4 AND COUNTY ROUTE
46A IN LAKE MARY / HEATHROW, FL.

Owned by:



Brian Jones | 407.516.9405 | bjones@selectstrat.com

SELECT STRATEGIES REALTY

5770 Hoffner Ave, Suite 102 | Orlando, FL 32822

The center is an entertainment destination with a stadium seating 12-screen Cineplex.

D940 Available
1,535 SF

COMPSTONE
1,177 SF

AmStar
12 Screen Theater
48,903 SF

Papa Joe's
Pizza & Pasta
2,638 SF

Available
C1211
Paramount
Fine Foods
1,305 SF

Dexter's
4,647 SF

Graffiti
Junktion
3,223 SF

AMRAZ
Japanese
Steakhouse
& Sushi
7,511 SF

Le Macaron
Vineyard Wine
4,424 SF

WILCOX WATER
3,007 SF

Residential

Family
Chiropractic of
Heathrow
1,300 SF

Prop
Storage
1,226 SF

Corona
Cigar
3,102 SF

Salata
3,000 SF

Stalins

Pierce
Jewelers
1,452 SF

Liam
Fitzpatrick's
6,330 SF

DUFFYS
8,500 SF

Residential

Menches
Yogurt
1,636 SF

Kennedy's
Barber
1,204 SF

COLONIAL BANK
B1042
3,890 SF

Shanghai
1,205 SF

Revival IV Lounge
B1051
1,380 SF

Available
C1105
1,400 SF

B1071
F&D
Cantina
2,997 SF

Woolf Gang
Bakery
2,150 SF

Aveda
Salon
2,334 SF

Menches
Yogurt
1,636 SF

Kennedy's
Barber
1,204 SF

COLONIAL BANK
B1042
3,890 SF

Shanghai
1,205 SF

Revival IV Lounge
B1051
1,380 SF

Available
C1105
1,400 SF

B1071
F&D
Cantina
2,997 SF

Woolf Gang
Bakery
2,150 SF

Aveda
Salon
2,334 SF

Menches
Yogurt
1,636 SF

Kennedy's
Barber
1,204 SF

COLONIAL BANK
B1042
3,890 SF

Shanghai
1,205 SF

Revival IV Lounge
B1051
1,380 SF

Available
C1105
1,400 SF

B1071
F&D
Cantina
2,997 SF

Woolf Gang
Bakery
2,150 SF

Aveda
Salon
2,334 SF

Menches
Yogurt
1,636 SF

Kennedy's
Barber
1,204 SF

COLONIAL BANK
B1042
3,890 SF

Shanghai
1,205 SF

Revival IV Lounge
B1051
1,380 SF

Available
C1105
1,400 SF

B1071
F&D
Cantina
2,997 SF

Woolf Gang
Bakery
2,150 SF

Aveda
Salon
2,334 SF

Menches
Yogurt
1,636 SF

Kennedy's
Barber
1,204 SF

COLONIAL BANK
B1042
3,890 SF

Shanghai
1,205 SF

Revival IV Lounge
B1051
1,380 SF

Available
C1105
1,400 SF

B1071
F&D
Cantina
2,997 SF

Woolf Gang
Bakery
2,150 SF

Aveda
Salon
2,334 SF

Menches
Yogurt
1,636 SF

Kennedy's
Barber
1,204 SF

COLONIAL BANK
B1042
3,890 SF

Shanghai
1,205 SF

Revival IV Lounge
B1051
1,380 SF

Available
C1105
1,400 SF

B1071
F&D
Cantina
2,997 SF

Woolf Gang
Bakery
2,150 SF

Aveda
Salon
2,334 SF

Menches
Yogurt
1,636 SF

Kennedy's
Barber
1,204 SF

COLONIAL BANK
B1042
3,890 SF

Shanghai
1,205 SF

Revival IV Lounge
B1051
1,380 SF

Available
C1105
1,400 SF

B1071
F&D
Cantina
2,997 SF

Woolf Gang
Bakery
2,150 SF

Six Colonial Center office buildings border the property on the North and East sides, a portion of the 1.7 million sf of Class A office space.

H.I.E. Thomas Jr. Parkway
S.R. 46A

INTERNATIONAL PKWY

Space Available

1,400 – 5,621 SF

www.SelectStrategiesRealty.com

COLONIAL
TOWNPARK

Owned by:



FOR ADDITIONAL INFORMATION

PLEASE CONTACT:



Brian Jones | 407.516.9405 | bjones@selectstrat.com
SELECT STRATEGIES REALTY
5770 Hoffner Ave, Suite 102 | Orlando, FL 32822

200,000 sf
of RETAIL

1.7 millionsf
of CLASS A OFFICE

3 Hotels
with OVER 600 ROOMS

500
RESIDENTIAL
UNITS

Key Tenants



Demographics

Estimated 2018 Population

2018 Average HH Income

Median Age

	1 MILE	3 MILES	5 MILES
Estimated 2018 Population	5,533	57,280	114,080
2018 Average HH Income	\$105,862	\$105,154	\$95,712
Median Age	42.5	41.9	42.9

Mixed Use Project

WITH OFFICE, RESIDENTIAL, RETAIL & HOTELS

THE PROPERTY IS

NESTLED IN AN EXCLUSIVE,
high income, younger area
OF LAKE MARY & HEATHROW,
a gem of greater Orlando.

COLONIAL TOWNPARK

Owned by:
COLONIAL TOWN PARK
870 Village Oak Lane
Lake Mary, FL 32746



Brian Jones | 407.516.9405 | bjones@selectstrat.com
SELECT STRATEGIES REALTY
5770 Hoffner Ave, Suite 102 | Orlando, FL 32822