



**CUSHMAN &
WAKEFIELD**

FOR SALE OR LEASE

32667 Baethe Road
Waller, TX 77484

7,500 Total SF
3,600 SF Office
3,900 SF Warehouse
On 5 Acres
20' Ceiling Height
2 Grade Level Doors
1 Dock Door



SALE PRICE: \$650,000

LEASE RATE: \$5,500 / month net

CAPE BELL
713 331 1750
cape.bell@cushwake.com

KAYLA RIPPLE
713 331 1811
kayla.ripple@cushwake.com

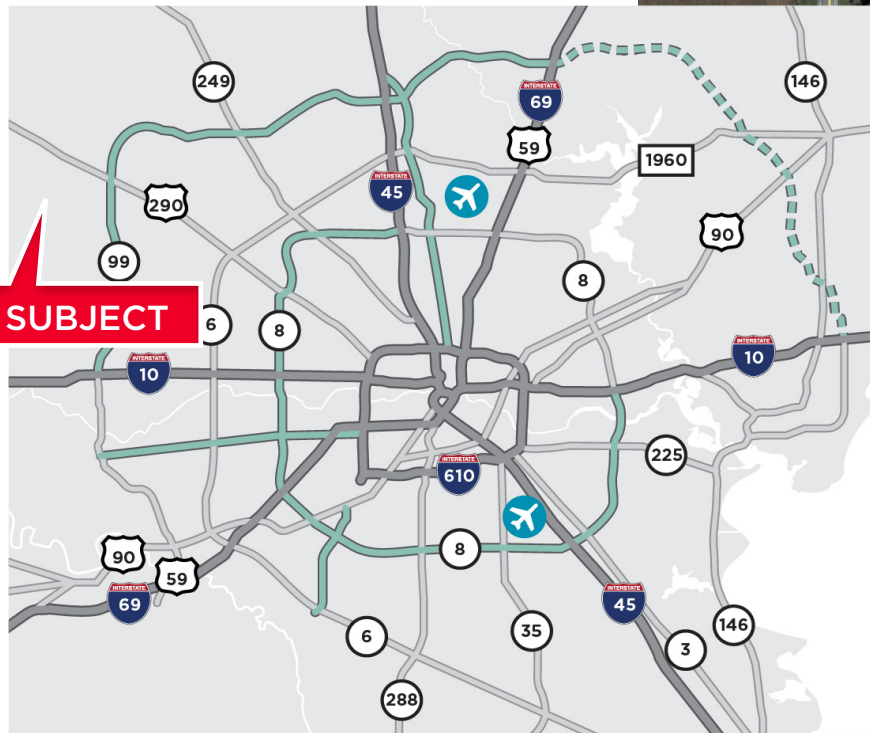
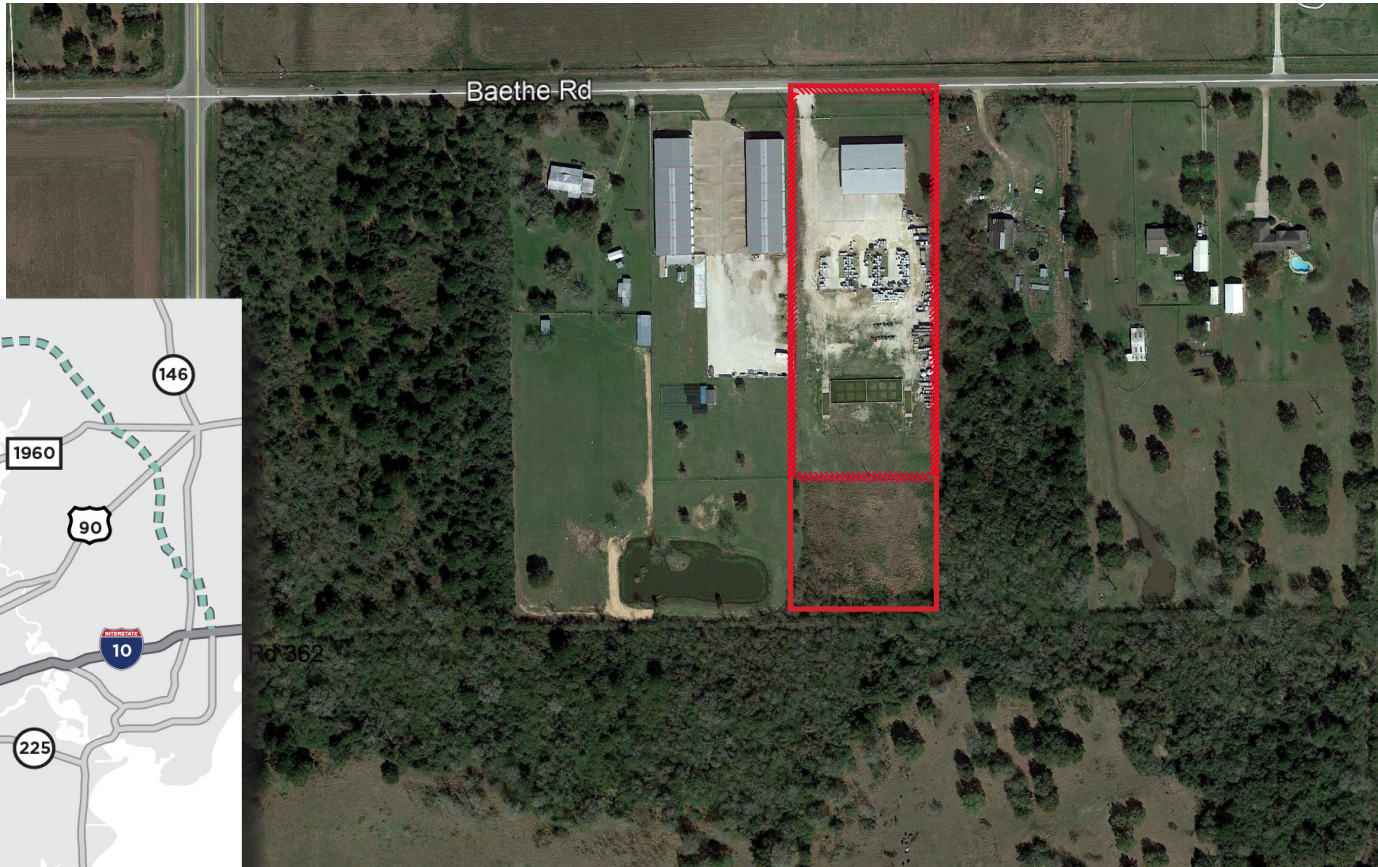
1330 Post Oak Blvd, Suite 2700
Houston, TX 77056
Main +1 713 877 1700
cushmanwakefield.com

FOR SALE OR LEASE

32667 Baethe Road

Waller, TX 77484

- 5 Acres total
- 2.89 Acres fenced & stabilized
- 10 min drive to Hwy 290
- 22 min drive to I - 10

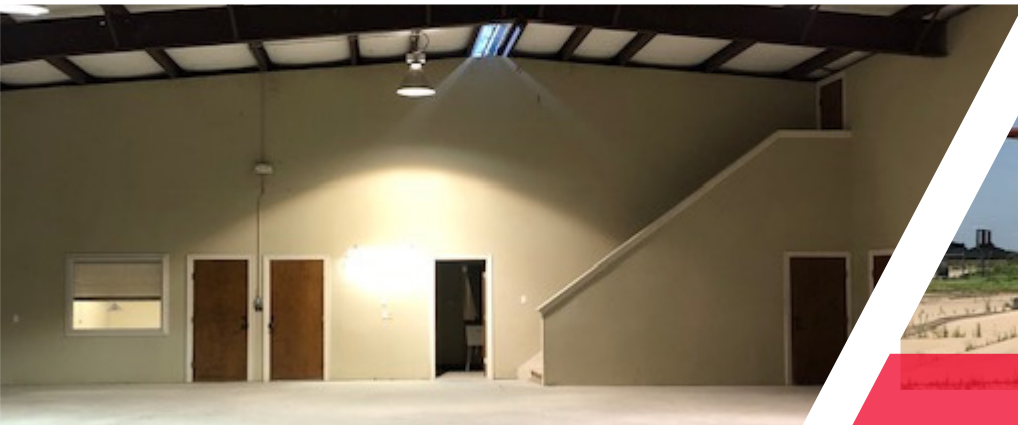


CAPE BELL
713 331 1750
cape.bell@cushwake.com

KAYLA RIPPLE
713 331 1811
kayla.ripple@cushwake.com

1330 Post Oak Blvd, Suite 2700
Houston, TX 77056
Main +1 713 877 1700
cushmanwakefield.com

FOR SALE OR LEASE
32667 Baethe Road
Waller, TX 77484



CAPE BELL
713 331 1750
cape.bell@cushwake.com

KAYLA RIPPLE
713 331 1811
kayla.ripple@cushwake.com

1330 Post Oak Blvd, Suite 2700
Houston, TX 77056
Main +1 713 877 1700
cushmanwakefield.com