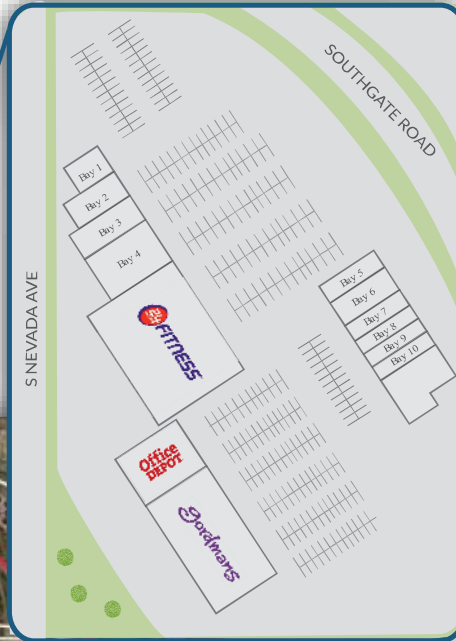


BROADMOOR TOWNE CENTER

1892 Southgate Road- Colorado Springs, CO 80906

● Vacant ● Occupied

Gordmans	Anchor A	49,955 SF
24 Hour fitness	Anchor B	46,087 SF
Available	Anchor C	15,000 SF
Noodles & Co.	Bay 1	3,150 SF
Panera Bread	Bay 2	5,231 SF
Corks Bottles & Brews	Bay 3	4,500 SF
Tan Your Hide	Bay 4	7,500 SF
Sprint	Bay 5	1,680 SF
Larkburger	Bay 6	2,380 SF
EB Games	Bay 7	1,428 SF
Air Academy Credit Union	Bay 8	1,496 SF
Keva Juice	Bay 9	1,428 SF
Wing Stop	Bay 10	1,468 SF
Qdoba	Bay 11-12	2,494 SF



DEMOGRAPHICS

PRIMARY MARKET RADIUS

Miles	Population	Households
1 Mile Radius	11,666	5,595
3 Mile Radius	83,756	36,909
5 Mile Radius	208,709	86,985

INCOME PER HOUSEHOLD

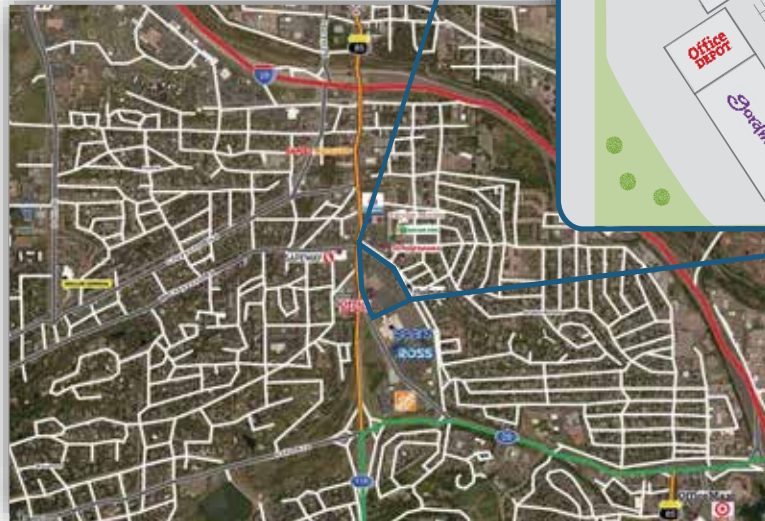
Miles	Average HH	Medium HH
1 Mile Radius	\$46,642	\$37,754
3 Mile Radius	\$57,347	\$45,720
5 Mile Radius	\$56,711	\$46,098

MEDIAN AGE

Miles	Age
1 Mile Radius	36.7
3 Mile Radius	36.8
5 Mile Radius	35.3

OTHER INFORMATION

Total Leasable SF	143,797
Parking Ratio per 1,000 SF	5.75:1
Traffic Count (Est. Daily Average)	6,676



For Further Information Contact
NODDLE COMPANIES
 (402) 496-1616 or (800) 365-1616
 2285 S. 67th St., Suite 250, Omaha, NE 68106
www.noddlecompanies.com