

24  
WEST 40TH  
BRYANT PARK SOUTH

# SHORT & SUITE

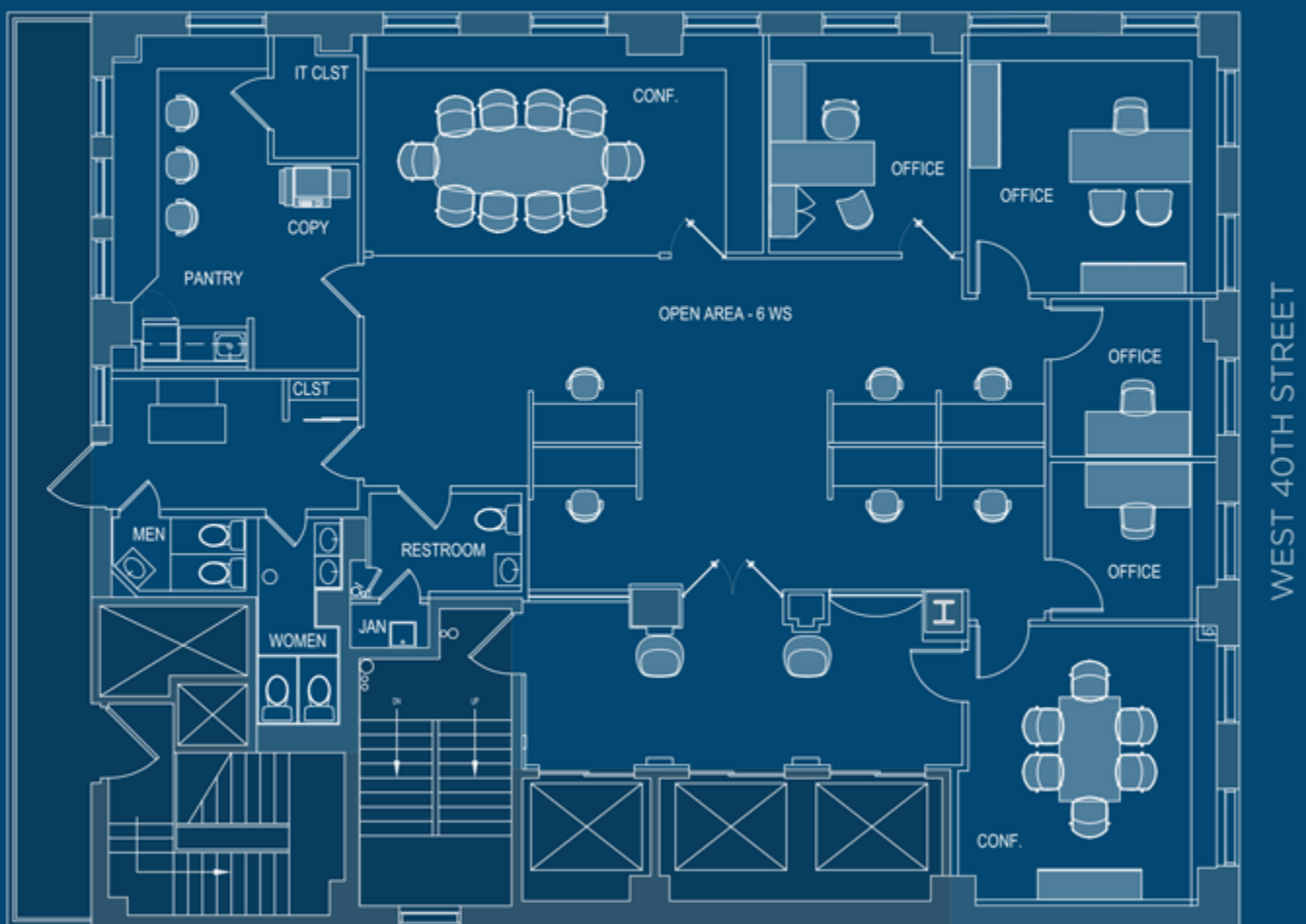
Entire 16th Floor of 4,226 RSF



## Features:

- Aggressive short term deal
- Flexible term
- Tenant controlled HVAC
- Unobstructed views of Bryant Park
- Large, operable windows provide great natural light and fresh air
- Centrally located near Grand Central, Port Authority & Penn Station with convenient access to 18 subway lines

## Entire 16<sup>th</sup> Floor - 4,226 RSF Existing Conditions



[DOWNLOAD FLOORPLAN](#)

For leasing information, please contact:

**Scott J. Klau**  
t 212-372-2244  
scott.klau@nrmk.com

**Erik S. Harris**  
t 212-372-2105  
erik.harris@nrmk.com

**Zachary A. Weil**  
t 646-441-3744  
zachary.weil@nrmk.com

**NEWMARK**  
**HARBOR GROUP**  
INTERNATIONAL

[DOWNLOAD FLYER](#)

125 Park Avenue, New York, NY 10017 t 212-372-2000

The information contained herein has been obtained from sources deemed reliable but has not been verified and no guarantee, warranty or representation, either express or implied, is made with respect to such information. Terms of sale or lease and availability are subject to change or withdrawal without notice.

©2021 Newmark. All Rights Reserved.