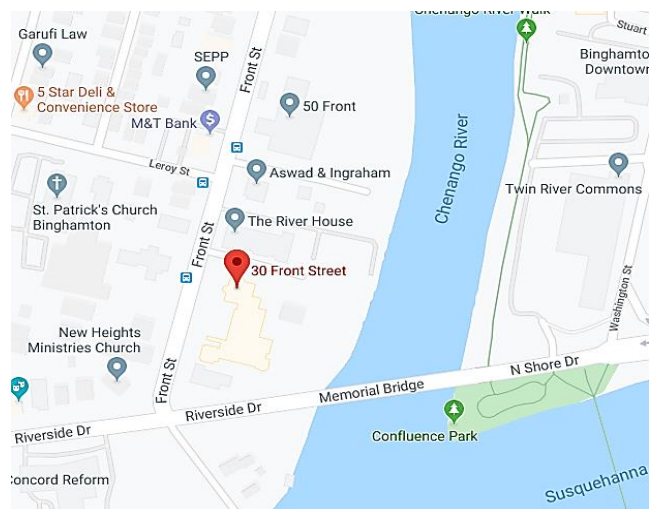




FEATURES

- Historic building with hard wood floors and exposed brick.
- Largely open floor plan.
- Elevator and completely handicap accessible.
- Bathrooms on both floors.
- Located on the grounds of Roberson Museum.
- Five minute walk to downtown.
- Located on the bus route.

DETAILS	
AVAILABLE	1,758 SF (1 st floor)
LEASE RATE	\$13.50/SF Gross
TAX ID	160.56-1-3



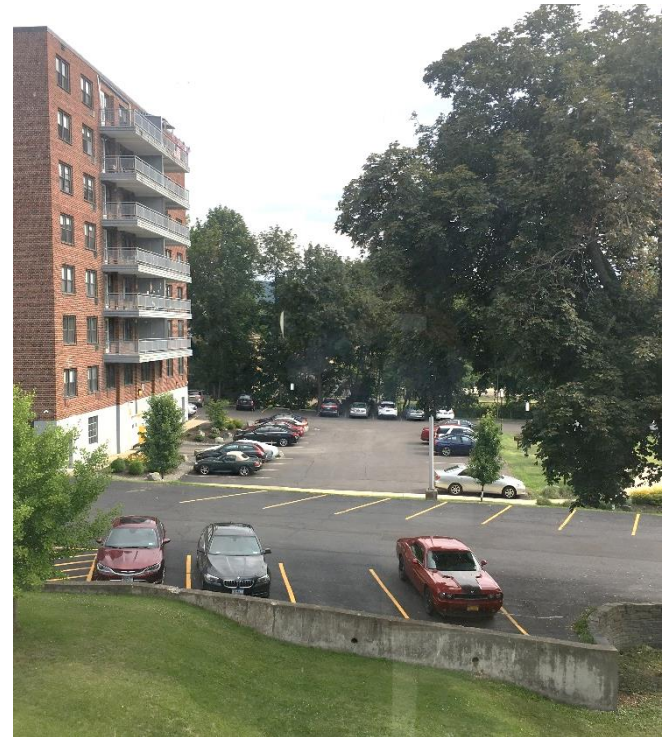
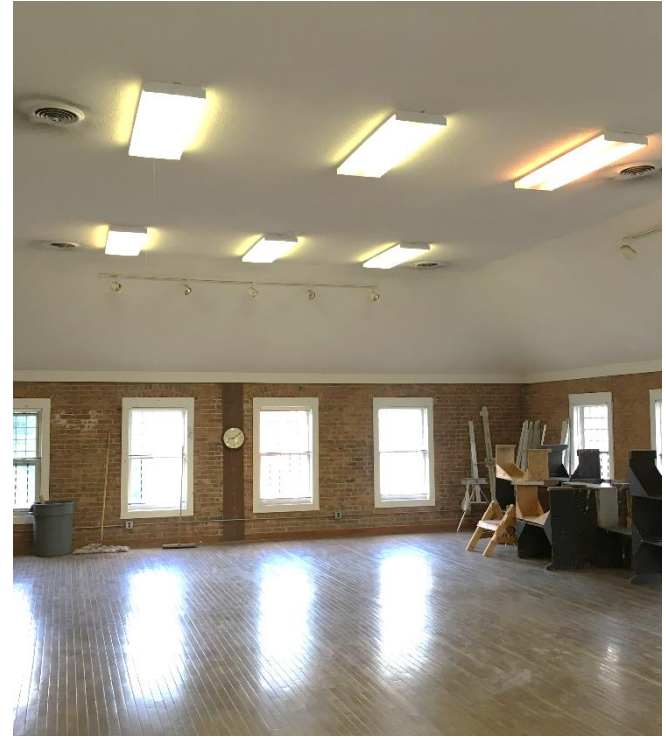
For more information, please contact:

Bruce "Ethan" Cook
Real Estate Salesperson
 607.754.5990 ext. 311
 Ecook@pyramidbrokerage.com

84 Court Street, Suite 300
 Binghamton, New York 13901
 phone: +1 607 754 5990
 pyramidbrokerage.com



FOR LEASE
30 Front Street
Binghamton, NY 13905



For more information, please contact:

Bruce "Ethan" Cook
Real Estate Salesperson
607.754.5990 ext. 311
Ecook@pyramidbrokerage.com

84 Court Street, Suite 300
Binghamton, New York 13901
phone: +1 607 754 5990
pyramidbrokerage.com