



FOR LEASE

4601

WILSHIRE BOULEVARD, LOS ANGELES

WILSHIRE MUIRFIELD CENTER | 1,480 - 24,676 SF

FOR MORE INFORMATION CONTACT:

CHRIS RUNYEN, CCIM

O. 213.632.7715

crunyen@naicapital.com | Cal DRE Lic # 01208531

NAICapital

No warranty, express or implied, is made as to the accuracy of the information contained herein. This information is submitted subject to errors, omissions, change of price, rental or other conditions, withdrawal without notice, and is subject to any special listing conditions imposed by our principals. Cooperating brokers, buyers, tenants and other parties who receive this document should not rely on it, but should use it as a starting point of analysis, and should independently confirm the accuracy of the information contained herein through a due diligence review of the books, records, files and documents that constitute reliable sources of the information described herein. Logos are for identification purposes only and may be trademarks of their respective companies. NAI Capital, Inc. Cal DRE Lic. #01990696.



FOR LEASE 4601

WILSHIRE BOULEVARD, LOS ANGELES

LEASE HIGHLIGHTS

- Asking Rate \$2.95-\$3.25/sf FSG
- Prime Hancock Park Location
- Immediate Access to 101 & 10 Freeways
- Abundant Free Subterranean Parking
- Professional, Class A Office Building
- Outdoor Patio Access from Ground Floor Spaces



AVAILABLE SPACES

Spaces	Size (SF)	Rental Rate
Suite 110	14,267	\$2.95
Suite 150	7,006	\$2.95
Suite 240	1,480	\$3.25
Suite 300	24,676	\$2.95



FOR LEASE

4601

WILSHIRE BOULEVARD, LOS ANGELES



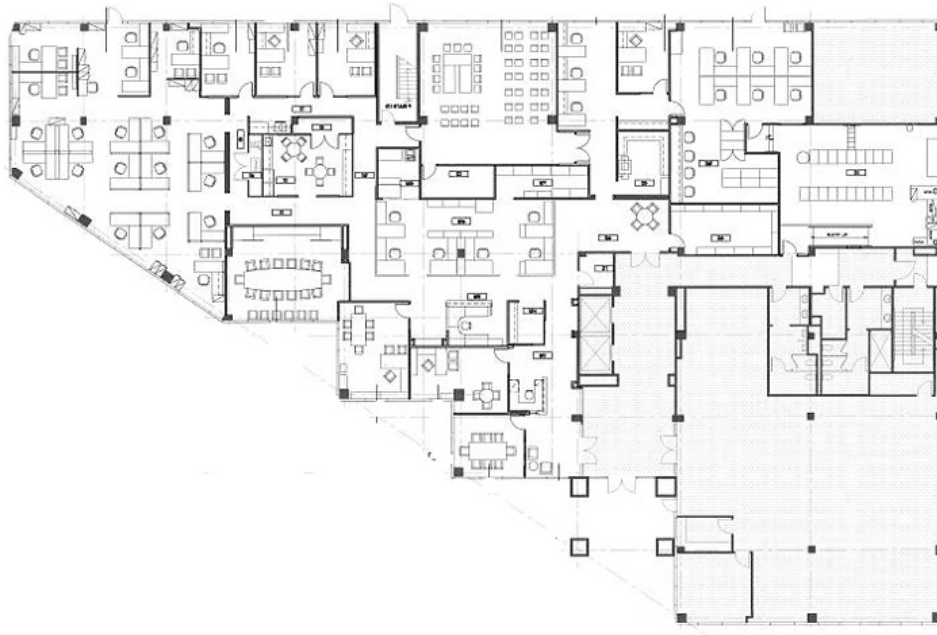
FOR LEASE

4601

WILSHIRE BOULEVARD, LOS ANGELES

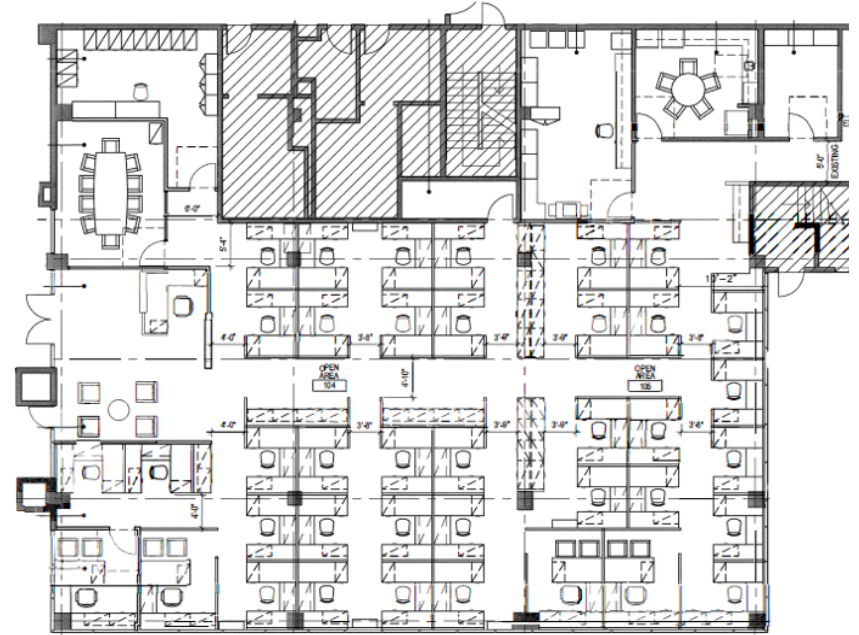
SUITE 110

14,267 SF



SUITE 150

7,006 SF



FOR LEASE

4601

WILSHIRE BOULEVARD, LOS ANGELES

SUITE 240

1,480 SF

