

FOR LEASE

22,760 SF FREESTANDING INDUSTRIAL / R&D BUILDING

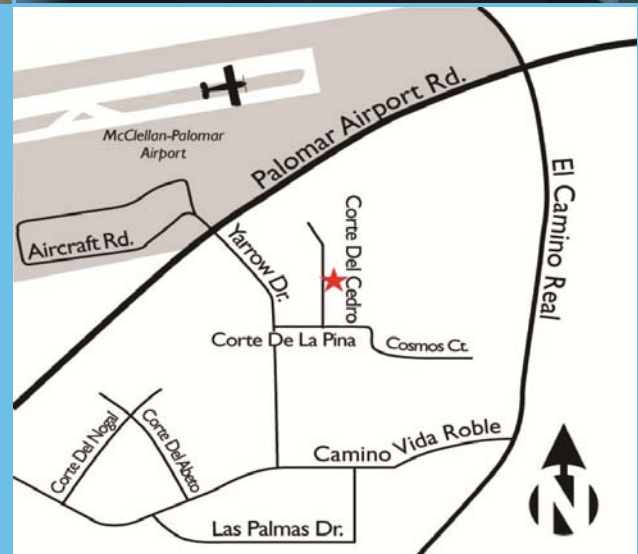
6150 CORTE DEL CEDRO, CARLSBAD, CA 92009



Property Highlights

- Freestanding 22,760 SF Industrial/R&D Corporate Headquarters Building
- Approximately 9,800 SF Offices
- Divisible to approximately 11,900 SF
- Open Ceiling—Modern Interior Office Layout
- 26' Clear Height
- Two (2) Grade Level Doors
- Operable Windows In Office Area
- West of El Camino Real

LEASE RATE: \$0.85/SF NNN (\$0.15)



DAVE PINNEGAR
760 930 7942
dave.pinnegar@colliers.com
Lic# 00856143

RUSS JABARA
760 930 7923
russ.jabara@colliers.com
Lic# 01315296

5901 Priestly Drive, Suite 100
Carlsbad, CA 92008
www.colliers.com/carlsbad



FOR LEASE

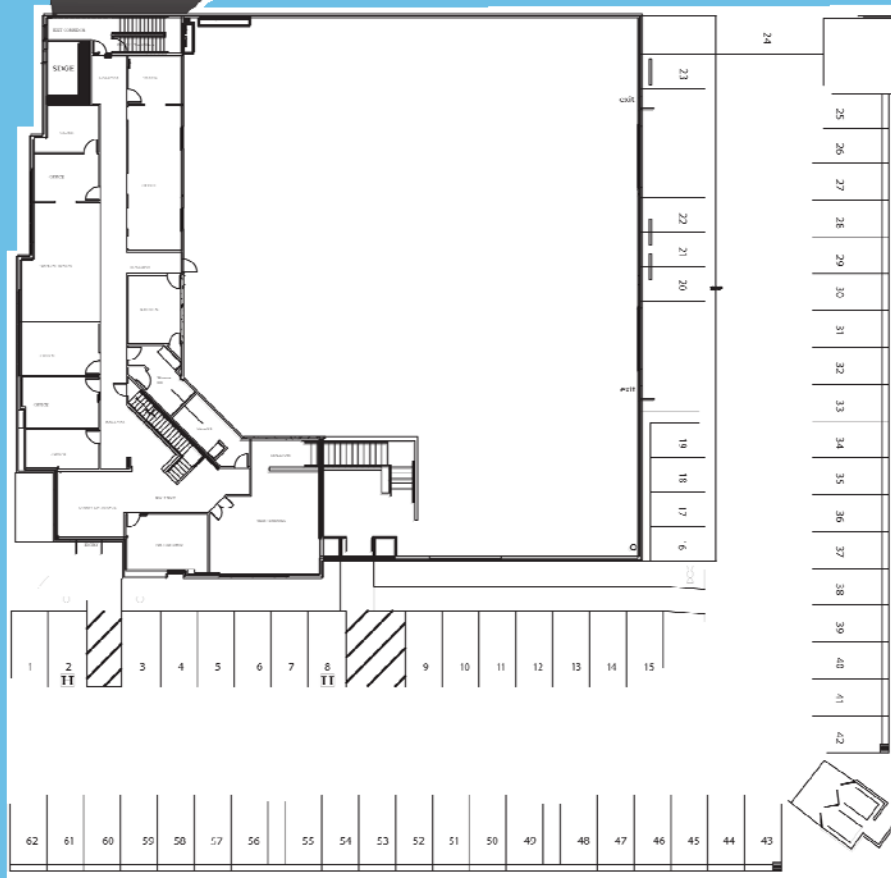
22,760 SF FREESTANDING INDUSTRIAL / R&D BUILDING

6150 CORTE DEL CEDRO, CARLSBAD, CA 92009

SECOND FLOOR



FIRST FLOOR



DAVE PINNEGAR
760 930 7942
dave.pinnegar@colliers.com
Lic# 00856143

RUSS JABARA
760 930 7923
russ.jabara@colliers.com
Lic# 01315296



www.colliers.com/carlsbad

This document has been prepared by Colliers International for advertising and general information only. Colliers International makes no guarantees, representations or warranties of any kind, expressed or implied, regarding the information including, but not limited to, warranties of content, accuracy and reliability. Any interested party should undertake their own inquiries as to the accuracy of the information. Colliers International excludes unequivocally all inferred or implied terms, conditions and warranties arising out of this document and excludes all liability for loss and damages arising there from. Colliers International is a worldwide affiliation of independently owned and operated companies.