



EMMA
COMMUNITY HOUSE

MARTIN LUTHER KING, JR.
1964
BUSINESS MOVEMENT

1
3
0
8

A.D. 1923

OVER-THE-RHINE
DISTINCT OFFICE
FOR LEASE

AT 1308 RACE STREET



GRANDIN
PROPERTIES



CUSHMAN &
WAKEFIELD

1
3
0
8

EMANUEL COMMUNITY HOUSE
HOME FOR GIRLS
YOUTH CENTER
UNITY CENTER

WASHINGTON PARK



front yard

COURTYARD
BIKE-RACKS
BASKETBALL
HOPSCOTCH



backyard







make it
your own

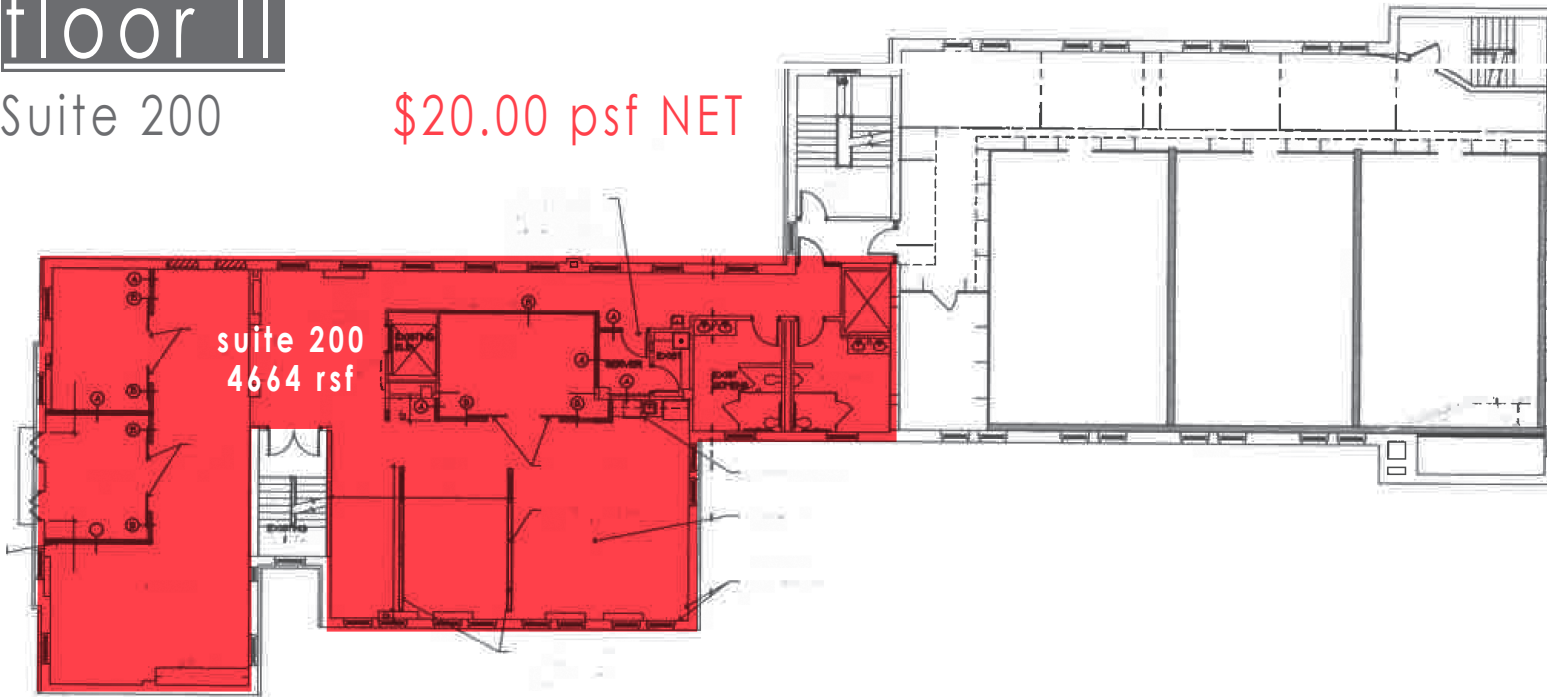




floor II

Suite 200

\$20.00 psf NET





WASHINGTON PARK
CINCINNATI MUSIC HALL
FINDLAY MARKET
ZIEGLER PARK
RHINEGEIST BREWERY
PENDELTON ARTS CENTER
UNION HALL
YMCA



events

SUNDRY AND VICE
BAKERSFIELD
ZULA
SALAZAR
SACRED BEAST
THE LACKMAN
VENICE ON VINE
TASTE OF BELGIUM
THE EAGLE



entertain



on-site tenant parking



OTR

CBD

connected
ON STREETCAR AND METRO ROUTE
ACROSS FROM RED BIKE STATION
ONE BLOCK FROM ZIPCAR
WALKER'S PARADISE SCORE OF 98



GRANDIN
PROPERTIES



CUSHMAN &
WAKEFIELD



SCOTT ABERNETHY
513 763 3013

MICHELLE KLINGENBERG
513 763 3023

scott.abernethy@cushwake.com

michelle.klingenberg@cushwake.com