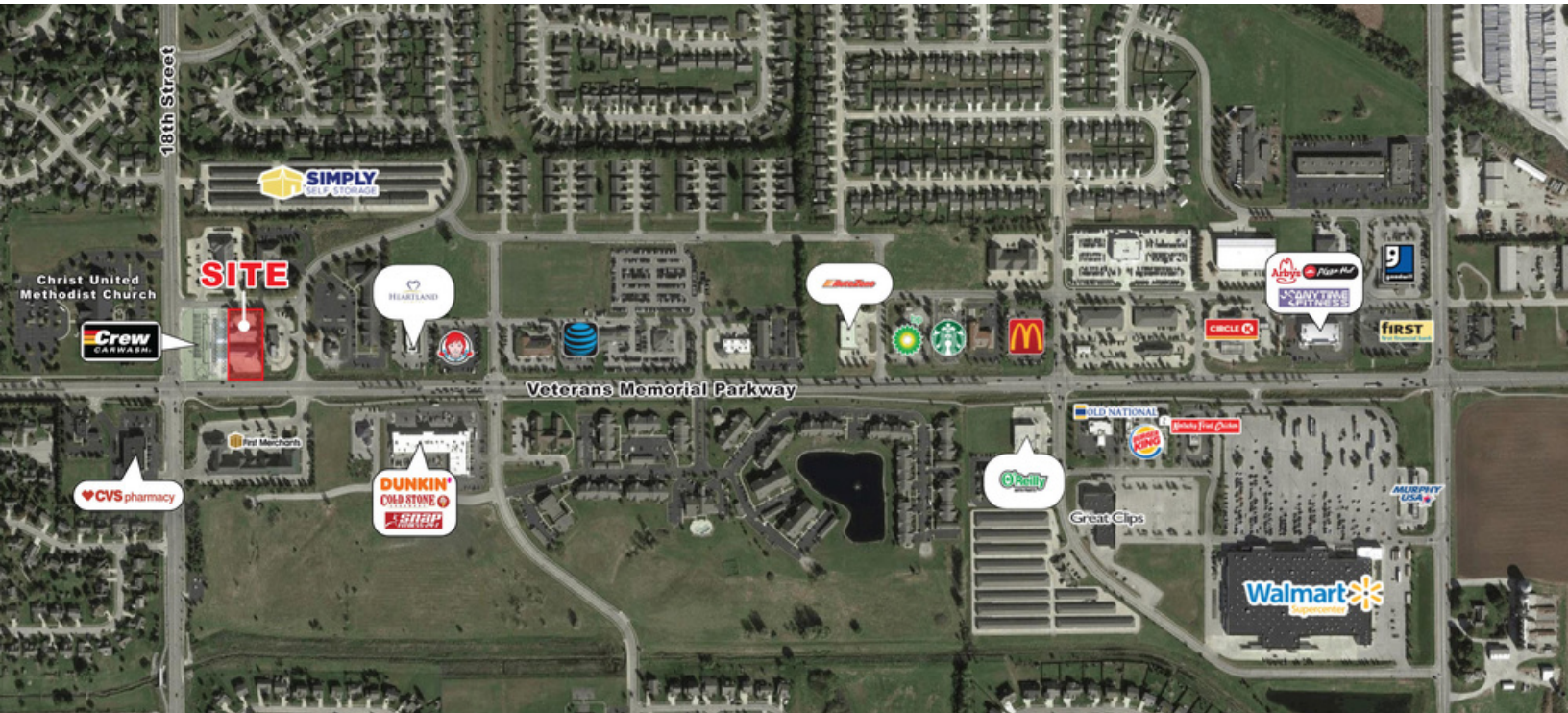


# DEVELOPMENT GROUND

1805 Troxel Drive Lafayette, IN 47909



MIDLAND ATLANTIC  
PROPERTIES



## PROPERTY OVERVIEW

Development ground adjacent to a new Crew Carwash available.

## PROPERTY HIGHLIGHTS

- Acreage: 0.84 Acres
- Adjacent to New Crew Carwash
- Located in Area with Dense Daytime Population

## DEMOGRAPHICS

	1 MILE	3 MILES
Total Population	10,808	52,326
Average HH Income	\$87,497	\$68,669
Businesses	191	1,510
Employees	1,843	24,607

## TRAFFIC COUNTS

Veterans Memorial Parkway	15,358
18th Street	12,057



## MIDLAND ATLANTIC PROPERTIES

Indianapolis Office  
3801 East 82nd Street, Suite B  
Indianapolis, IN 46240

MIDLANDATLANTIC.COM

## PATRICK BOYLE

Direct: 317.597.1718  
Cell: 317.679.6322  
pjboyle@midlandatlantic.us

## SHAWN HEFFERN

Direct: 317.597.1715  
Cell: 317.695.8938  
sheffern@midlandatlantic.us

DEVELOPMENT • BROKERAGE • ACQUISITIONS • MANAGEMENT

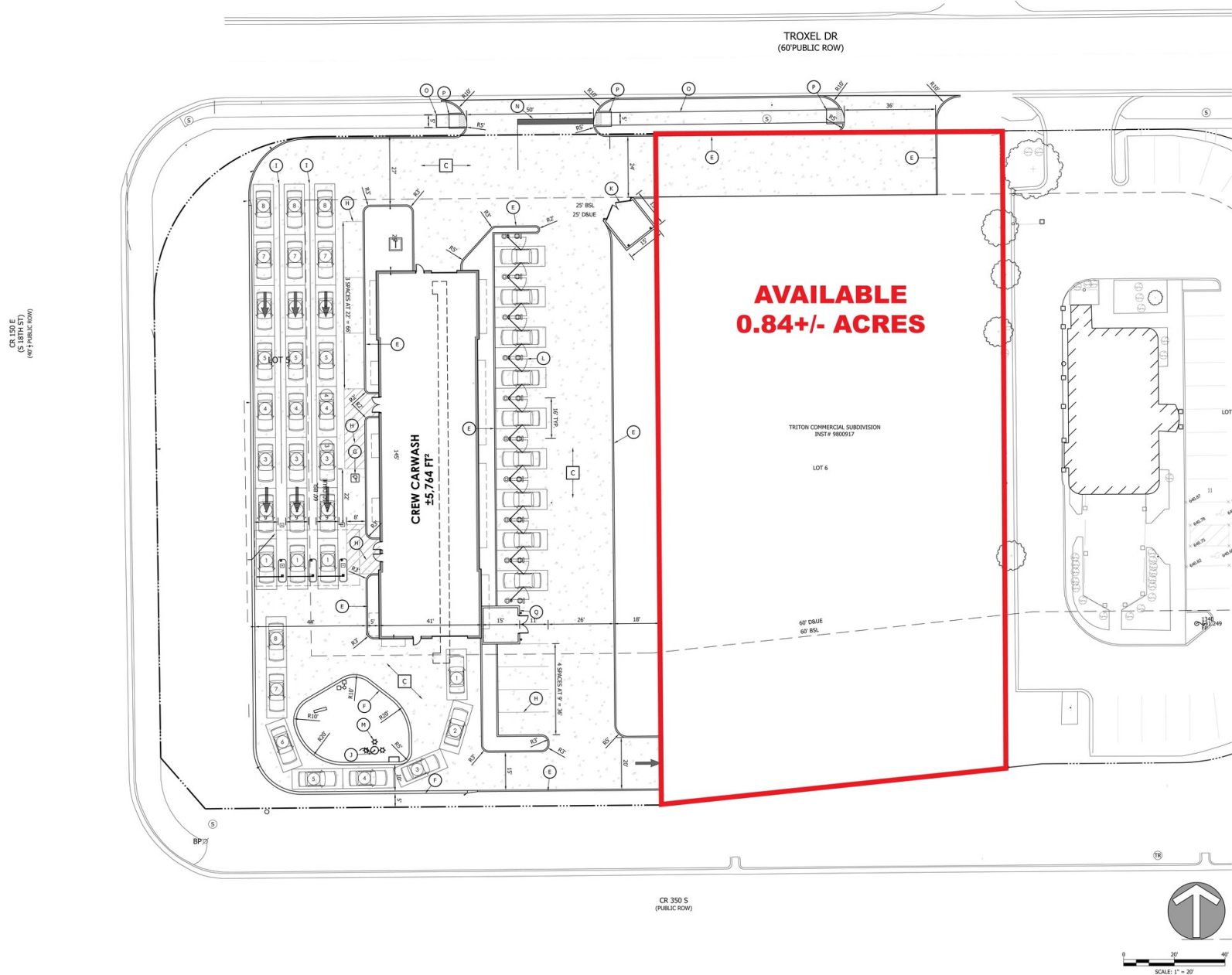
Information contained herein has been obtained from sources deemed reliable but is not guaranteed and is subject to change without notice.

# DEVELOPMENT GROUND

1805 Troxel Drive Lafayette, IN 47909



MIDLAND ATLANTIC  
PROPERTIES



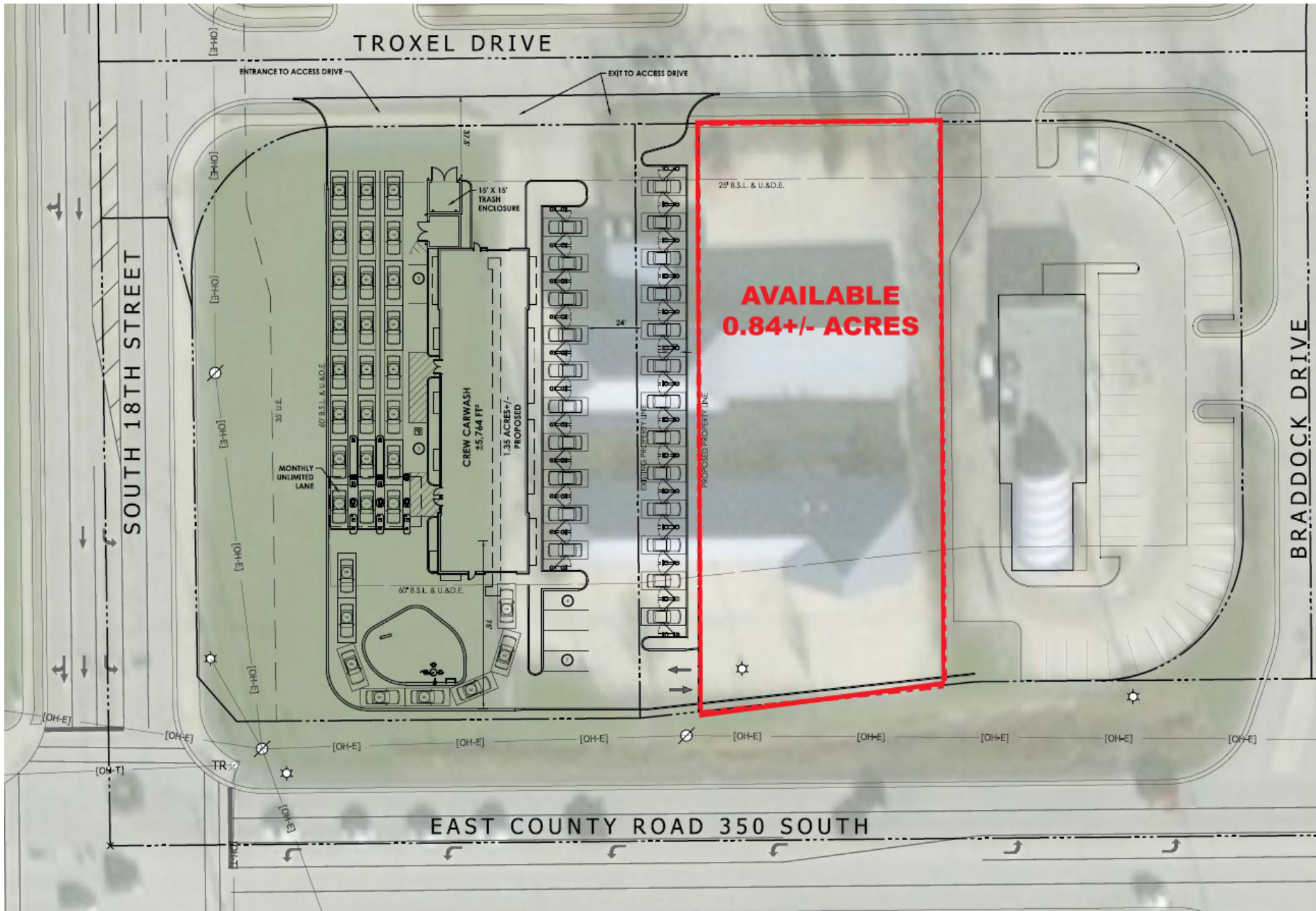


# DEVELOPMENT GROUND

1805 Troxel Drive Lafayette, IN 47909



MIDLAND ATLANTIC  
PROPERTIES





# DEVELOPMENT GROUND

1805 Troxel Drive Lafayette, IN 47909



MIDLAND ATLANTIC  
PROPERTIES



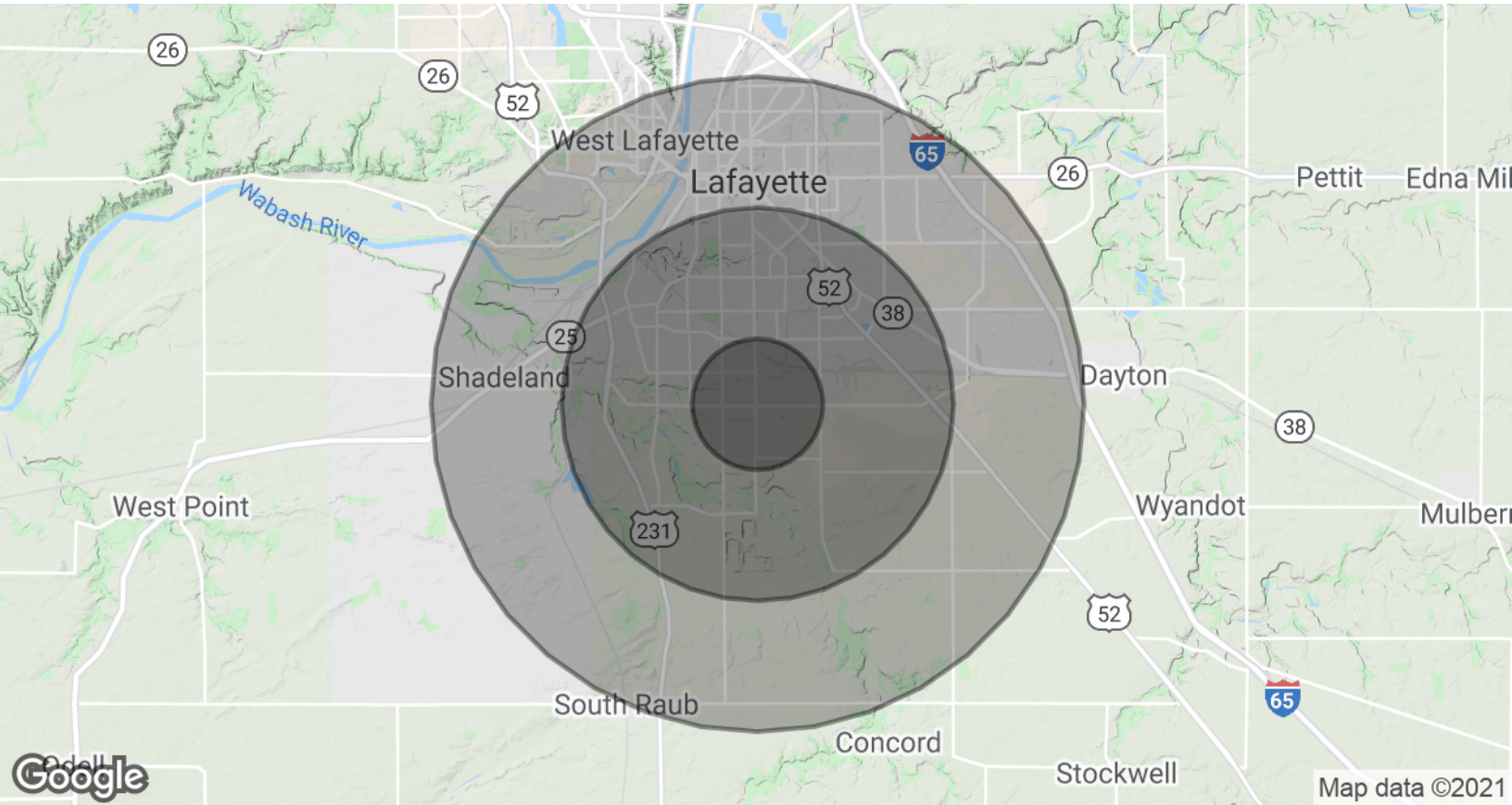


# DEVELOPMENT GROUND

1805 Troxel Drive Lafayette, IN 47909



MIDLAND ATLANTIC  
PROPERTIES



## POPULATION & HOUSING

	1 MILE	3 MILES	5 MILES
Total Population	10,808	52,326	116,543
Projected Annual Growth (2019-2024)	0.7%	0.9%	0.8%
Total Households	4,291	21,444	45,026
Median Home Value	\$154,738	\$139,589	\$138,040

## INCOME & BUSINESS

	1 MILE	3 MILES	5 MILES
Average HH income	\$87,497	\$68,669	\$59,589
Daytime Population (16+ years)	4,108	36,730	124,724
Total Businesses	191	1,510	4,659
Total Employees	1,842	24,607	87,772

### MIDLAND ATLANTIC PROPERTIES

Indianapolis Office  
3801 East 82nd Street, Suite B  
Indianapolis, IN 46240

### PATRICK BOYLE

Direct: 317.597.1718  
Cell: 317.679.6322  
pjboyle@midlandatlantic.us

### SHAWN HEFFERN

Direct: 317.597.1715  
Cell: 317.695.8938  
sheffern@midlandatlantic.us

MIDLANDATLANTIC.COM

DEVELOPMENT • BROKERAGE • ACQUISITIONS • MANAGEMENT

Information contained herein has been obtained from sources deemed reliable but is not guaranteed and is subject to change without notice.