

Stockyards Commerce Center

Building A - 13,625 SF

2630 N Marine Drive
Portland, OR

Excellent access to I-5, Portland
and Vancouver

13,625 SF available

3,005 SF office

Four (4) dock doors

Two (2) grade doors

24' clear height

ESFR sprinklers

Professionally managed
industrial park

Rate: \$0.50/\$0.85 NNN

NNN Expenses: \$0.158 PSF



Contact

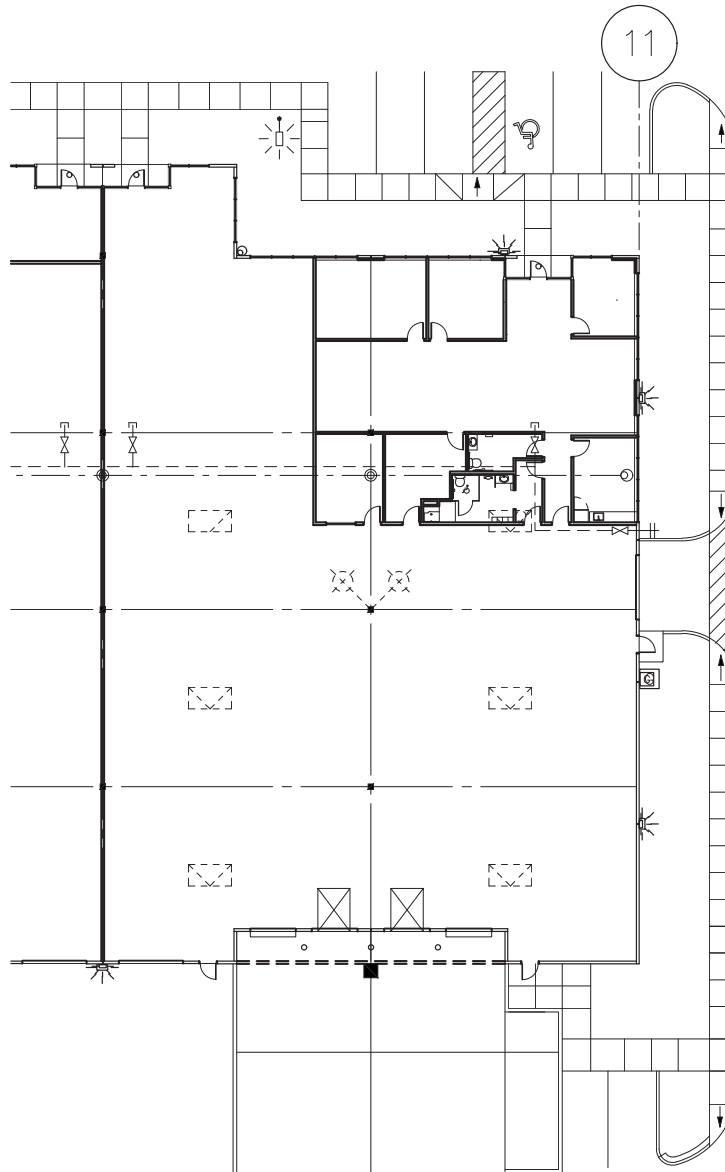
Tom Talbot, SIOR
503.221.2270
ttalbot@kiddermathews.com

A Property By:



Stockyards Commerce Center

Bldg A | Suite 2630 | 13,625 SF



Contact

Tom Talbot, SIOR
503.221.2270
ttalbot@kiddermathews.com

A Property By:

