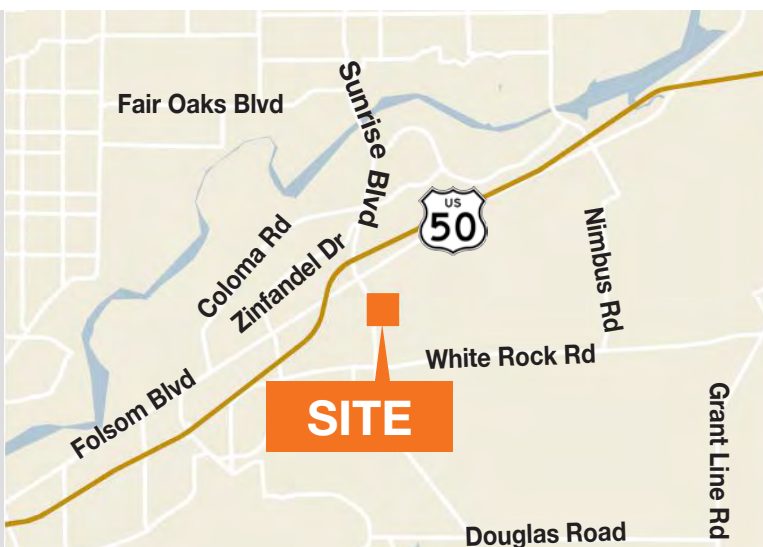


**FOR LEASE**

**11285 Sunrise Gold Circle**

Rancho Cordova, CA



**LEASE RATE: \$0.60 PSF, Industrial Gross**

Suite A:  $\pm 2,000$  SF with  $\pm 1,140$  SF office ,  $\pm 860$  SF warehouse

16' clear height, 3/1,000 parking ratio

Zoned M-1 (Light Industrial)

Insulated, 12'x14' roll-up doors in each unit

Sprinklered, 3-phase power

**CONTACT**

**Jay Richter**

Vice President

916.751.3609

[jrichter@kiddermathews.com](mailto:jrichter@kiddermathews.com)

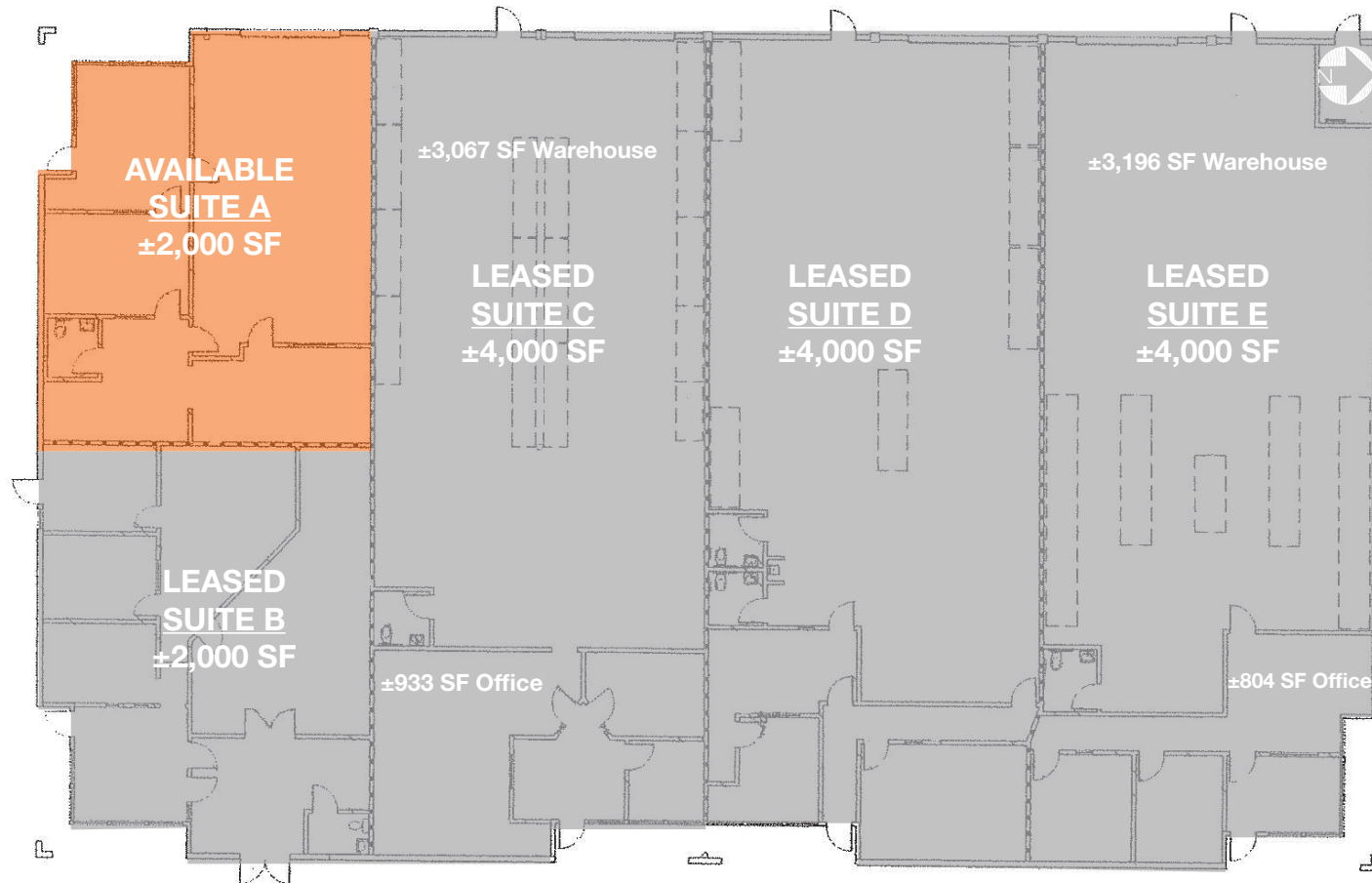
Lic #01305696



# FOR LEASE

# 11285 Sunrise Gold Circle

## FLOOR PLAN



## CONTACT

**Jay Richter**  
Vice President  
916.751.3609  
jr Richter@kiddermathews.com  
Lic #01305696





# FOR LEASE

# 11285 Sunrise Gold Circle

## LOCATION AERIAL



## CONTACT

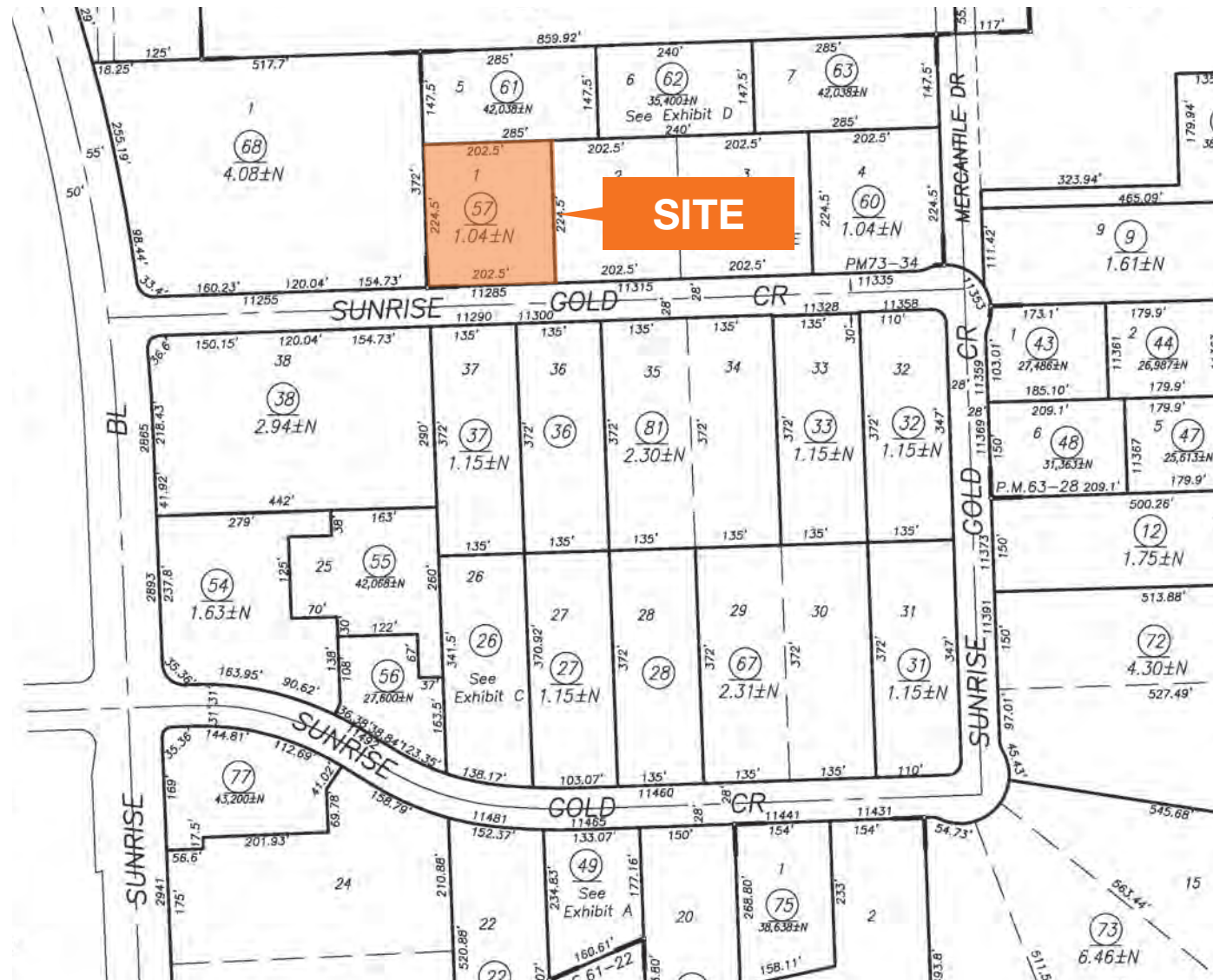
**Jay Richter**  
Vice President  
916.751.3609  
jrichter@kiddermathews.com  
Lic #01305696



# FOR LEASE

# 11285 Sunrise Gold Circle

## PARCEL MAP



## CONTACT

**Jay Richter**  
Vice President  
916.751.3609  
jrichter@kiddermathews.com  
Lic #01305696

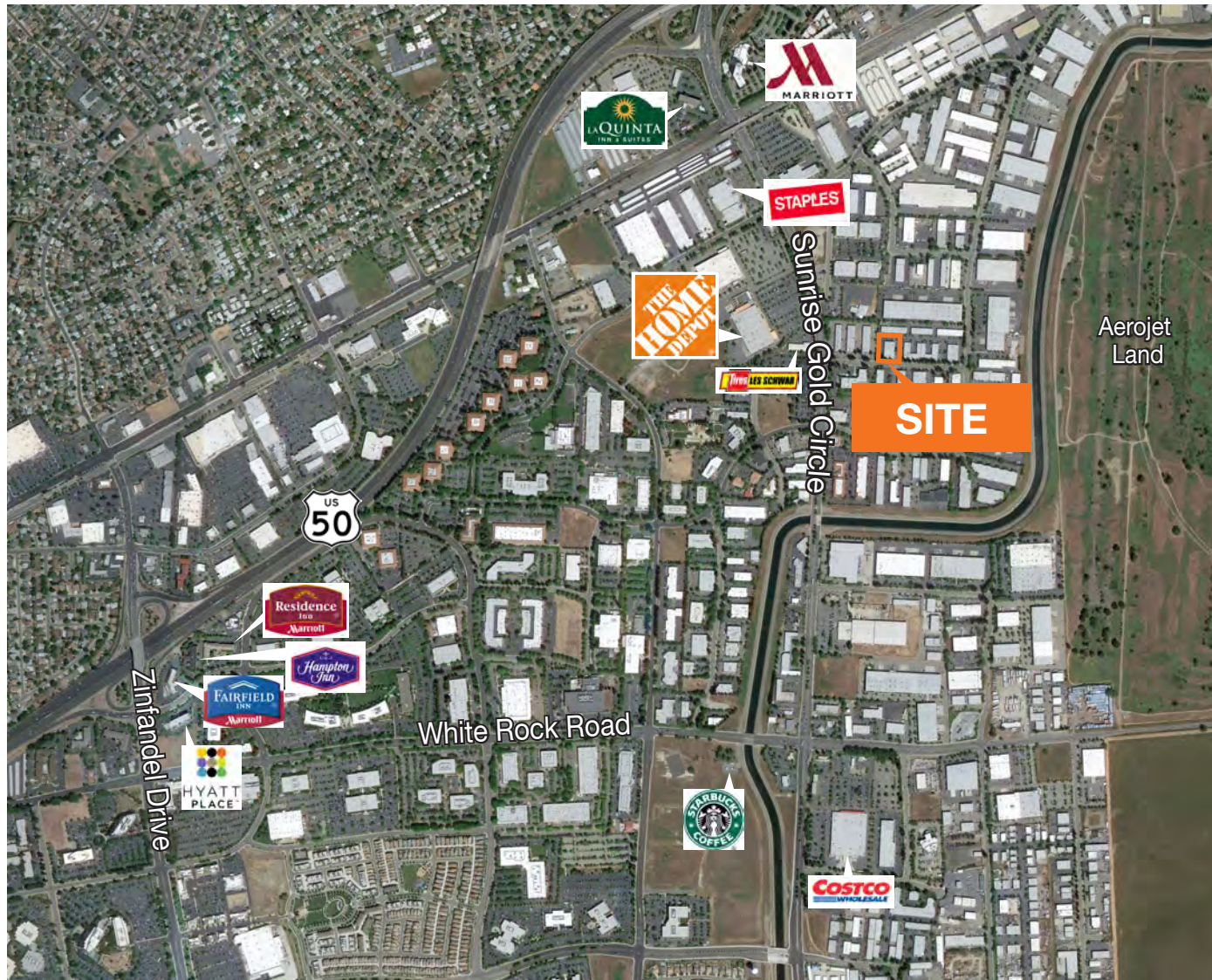




# FOR LEASE

# 11285 Sunrise Gold Circle

## AREA MAP



## CONTACT

**Jay Richter**  
Vice President  
916.751.3609  
jrichter@kiddermathews.com  
Lic #01305696

