



10621 N. May Avenue

Oklahoma City, Oklahoma 73120

PROPERTY HIGHLIGHTS

- Nice Shopping Center
- 2 Curb Cuts on North May Avenue
- Near Intersection of May Road & Hefner Road
- Good Mix of Retail Tenants
- Separately Metered

LOCATION HIGHLIGHTS

- Dimension: Irregular
- Frontage: 225' on May Avenue
- High Traffic Retail Area
- New OnCue at Hefner & May
- New Retail & Uptown Grocery just to the South on May

TOTAL SF	13,123 SF MOL
TOTAL ACRES	1.04 Acres MOL
ZONING	C-3
GENERAL USE	Retail
TAXES	\$4,970
YEAR BUILT	1985

www.naisullivangroup.com

Irmon Gray

Cell: 1 405 474 7286

irmon@naisullivangroup.com

4045 N.W. 64th Street, Suite 340

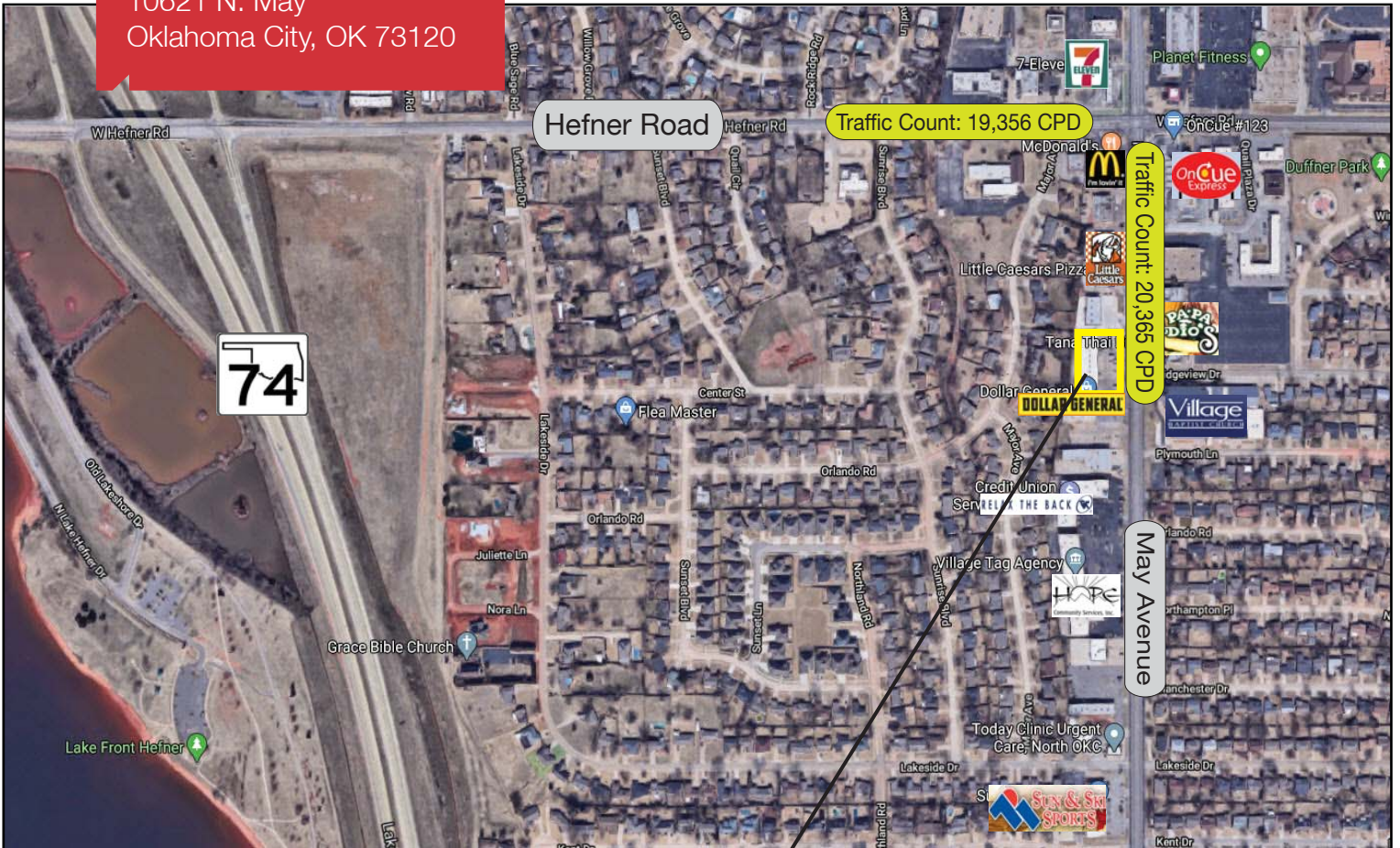
Oklahoma City, Oklahoma 73116

Office: 1 405 840 0600

Fax: 1 405 840 0610

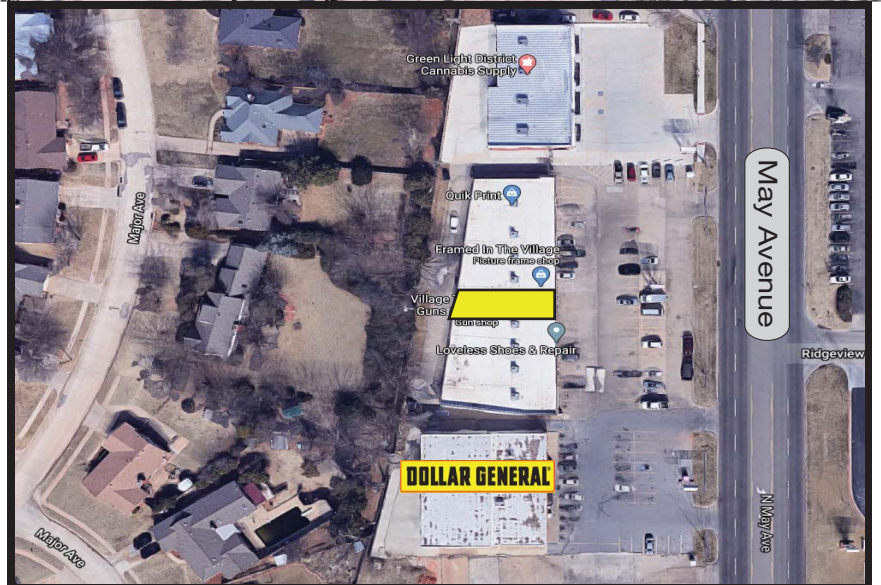
NO WARRANTY OR REPRESENTATION, EXPRESS OR IMPLIED, IS MADE AS TO THE ACCURACY OF THE INFORMATION CONTAINED HEREIN, AND THE SAME IS SUBMITTED SUBJECT TO ERRORS, OMISSIONS, CHANGE OF PRICE, RENTAL OR OTHER CONDITIONS, PRIOR SALE, LEASE OR FINANCING, OR WITHDRAWAL WITHOUT NOTICE, AND OF ANY SPECIAL LISTING CONDITIONS IMPOSED BY OUR PRINCIPALS NO WARRANTIES OR REPRESENTATIONS ARE MADE AS TO THE CONDITION OF THE PROPERTY OR ANY HAZARDS CONTAINED THEREIN ARE ANY TO BE IMPLIED.

10621 N. May
Oklahoma City, OK 73120



DEMOGRAPHICS

Population		
1 Mile: 10,339	3 Mile: 68,320	5 Mile: 191,622
Average Household Income		
1 Mile: \$63,416	3 Mile: \$53,455	5 Mile: \$58,014
Total Households		
1 Mile: 4,928	3 Mile: 32,186	5 Mile: 85,470



Irmon Gray

Cell: 1 405 474 7286

irmon@naisullivangroup.com

www.naisullivangroup.com

NAISullivan Group

4045 N.W. 64th Street, Suite 340

Oklahoma City, Oklahoma 73116

Office: 1 405 840 0600

Fax: 1 405 840 0610