

# The Highline Building



Newmark Grubb  
Knight Frank  
Retail

[www.ngkf.com/retail](http://www.ngkf.com/retail)

**450**  
WEST 14TH STREET



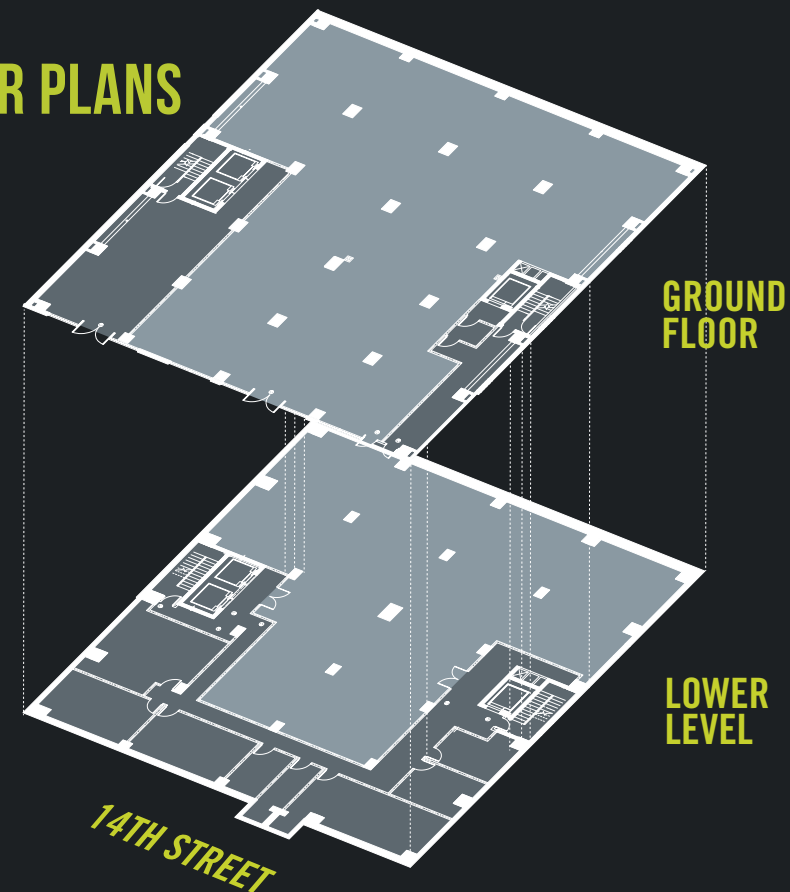


75 FEET OF FRONTAGE

### HIGHLIGHTS:

- 7,636 SQUARE FEET ON THE GROUND FLOOR
- 4,308 SQUARE FEET IN THE LOWER LEVEL
- LOCATED AT THE BASE OF THE HIGHLINE
- UNLIMITED SIGNAGE AND BRANDING
- 23 FOOT CEILINGS THROUGHOUT THE SPACE
- GENEROUS COLUMN SPACING
- 75 FEET OF FRONTAGE ON WEST 14TH STREET

### FLOOR PLANS





**23 FOOT CEILING**



**450**  
WEST 14TH STREET

**23 FOOT CEILING**



# MAXIMUM SIGNAGE OPPORTUNITY

LOCATED ONE BUILDING OUTSIDE OF THE HISTORIC DISTRICT, **450 WEST 14TH STREET** IS NOT LIMITED BY THE SAME RESTRICTIONS THAT GOVERN THE REST OF THE AREA. FLY YOUR **FLAG ABOVE YOUR STORE** AND BRAND THE TOP OF THE BUILDING FOR **MAXIMUM EXPOSURE AND VISIBILITY** FROM 9TH AVENUE.

## VIEW OF SIGNAGE FROM



WASHINGTON ST AND 14TH ST



9TH AVE AND 14TH ST

# 450

WEST 14TH STREET

## NEIGHBORHOOD

6.3 MILLION VISIT THE HIGHLINE ANNUALLY • OVER 5 MILLION SQUARE FEET OF OFFICE SPACE • 1,742 HOTEL ROOMS • 11.2 MILLION RIDERSHIP AT THE 14TH STREET **A C E L** SUBWAY STATION • 1,600 PEDESTRIANS PER HOUR IN GANSEVOORT PLAZA • 10.5 MILLION VISIT THE CHELSEA MARKET ANNUALLY • 2.6 MILLION ESTIMATED SQUARE FEET OF NEW DEVELOPMENT

### EXCLUSIVE AGENTS:

**MATTHEW S. KRELL** SENIOR MANAGING DIRECTOR  
212.372.2254 MKRELL@NGKF.COM

**THOMAS M. CITRON** EXECUTIVE MANAGING DIRECTOR  
212.372.2461 TCITRON@NGKF.COM

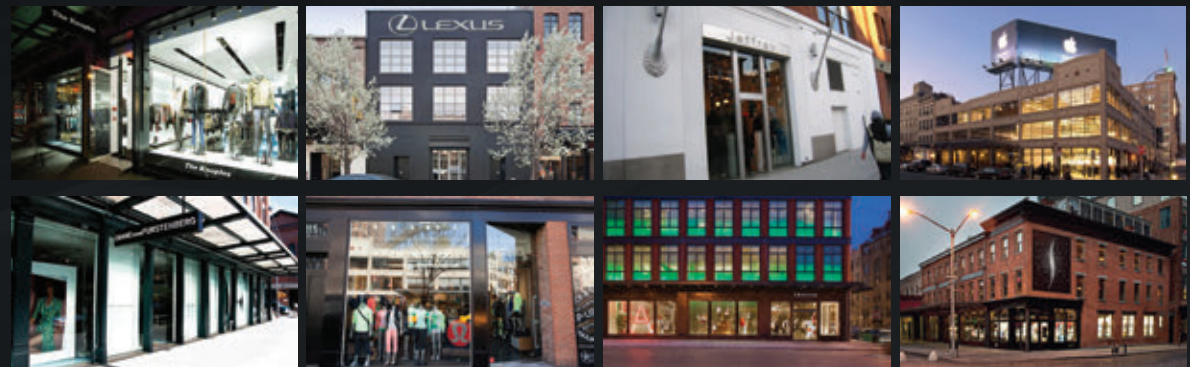
**GINA DINAPOLI** ASSOCIATE  
212.850.5463 GDINAPOLI@NGKF.COM

**NOAH BIRNBAUM** ASSOCIATE  
212.372.2483 NBIRNBAUM@NGKF.COM

**ETHAN BERENZWEIG** ASSOCIATE  
212.372.0739 EBERENZWEIG@NGKF.COM



## NEIGHBORING TENANTS



**Newmark Grubb  
Knight Frank**  
Retail

[www.ngkf.com/retail](http://www.ngkf.com/retail)



The information contained herein has been obtained from sources deemed reliable but has not been verified and no guarantee, warranty or representation, either express or implied, is made with respect to such information. Terms of sale or lease and availability are subject to change or withdrawal without notice.