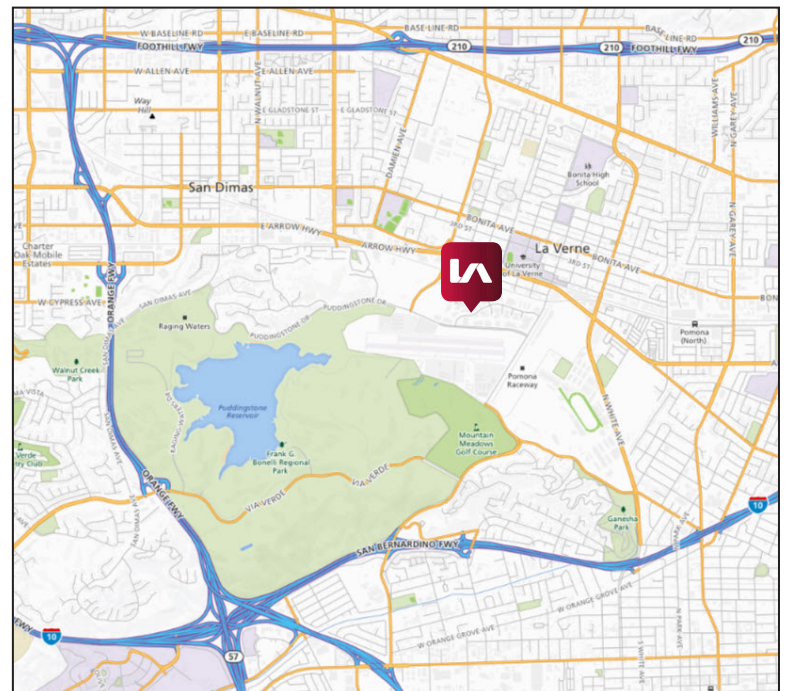


±13,714 SF Available for Lease
SAN POLO BUSINESS PARK
1773 Wright Ave., La Verne, CA. 91750



- Excellent Corporate Headquarters
- Located in San Polo Business Park
- ±13,714 SF of 2-Story Office Space
- Potential to be used as Assembly or R&D
- 400 Amps, 277/480 Volts
- Great Freeway Access to the I-10, CA-210 and CA-57 Freeways

Additional ±12,542 SF of Warehouse & Fenced Yard Also Available

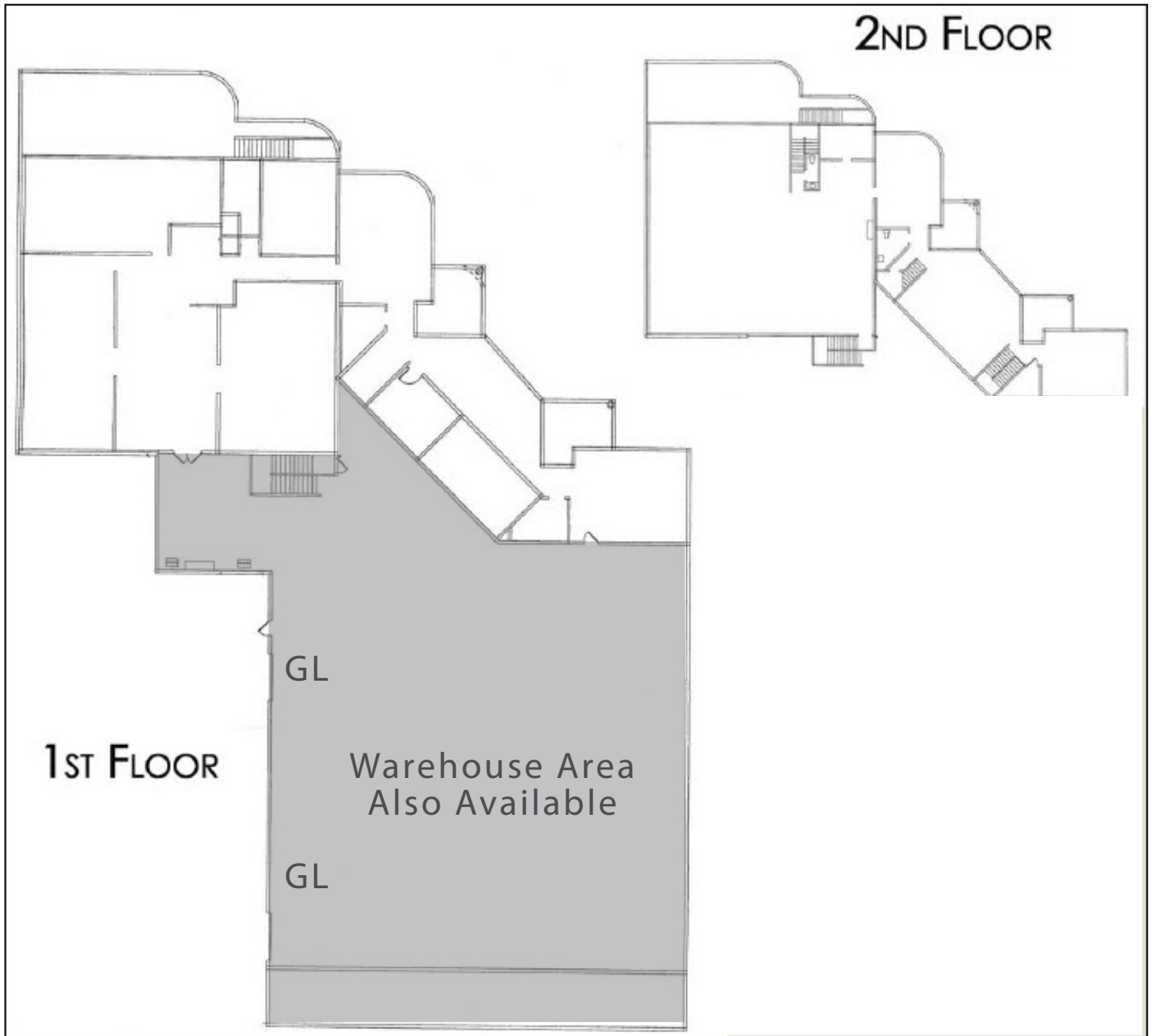


TODD LAUNCHBAUGH
tlaunchbaugh@lee-assoc.com
D 909.373.2911
License No. 01059250

JUSTIN LEWOOD
jleewood@lee-assoc.com
D 909.373.2989
License No. 01837452

All information furnished regarding property for sale, rental or financing is from sources deemed reliable, but no warranty or representation is made to the accuracy thereof and same is submitted to errors, omissions, change of price, rental or other conditions prior to sale, lease or financing or withdrawal without notice. No liability of any kind is to be imposed on the broker herein.

±13,714 SF Available for Lease
SAN POLO BUSINESS PARK
1773 Wright Ave., La Verne, CA. 91750



TODD LAUNCHBAUGH

tlaunchbaugh@lee-assoc.com

D 909.373.2911

License No. 01059250

JUSTIN LEEWOOD

jleewood@lee-assoc.com

D 909.373.2989

License No. 01837452