



**COLDWELL
BANKER
COMMERCIAL**

EMMCO REALTY GROUP

FOR LEASE

RICHMOND HIGHLAND PLAZA

Price Upon Request

468 Richmond Road
Richmond Heights, OH 44143

AVAILABLE SPACE
1,117 SF



EMMCOREALTYGROUP.COM



Jeffrey Soclof, CCIM

President and Broker

O: 216 292 3700 | C: 216 857 2075

jeffrey@emmcorealtygroup.com

©2020 Coldwell Banker. All Rights Reserved. Coldwell Banker and the Coldwell Banker Commercial logos are trademarks of Coldwell Banker Real Estate LLC. The Coldwell Banker® System is comprised of company owned offices which are owned by a subsidiary of Realogy Brokerage Group LLC and franchised offices which are independently owned and operated. The Coldwell Banker System fully supports the principles of the Equal Opportunity Act.

**COLDWELL BANKER COMMERCIAL
EMMCO REALTY GROUP**

3681 S. Green Road, Suite 201, Beachwood, OH 44122
216.292.3700



RICHMOND HIGHLAND PLAZA

468 Richmond Road, Richmond Heights, OH 44143



PROPERTY DESCRIPTION

Built out barber/salon space available for lease.

LOCATION DESCRIPTION

- Richmond Town Square Mall Renovation underway just half mile south of the Richmond Highland Plaza.
- Former Sears/Macy's Anchored mall is under new ownership.
- 23 acres is being developed into a \$70 Million four-story, 375-unit Class A luxury apartment complex and mixed use retail including a 98 suite hotel.
- Former Macy's is being redeveloped into a CubeSmart self-storage in addition to 30,000 square feet of retail and restaurant space.

PROPERTY HIGHLIGHTS

- Densely populated submarket
- Minutes away from Cuyahoga County Airport
- 20 Minutes to Downtown Cleveland
- 30 minutes to Cleveland Hopkins International Airport

EMMCOREALTYGROUP.COM

Jeffrey Soclof, CCIM
President and Broker
O: 216 292 3700 | C: 216 857 2075
jeffrey@emmcorealtygroup.com



**COLDWELL
BANKER
COMMERCIAL**

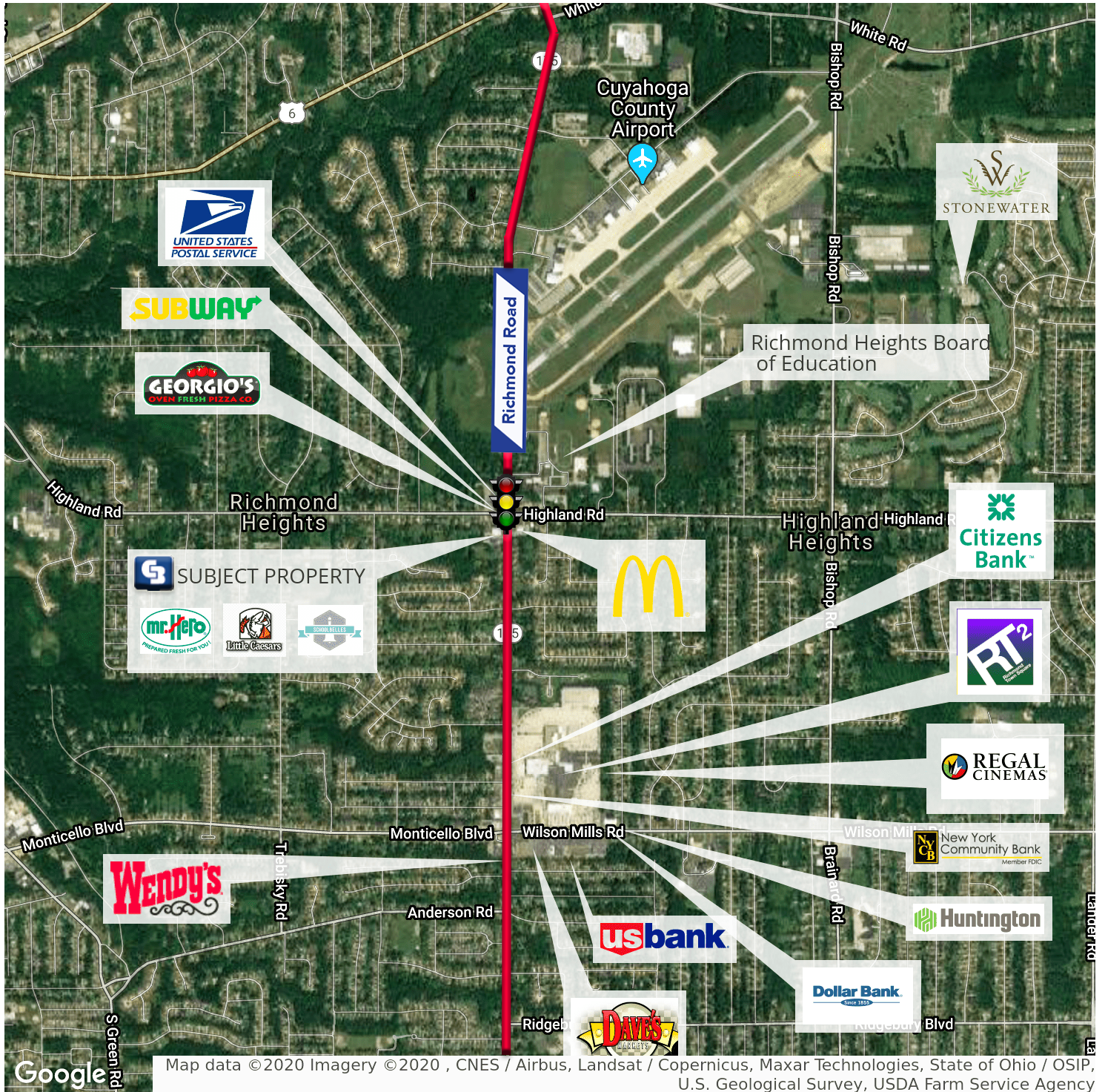
EMMCO REALTY GROUP



RICHMOND HIGHLAND PLAZA

468 Richmond Road, Richmond Heights, OH 44143

LEASE



EMMCOREALTYGROUP.COM

Jeffrey Soclof, CCIM
 President and Broker
 O: 216 292 3700 | C: 216 857 2075
 jeffrey@emmcorealtygroup.com

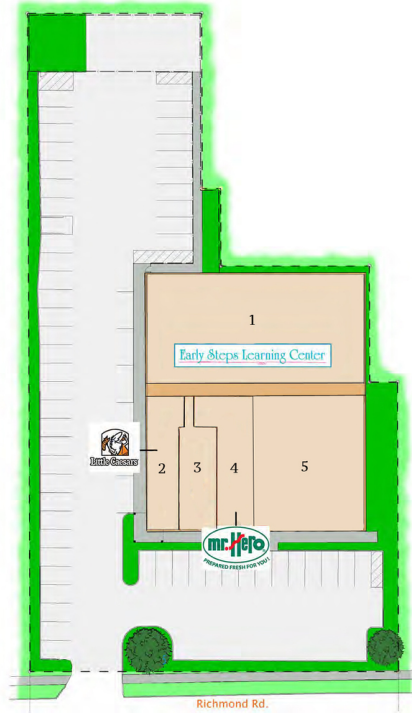


EMMCO REALTY GROUP



RICHMOND HIGHLAND PLAZA

468 Richmond Road, Richmond Heights, OH 44143



AVAILABLE SPACES

SUITE	TENANT	SIZE (SF)	LEASE TYPE
1	Early Steps Learning Center	8,428 SF	Gross
2	Little Ceasar's	1,573 SF	NNN
3	Available	1,117 SF	Gross
4	Mr. Hero	1,305 SF	NNN
5	Schoolbelles	4,468 SF	Gross

EMMCOREALTYGROUP.COM

Jeffrey Soclof, CCIM
 President and Broker
 O: 216 292 3700 | C: 216 857 2075
 jeffrey@emmcorealtygroup.com



RADIUS: 5 MILES

468 Richmond Road, Richmond Heights, OH 44143

KEY FACTS

229,519

Population



Average Household Size



43.8

Median Age

\$48,897

Median Household Income

EDUCATION



No High School Diploma



26%

High School Graduate



30%

Some College



35%

Bachelor's/Grad/Pr of Degree

BUSINESS



6,636

Total Businesses



103,969

Total Employees

EMPLOYMENT



68%

White Collar



17%

Blue Collar



16%

Services



Unemployment Rate

INCOME



\$48,897

Median Household Income



\$31,854

Per Capita Income



\$69,683

Median Net Worth

Households By Income

The largest group: \$50,000 - \$74,999 (16.8%)

The smallest group: \$200,000+ (4.2%)

Indicator	Value	Difference	
<\$15,000	14.5%	-1.2%	
\$15,000 - \$24,999	11.0%	+0.3%	
\$25,000 - \$34,999	10.9%	+0.1%	
\$35,000 - \$49,999	14.4%	+1.0%	
\$50,000 - \$74,999	16.8%	+0.7%	
\$75,000 - \$99,999	11.9%	+0.5%	
\$100,000 - \$149,999	11.9%	-0.3%	
\$150,000 - \$199,999	4.4%	0	
\$200,000+	4.2%	-1.0%	

Bars show deviation from Cuyahoga County

This infographic contains data provided by Esri, Esri and Infogroup. The vintage of the data is 2019, 2024.

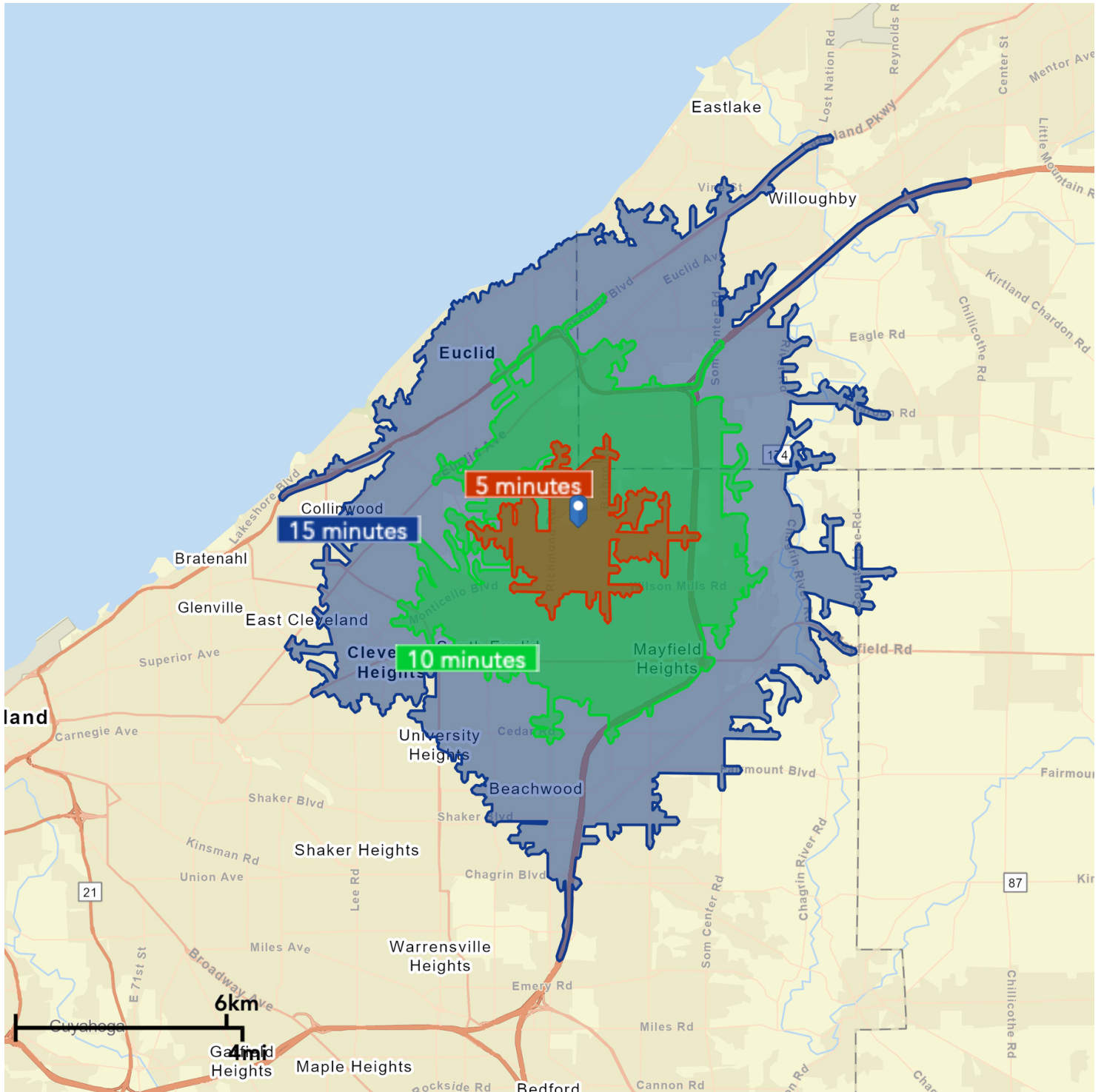
© 2020 Esri





DEMOGRAPHICS: DRIVE TIMES 5, 10, 15 MINUTES

468 Richmond Road, Richmond Heights, OH 44143



EMMCOREALTYGROUP.COM

Jeffrey Soclof, CCIM
 President and Broker
 O: 216 292 3700 | C: 216 857 2075
 jeffrey@emmcorealtygroup.com



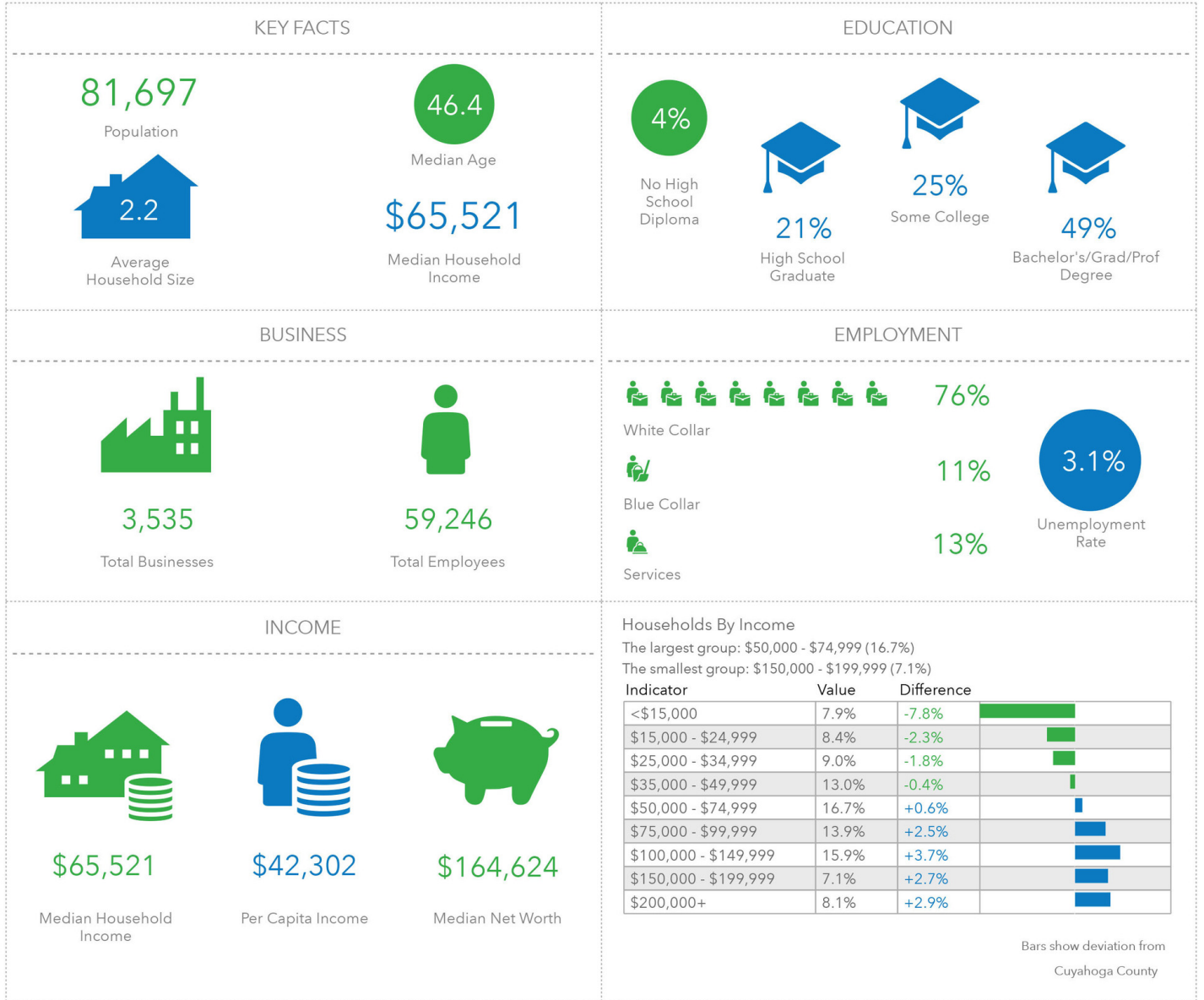
**COLDWELL
 BANKER
 COMMERCIAL**

EMMCO REALTY GROUP



DRIVE TIMES: 10 MINUTES

468 Richmond Road, Richmond Heights, OH 44143



EMMCOREALTYGROUP.COM

Jeffrey Soclof, CCIM
 President and Broker
 O: 216 292 3700 | C: 216 857 2075
 jeffrey@emmcorealtygroup.com