

# FLORIDA COASTAL PROFESSIONAL CENTER

## NAPLES FLORIDA



### AVAILABLE FOR LEASE

#### UNIT 300

5,976 SQ. FT.

\$18/ SQ. FT.

\$6.50CAM

COVERED PARKING:

\$30-\$50/MONTH

FOR MORE INFORMATION:

**LISA PAUL**

T: 239.596.9500

E: [LISA@AJSREALTYGROUP.COM](mailto:LISA@AJSREALTYGROUP.COM)

**ANDREW J. SALUAN**

T: 239.596.9500

E: [ANDREW@AJSREALTYGROUP.COM](mailto:ANDREW@AJSREALTYGROUP.COM)

[WWW.AJSREALTYGROUP.COM](http://WWW.AJSREALTYGROUP.COM)



INVESTMENT  
DEVELOPMENT  
LEASING  
MANAGEMENT

**FLORIDA COASTAL PROFESSIONAL CENTER**

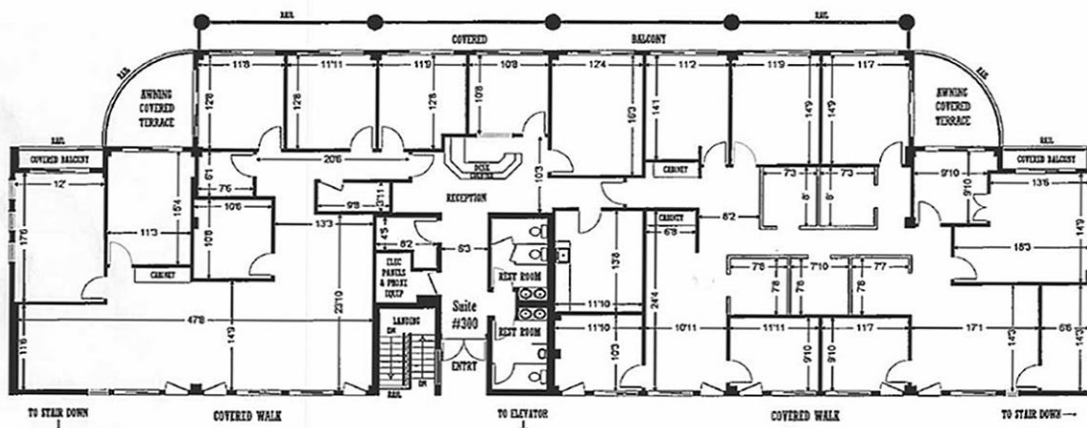
801 ANCHOR RODE DR

NAPLES, FL 34103

2950 IMMOKALEE ROAD, SUITE 2 - NAPLES, FL 34110

# FLORIDA COASTAL PROFESSIONAL CENTER

## NAPLES FLORIDA



Suite #300  
Gross Leasable Area  
5976 Sq Ft  
All sizes deemed reliable, but not guaranteed.  
FLOORPLAN SERVICES

**FLORIDA COASTAL  
Professional Center**  
801 Anchor Rode  
Naples, Florida

### AVAILABLE FOR LEASE

**UNIT 300**  
5,976 SQ. FT.

\$18/ SQ. FT.  
\$6.50CAM

COVERED PARKING:  
\$30-\$50/MONTH

### PROPERTY HIGHLIGHTS:

- SEVERAL SIZES AND LAYOUT OPTIONS
- WEST OF US 41 ( CITY OF NAPLES )
- LOCAL OWNERS
- COVERED PARKING AVAILABLE
- BEAUTIFUL LUSH LANDSCAPING
- PROFESSIONALLY MANAGED
- POTENTIAL MEDICAL SPACE AVAILABLE
- CONVENIENT ELEVATOR ACCESS TO UPPER FLOORS

FOR MORE INFORMATION:

**LISA PAUL**  
T: 239.596.9500  
E: LISA@AJSREALTYGROUP.COM

**ANDREW J. SALUAN**  
T: 239.596.9500  
E: ANDREW@AJSREALTYGROUP.COM

WWW.AJSREALTYGROUP.COM



INVESTMENT  
DEVELOPMENT  
LEASING  
MANAGEMENT

2950 IMMOKALEE ROAD , SUITE 2 - NAPLES, FL 34110

