

9414 E SAN SALVADOR

9414 E San Salvador | Scottsdale, Arizona



TOTAL BUILDING AVAILABLE: ±9,792 SF

Chris Jantz

Director
+1 602 224 4485
chris.jantz@cushwake.com

Gordon Raguse

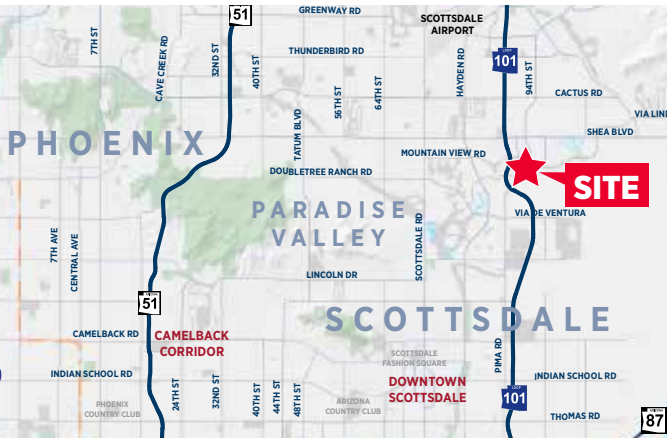
Managing Director
+1 602 224 4452
gordon.raguse@cushwake.com



Cushman & Wakefield Copyright 2019. No warranty or representation, express or implied, is made to the accuracy or completeness of the information contained herein, and same is submitted subject to errors, omissions, change of price, rental or other conditions, withdrawal without notice, and to any special listing conditions imposed by the property owner(s). As applicable, we make no representation as to the condition of the property (or properties) in question.

9414 E SAN SALVADOR

9414 E San Salvador | Scottsdale, Arizona



PROPERTY FEATURES

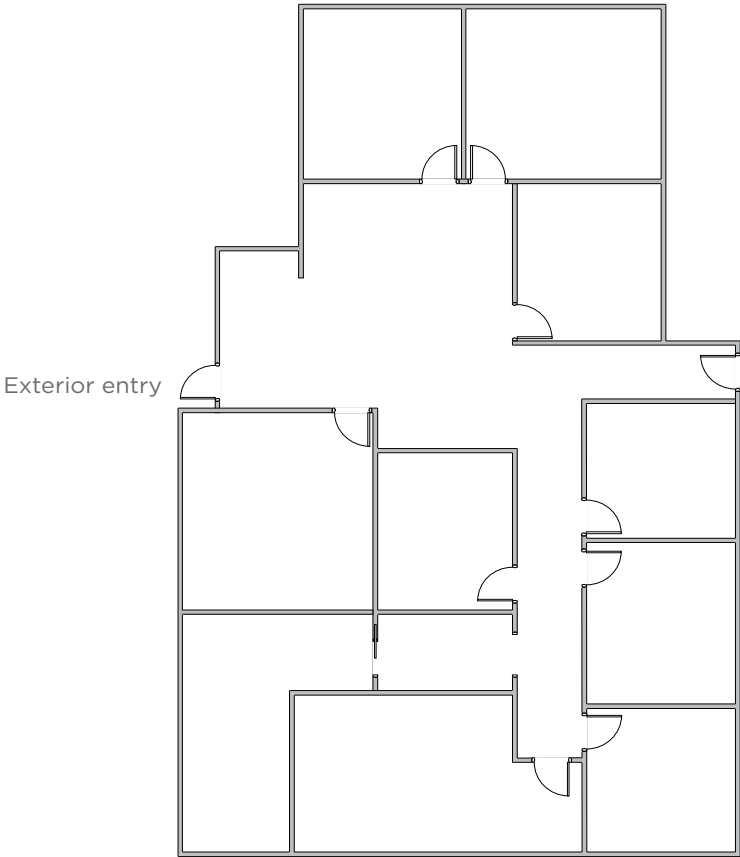
- Recent common area remodel
- Close proximity to Honor Health Shea Campus
- 5.4/1000 parking ratio - 30% covered reserved
- Easy access to Loop 101
- On-site management



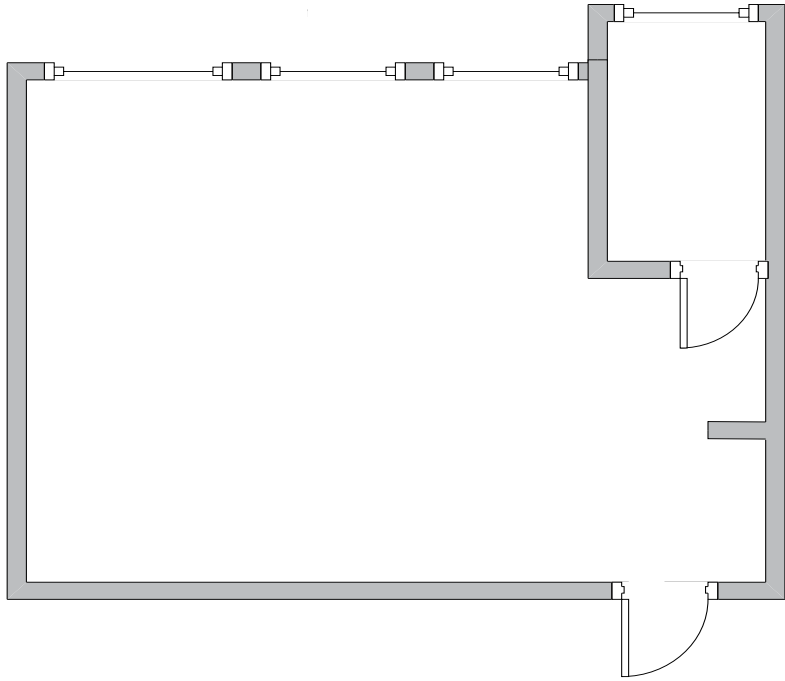
9414 E SAN SALVADOR

9414 E San Salvador | Scottsdale, Arizona

SUITE 150 ±2,110 RSF



SUITE 230 ±2,250 RSF



Chris Jantz
Director
+1 602 224 4485
chris.jantz@cushwake.com

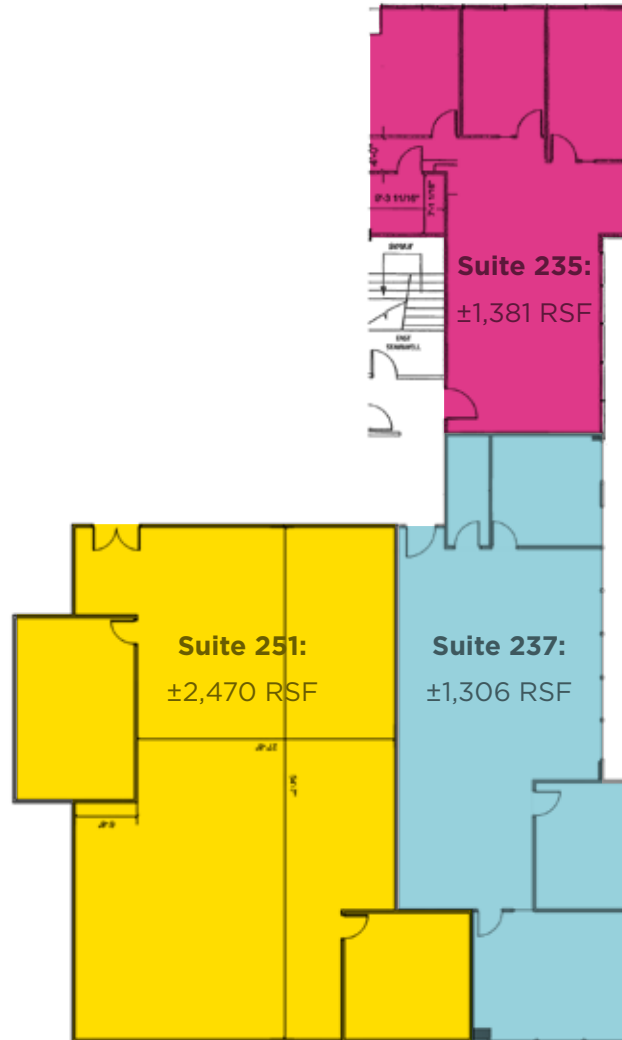
Gordon Raguse
Managing Director
+1 602 224 4452
gordon.raguse@cushwake.com






9414 E SAN SALVADOR

9414 E San Salvador | Scottsdale, Arizona

SECOND FLOOR COMBINED ±5,157 SF



-  Suite 235 ±1,381 RSF
 -  Suite 237 ±1,306 RSF
 -  Suite 251 ±2,470 RSF
-
- Contiguous ±5,157 RSF



Chris Jantz
Director
+1 602 224 4485
chris.jantz@cushwake.com

Gordon Raguse
Managing Director
+1 602 224 4452
gordon.raguse@cushwake.com

