



4060 Geigy Access Rd.

Saint Gabriel, Louisiana 70776

Property Highlights

- 13,600 SF industrial building for lease
- Building features 1,600 SF of office space, dock high and ground levels, a 20' eave and 3 phase electricity
- Located across the street from Berthelot's Truck Stop on the access road to the Ciba Geigy Plant
- Just off of Highway 30 between Highway 73 & 74
- Commercial/Industrial zoning
- Ideal location for companies servicing surrounding plants

Lease Rate

Contact Agent



For more information

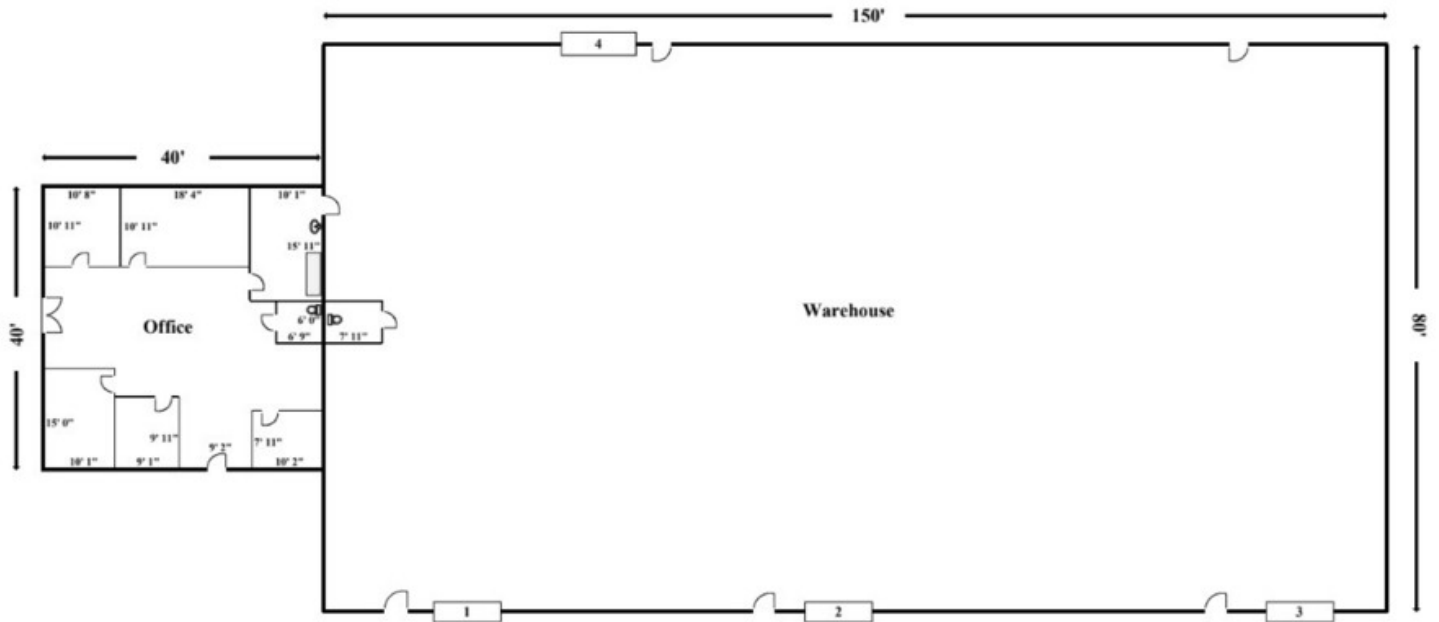
Bobby Smith

O: 225 297 7430 | C:
rsmith@latterblum.com

1700 City Farm Drive
Baton Rouge, LA 70806
225 295 0800 tel
latterblum.com

NO WARRANTY OR REPRESENTATION, EXPRESS OR IMPLIED, IS MADE AS TO THE ACCURACY OF THE INFORMATION CONTAINED HEREIN, AND THE SAME IS SUBMITTED SUBJECT TO ERRORS, OMISSIONS, CHANGE OF PRICE, RENTAL OR OTHER CONDITIONS, PRIOR SALE, LEASE OR FINANCING, OR WITHDRAWAL WITHOUT NOTICE, AND OF ANY SPECIAL LISTING CONDITIONS IMPOSED BY OUR PRINCIPALS NO WARRANTIES OR REPRESENTATIONS ARE MADE AS TO THE CONDITION OF THE PROPERTY OR ANY HAZARDS CONTAINED THEREIN ARE ANY TO BE IMPLIED. LICENSED IN LOUISIANA.

Warehouse & Floor Plan



Aerial View



30

30

E Hwy 30

Geigy Access Rd

Geigy Access Rd

Geigy Access Rd

S Rd

Google

Map data © 2019 Google Imagery © 2019 , DigitalGlobe, U.S. Geological Survey, USDA Farm Service Agency