

# PALM VALLEY CROSSING

6 NEW FREESTANDING INDUSTRIAL BUILDINGS FOR LEASE OR SALE

BREAKING GROUND 2ND QUARTER 2019



137TH AVENUE & AUTO DRIVE | GOODYEAR, ARIZONA 85338

ALLEN LOWE, SIOR  
602.954.3747  
alowe@leearizona.com

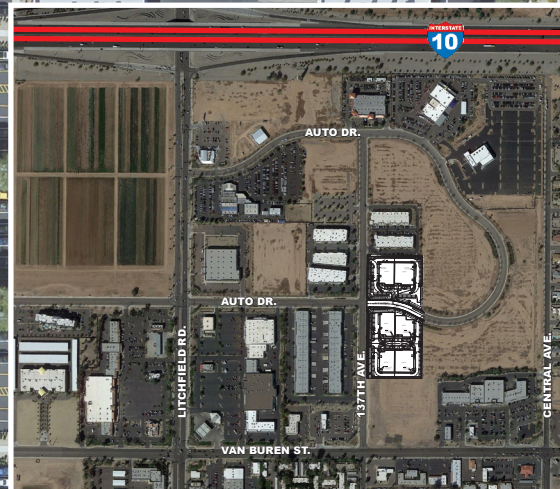
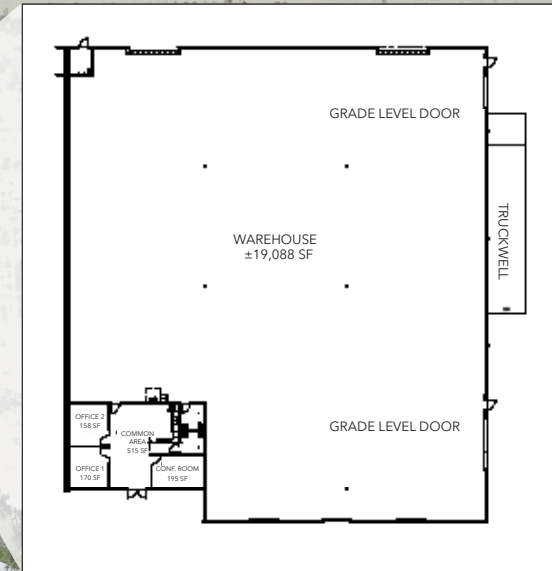
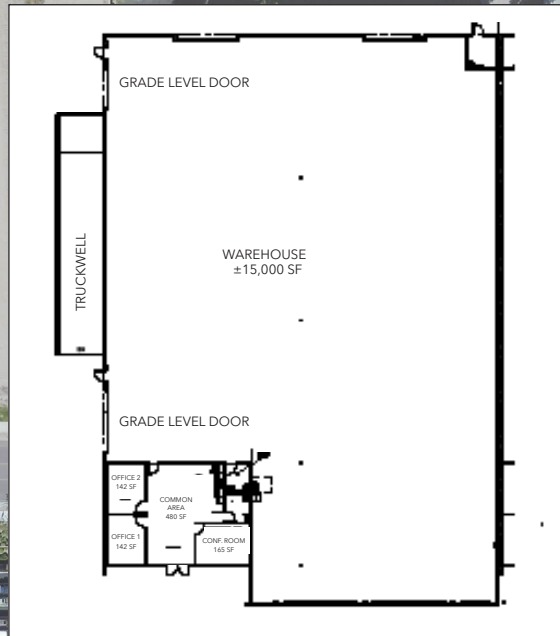
STEVE FARRELL  
602.954.3746  
sfarrell@leearizona.com

 LEE &  
ASSOCIATES  
COMMERCIAL REAL ESTATE SERVICES

DEVELOPED BY:

 Hopewell  
DEVELOPMENT

# PALM VALLEY CROSSING



## ALL BUILDINGS

- PAD Zoning
- Fenced Yards
- Truckwell/Grade Level Doors
- Roof Insulation: R-30
- 800 Amp Service
- 120/208 Panel
- 277/480 Panel
- 20'-8" Clear Height
- Wet Sprinkler System
- 5" Concrete Floor Slabs
- Each Unit Includes Built-out Office Space
- Full Diamond Interchange at Litchfield Rd & I-10