

291 S. Pine Street
Spartanburg, SC 29302

- 2500± sq.ft. to 6600± sq. ft. office space on S. Pine Street. Main level, lower level & upper level can be subdivided.
- Owner occupied; will continue to lease upper level if desired, or will vacate building for tenant.
- Large training room in lower level.
- 2 separate rear entrances
- Private courtyard off breakroom & kitchen.
- Stove, refrigerator and dishwasher in kitchen breakroom
- High quality finishes, palladium style windows & hardwood floors.
- Ally access to Norwood Street from rear parking lot.
- Highly visible location with over 22,000 cars per day
- Great location close to downtown, Mary Black Rail Trail and the YMCA.
- Includes FF&E
- New HVAC & windows
- 22 parks with parking in front and rear of building
- Zoned LOD – Limited Office District
- Spartanburg County Tax Map # 7-12-12-097

LEASE RATE:

6600 sq. ft.
(entire building- 3 floors)
\$12 sq. ft. Net, Net, Net

LEASE RATE:

4100 sq. ft.
(street level – 2500 sq. ft.
& lower level – 1600 sq. ft.)
\$12 sq. ft. Net, Net, Net



Andy Hayes 864-706-0189
ahayes@spencerhines.com



Ben Hines 864-542-4777
benhines@spencerhines.com



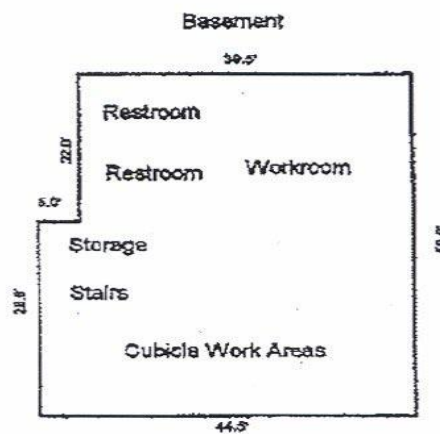
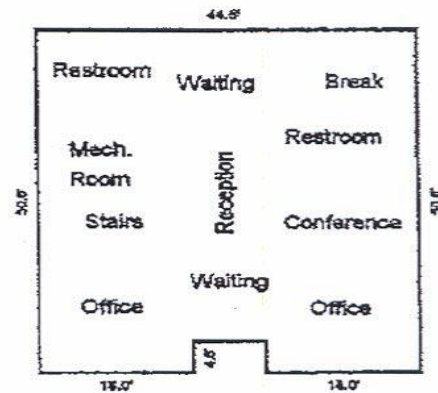
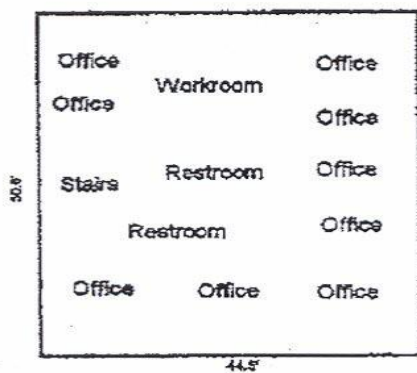
CONTACT

WWW.SPENCERHINES.COM

COMMERCIAL REAL ESTATE SALES, LEASING, & INVESTMENTS
380 S. Pine Street, Spartanburg, SC - 864.583.1001

No warranty or representation, expressed or implied, is made to the accuracy of the information contained herein, and the same is submitted subject to errors, omissions, change of price, rental or other conditions, imposed by the principles.

BUILDING SKETCH



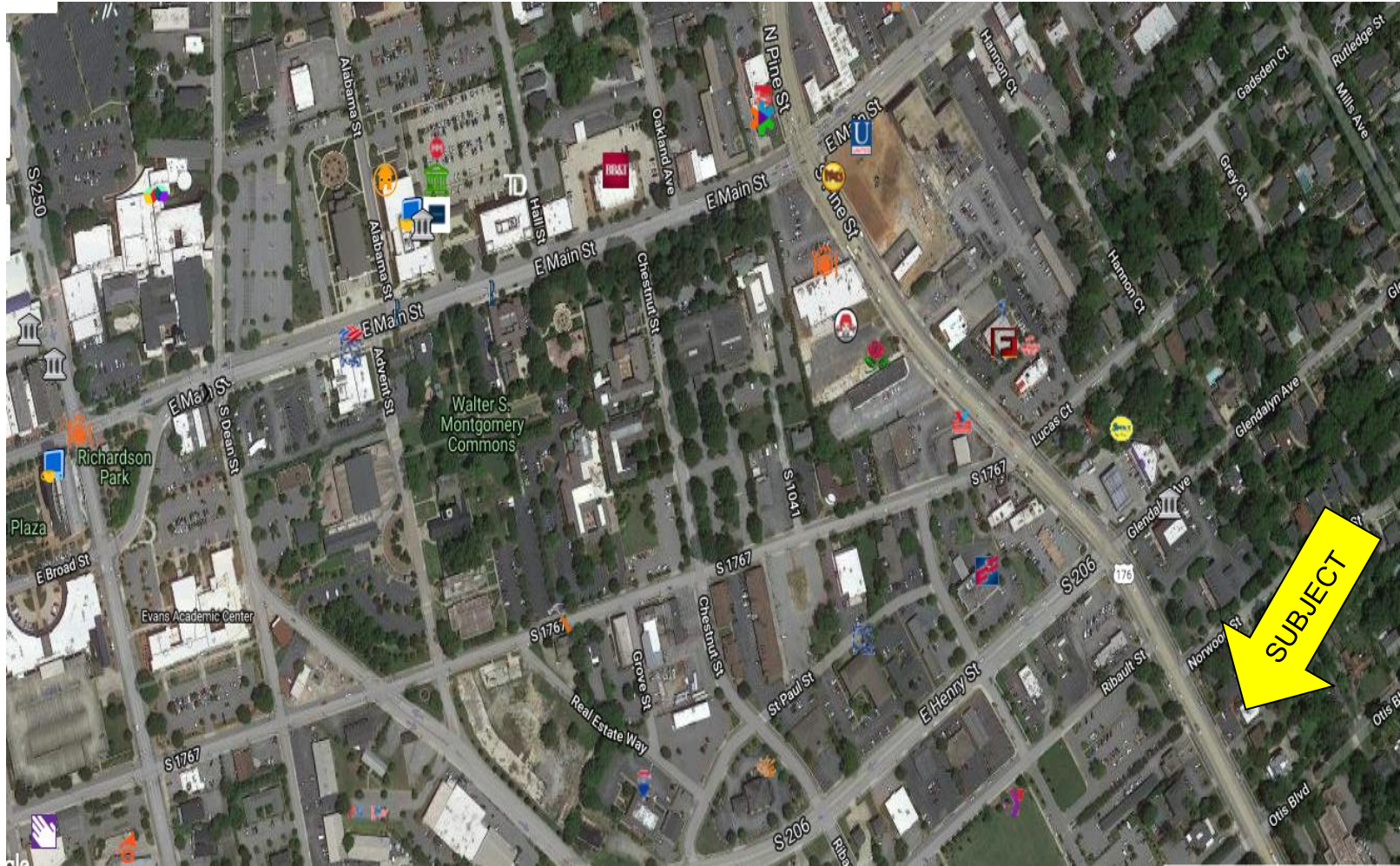
Andy Hayes 864-706-0189
ahayes@spencerhines.com

CoStar
POWERBROKER

CONTACT

Ben Hines 864-542-4777
benhines@spencerhines.com

CCIM CCIM Institute
COMMERCIAL REAL ESTATE



WWW.SPENCERHINES.COM

No warranty or representation, expressed or implied, is made to the accuracy of the information contained herein, and the same is submitted subject to errors, omissions, change of price, rental or other conditions, imposed by the principles.