



Dorsey Hall Professional Park

5300 Dorsey Hall Dr, Ellicott City, MD 21042



Randy Pinato

Northrop Realty Commercial Division
12230 Clarksville Pike, Clarksville, MD 21029

commercial@randyrealestate.net

(410) 531-0321

Dorsey Hall Professional Park

\$22.00 /SF/Yr

Very rich setting to compliment any professional service. Ample parking in and around the building. Retail services and restaurants .1/2 mile away. Route 29 is 2 miles from the office that connects Interstate 70 to the north and Route 32 to the south and Interstate 95....

- An appealing professional office setting.



Rental Rate: \$22.00 /SF/Yr

Property Type: Office

Building Class: B

Rentable Building Area: 19,976 SF

Year Built: 1989

Walk Score ®: 31 (Car-Dependent)

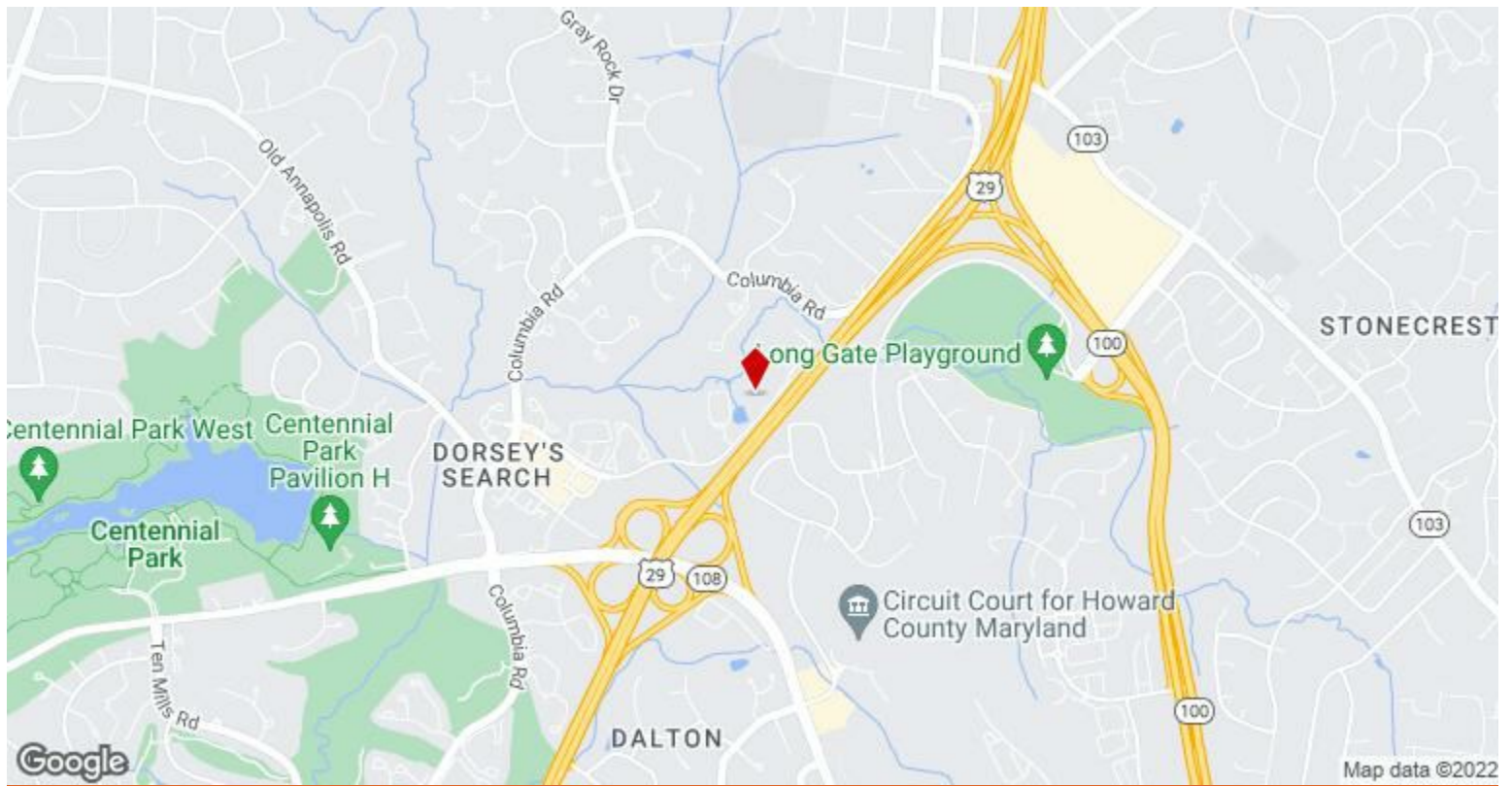
Transit Score ®: 26 (Some Transit)

Rental Rate Mo: \$1.83 USD/SF/Mo

2nd Floor

Space Available	1,477 SF
Rental Rate	\$22.00 /SF/Yr
Date Available	60 Days
Service Type	Modified Gross
Built Out As	Standard Office
Space Type	Relet
Space Use	Office
Lease Term	Negotiable

Newly refinished offices.



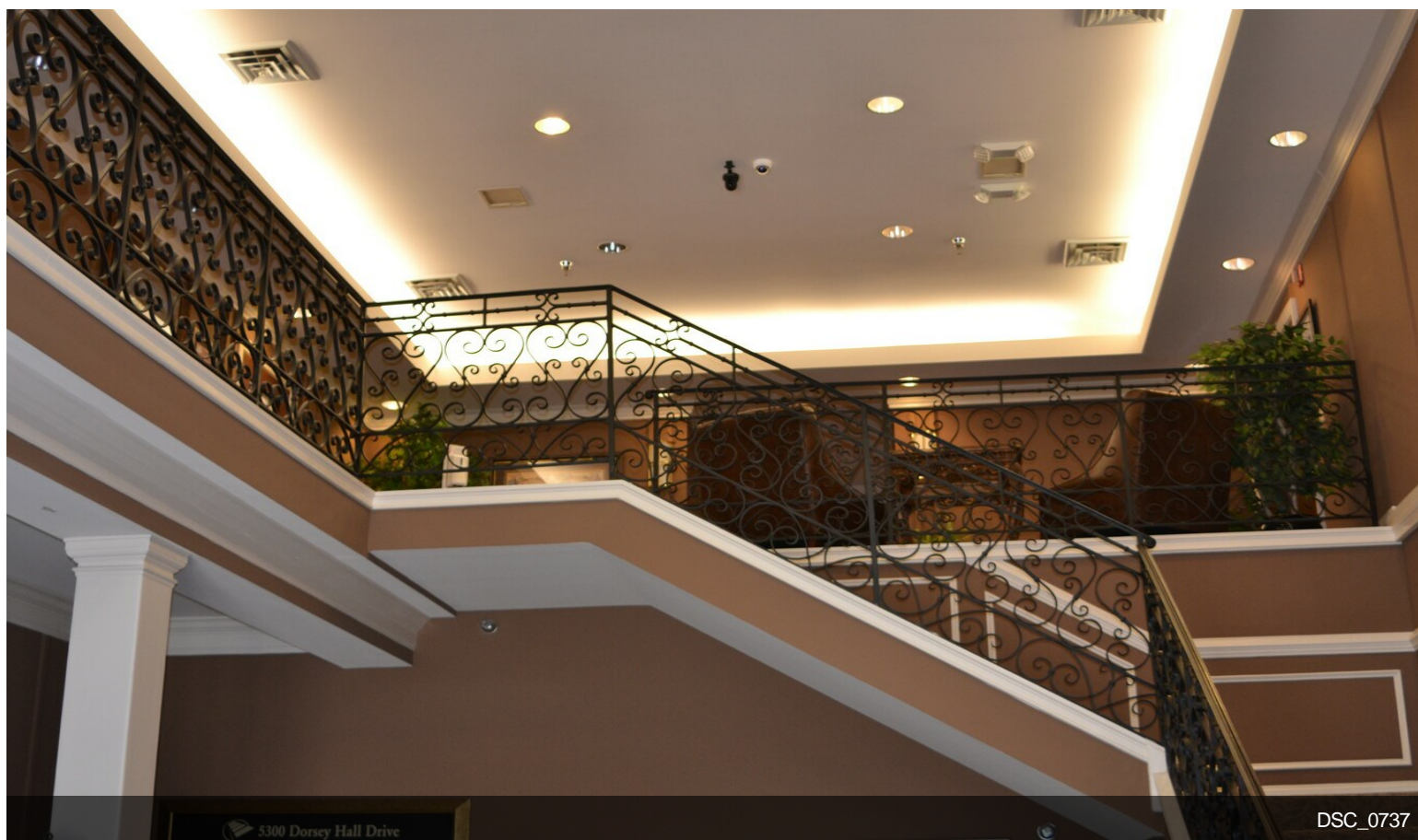
5300 Dorsey Hall Dr, Ellicott City, MD 21042

Very rich setting to compliment any professional service. Ample parking in and around the building. Retail services and restaurants .1/2 mile away. Route 29 is 2 miles from the office that connects Interstate 70 to the north and Route 32 to the south and Interstate 95.

Property Photos



DSC_0740



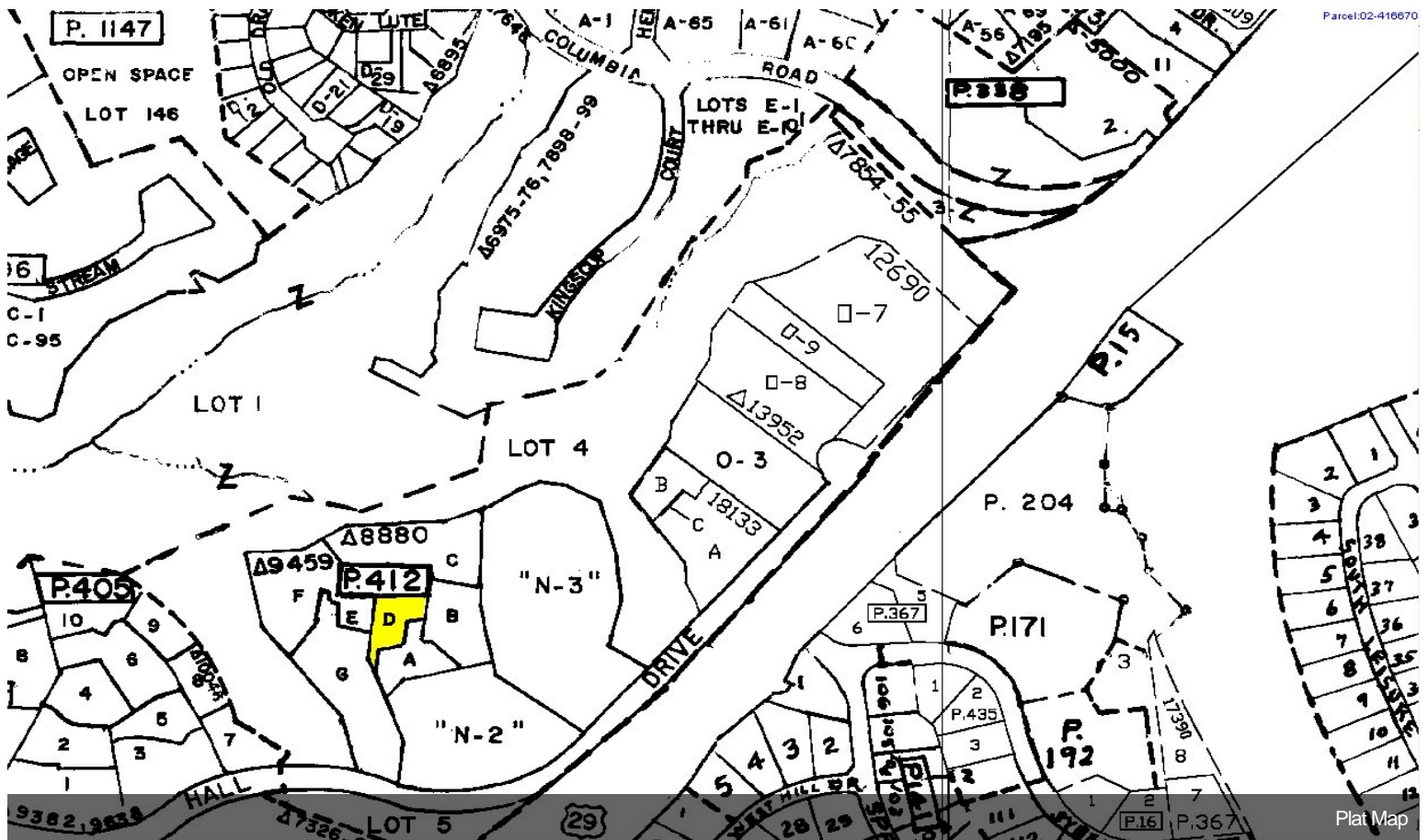
5300 Dorsey Hall Drive

DSC_0737

Property Photos



DSC_0739



Parcel:02-416670

Plat Map