

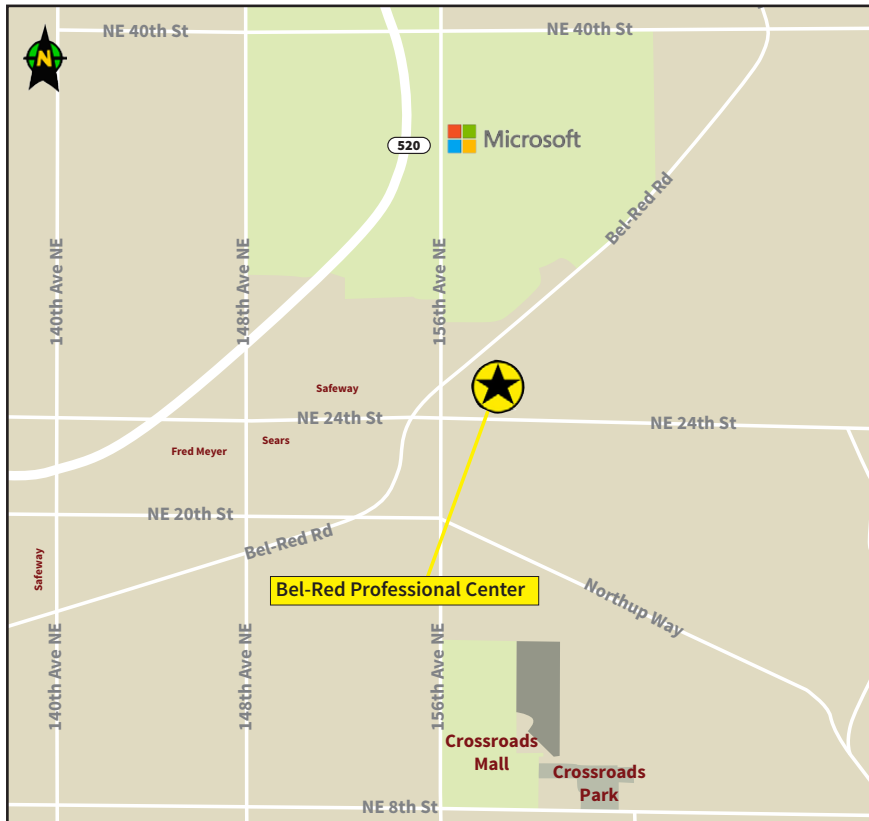
MEDICAL SPACE FOR LEASE



BEL-RED PROFESSIONAL CENTER

15611 Bel-Red Road | Bellevue, WA 98007

**CLOSE TO
MICROSOFT & NINTENDO
CAMPUSES**



AVAILABLE IMMEDIATELY:

- **BUILDING A**
 - Suite B 2,591 RSF
- Divisible to:
 - Suite B-1 2,073 RSF
 - Suite B-2 711 RSF
 - Suite B-3 1,362 RSF

RATE:

- \$25.00/RSF, FULL SERVICE

FEATURES:

- T.I. Allowance Available
- Basement Storage Units Available
- Quiet Medical Office Park Setting
- Close to Microsoft & Nintendo Campuses
- 5.0 Parking Stalls/1,000 RSF
- Building & Monument Signage Available
- Easy Access to SR-520, Redmond and Bellevue
- Amenities within Walking Distance
- **frontier** FiOS is Available



Dan Krekel, CCIM
dkrekel@leibsohn.com | (425) 586-4655



BEL-RED PROFESSIONAL CENTER

15611 Bel-Red Road | Bellevue, WA 98007

**MEDICAL SPACE
FOR LEASE**
Close to Microsoft Campus

Building A (Bolles Clinic Building)

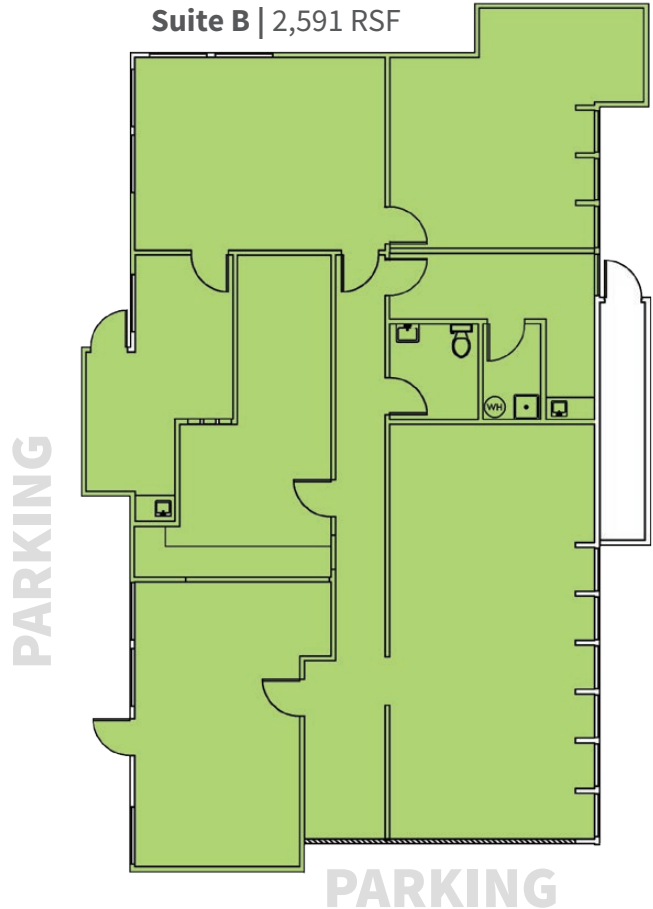


AVAILABLE IMMEDIATELY:

- **BUILDING A**
 - Suite B 2,591 RSF
- Divisible to:
 - Suite B-1 2,073 RSF
 - Suite B-2 711 RSF
 - Suite B-3 1,362 RSF

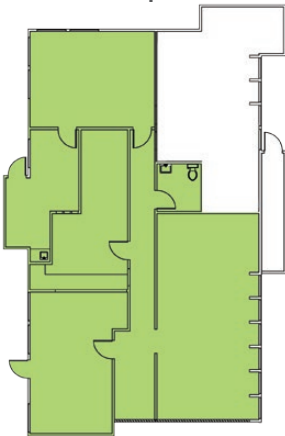
RATE:

- \$25.00/RSF, FULL SERVICE

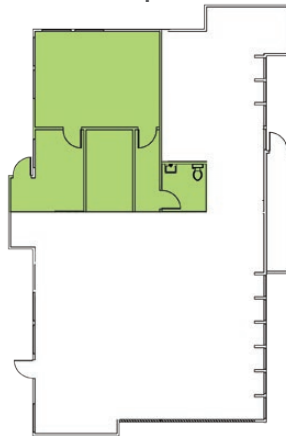


DIVISIBLE OPTIONS:

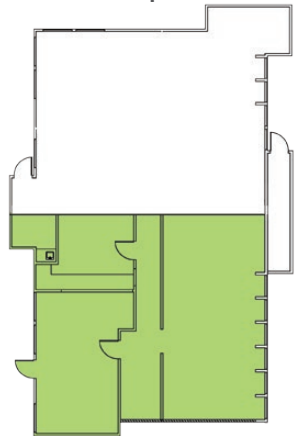
Suite B-1 | 2,073 RSF



Suite B-2 | 711 RSF



Suite B-3 | 1,362 RSF



Dan Krekel, CCIM
dkrekel@leibsohn.com | (425) 586-4655

