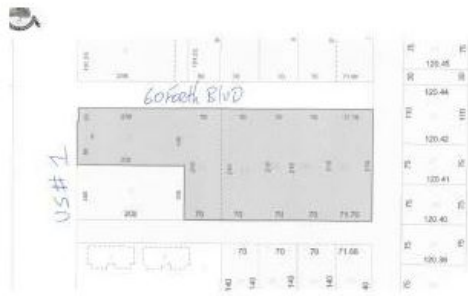


SALE

**\$365,000**  
**Vacant Land**  
**2.2 AC**

6490 Hwy 1  
Port Saint Lucie, FL 34952 US



<b>Property Type:</b>	Vacant Land
<b>Tax Year:</b>	2017
<b>Listing ID:</b>	CMWX2T
<b>MLS ID:</b>	RX-10437270
<b>Additional MLS:</b>	RX-10437270
<b>Style:</b>	Other Style
<b>Lot Size:</b>	2.2 AC



6490 Hwy 1 Port Saint Lucie FL, 34952 US

**Online Profile** <http://www.cbcworldwide.com/properties/profile/CMWX2T-PortSaintLucie-FL>

## Property Description

OWNER WANTS IMMEDIATE SALE OF THIS COMMERCIAL 2.2 ACRE PARCEL FRONTING SOUTH US 1 JUST NORTH OF KITTERMAN ROAD. 551.78 FEET FRONTING GOFORTH BLVD. MANY POTENTIAL USES. ADDRESS USED IS NOT ACTUAL, USED FOR LOCATION PURPOSES. THIS IS A GREAT LOCATION AND A TERRIFIC BUY AT THIS PRICE!

## Additional Features

**Taxes:** \$5,943

**Mark Tierney**

flexcrush21@hotmail.com

**Direct** 772-370-4428

**Mobile** 772-370-4428



<http://www.cbc.flcoldwellbanker.com/>  
772-460-2081

Paradise  
411 North US Highway 1  
Fort Pierce, FL 34950

© 2019 Coldwell Banker Real Estate LLC, dba Coldwell Banker Commercial Affiliates. All Rights Reserved. Coldwell Banker Real Estate LLC, dba Coldwell Banker Commercial Affiliates fully supports the principles of the Equal Opportunity Act. Each Office is Independently Owned and Operated. Coldwell Banker Commercial and the Coldwell Banker Commercial Logo are registered service marks owned by Coldwell Banker Real Estate LLC, dba Coldwell Banker Commercial Affiliates. Each sales representative and broker is responsible for complying with any consumer disclosure laws or regulations.

The information provided is deemed reliable, but it is not guaranteed to be accurate or complete, and it should not be relied upon as such. This listing information should be independently verified before any person enters into a transaction based upon it.