

437 NW MURRAY ROAD
LEE'S SUMMIT, MISSOURI 64063

FOR LEASE | 2,185± SF AVAILABLE

Former Bushnell Space

PROPERTY FEATURES

- Excellent US 50 Highway signage and visibility
- Traffic count of 63,494 CPD along US 50 Highway
- Strong demographics and population
- Immediate occupancy

DEMOGRAPHICS	2 MILES	3 MILES	5 MILES
ESTIMATED POPULATION	24,846	44,821	95,637
EST. HOUSEHOLDS	10,633	18,444	37,178
EST. HOUSEHOLD INCOME	\$81,882	\$87,582	\$90,476



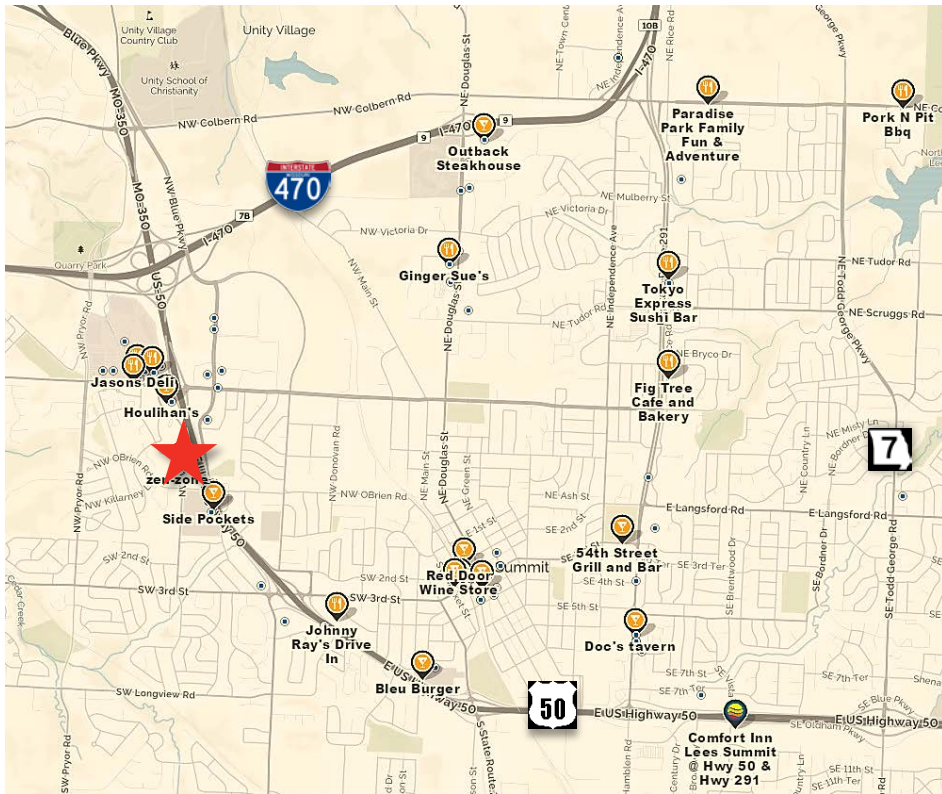
For more information, please contact:

SHER BLANDFORD
Retail Brokerage
816.936.8525 direct
sblandford@kessingerhunter.com

KESSINGER/HUNTER & COMPANY, LC
2600 Grand Boulevard, Suite 700
Kansas City, MO 64108
816.842.2690
www.kessingerhunter.com

437 NW MURRAY ROAD, LEE'S SUMMIT, MO 64063

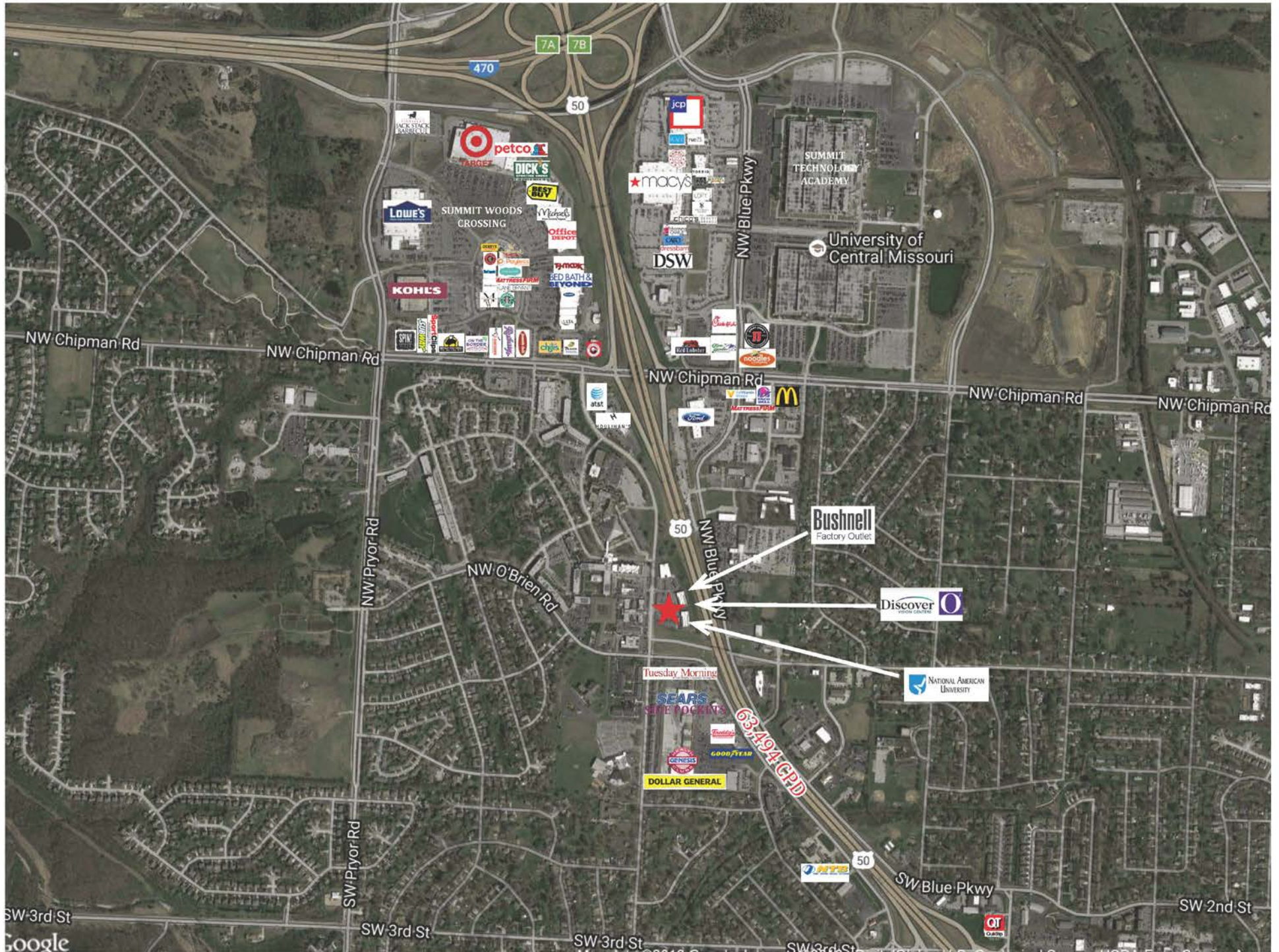
For Lease



For more information, please contact:

SHER BLANDFORD
Retail Brokerage
816.936.8525 direct
sblandford@kessingerhunter.com

KESSINGER/HUNTER & COMPANY, LC
2600 Grand Boulevard, Suite 700
Kansas City, MO 64108
816.842.2690
www.kessingerhunter.com



SUMMARY PROFILE

2000-2010 Census, 2017 Estimates with 2022 Projections
 Calculated using Weighted Block Centroid from Block Groups

Lat/Lon: 38.9218/-94.4036

RS1

437 NW Murray Rd

Lee's Summit, MO 64081

	2 mi radius	3 mi radius	5 mi radius
POPULATION			
2017 Estimated Population	24,846	44,821	95,637
2022 Projected Population	25,712	46,272	98,393
2010 Census Population	23,693	42,051	91,150
2000 Census Population	21,743	36,221	77,410
Projected Annual Growth 2017 to 2022	0.7%	0.6%	0.6%
Historical Annual Growth 2000 to 2017	0.8%	1.4%	1.4%
2017 Median Age	42.3	39.3	37.8
HOUSEHOLDS			
2017 Estimated Households	10,633	18,444	37,178
2022 Projected Households	11,001	19,038	38,302
2010 Census Households	9,945	16,959	34,779
2000 Census Households	9,301	14,635	29,292
Projected Annual Growth 2017 to 2022	0.7%	0.6%	0.6%
Historical Annual Growth 2000 to 2017	0.8%	1.5%	1.6%
RACE AND ETHNICITY			
2017 Estimated White	85.3%	84.0%	78.6%
2017 Estimated Black or African American	8.4%	9.2%	14.8%
2017 Estimated Asian or Pacific Islander	1.8%	2.0%	2.0%
2017 Estimated American Indian or Native Alaskan	0.4%	0.4%	0.3%
2017 Estimated Other Races	4.2%	4.3%	4.2%
2017 Estimated Hispanic	4.5%	4.7%	4.4%
INCOME			
2017 Estimated Average Household Income	\$81,882	\$87,582	\$90,476
2017 Estimated Median Household Income	\$72,808	\$77,382	\$79,738
2017 Estimated Per Capita Income	\$35,208	\$36,155	\$35,284
EDUCATION (AGE 25+)			
2017 Estimated Elementary (Grade Level 0 to 8)	1.6%	1.3%	1.3%
2017 Estimated Some High School (Grade Level 9 to 11)	3.7%	3.3%	3.3%
2017 Estimated High School Graduate	25.1%	22.7%	23.1%
2017 Estimated Some College	23.9%	24.3%	25.0%
2017 Estimated Associates Degree Only	8.8%	9.0%	9.1%
2017 Estimated Bachelors Degree Only	22.8%	24.8%	24.3%
2017 Estimated Graduate Degree	14.0%	14.6%	13.8%
BUSINESS			
2017 Estimated Total Businesses	1,538	2,721	3,709
2017 Estimated Total Employees	25,211	38,332	49,464
2017 Estimated Employee Population per Business	16.4	14.1	13.3
2017 Estimated Residential Population per Business	16.2	16.5	25.8

This report was produced using data from private and government sources deemed to be reliable. The information herein is provided without representation or warranty.