



For Lease

Building Specifications

- Immediate occupancy
- Easy access to GSP, NJ Turnpike & Route 287
- Close to Woodbridge Center Mall and Menlo Park Mall
- Newly renovated lobby & common areas
- Nearby hotels
- On-site cafeteria

Availability

- 5,205 RSF, 2nd floor
- 6,116 RSF, 2nd floor
- 2,506 RSF, 2nd floor
- 5,201 RSF, 4th floor
- 1,333 RSF, 5th floor
- 2,292 RSF, 5th floor

22,653 RSF

105 Fieldcrest Avenue
Edison, NJ

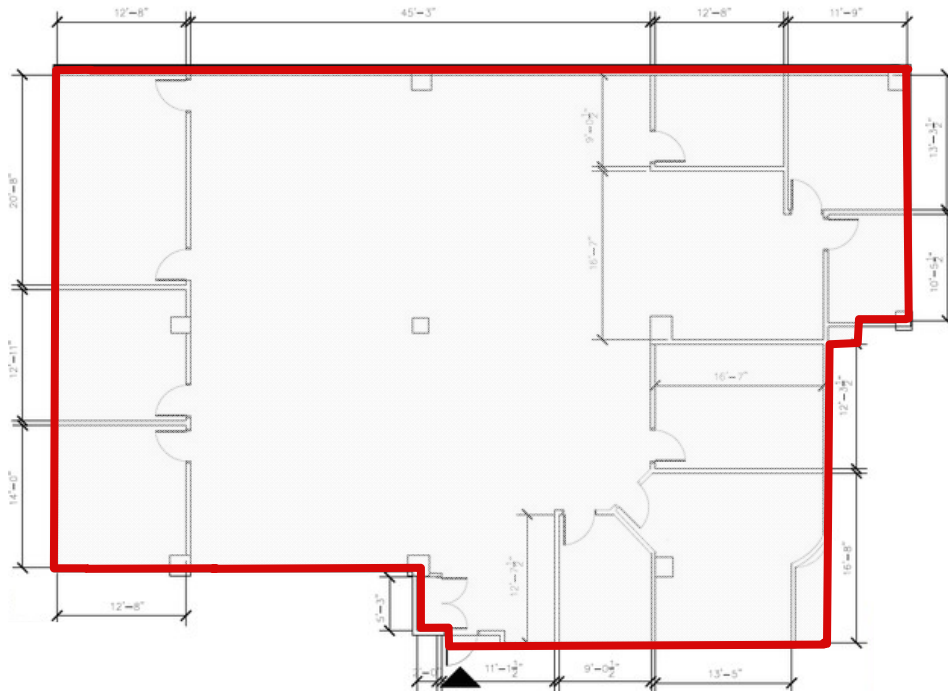
John Buckley
+1 732 590 4175
john.buckley@am.jll.com

Kyle Phelan
+1 732 590 4186
kyle.phelan@am.jll.com

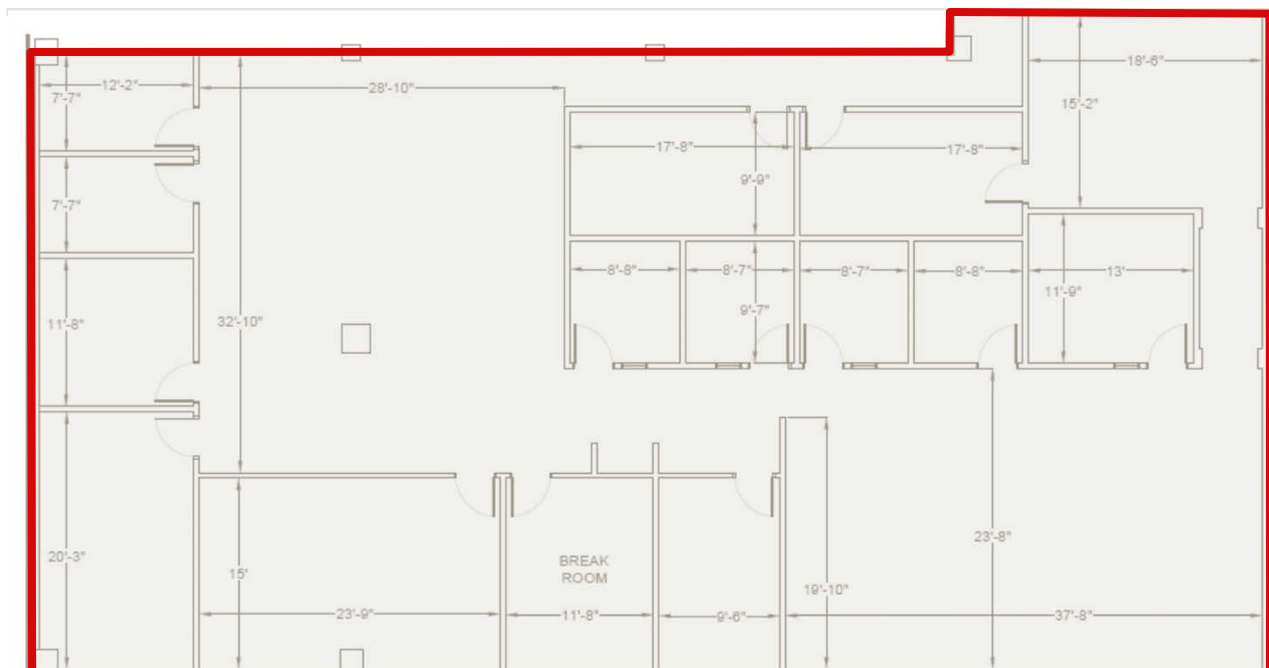


105 Fieldcrest Avenue, Edison

Second Floor – 5,205 RSF

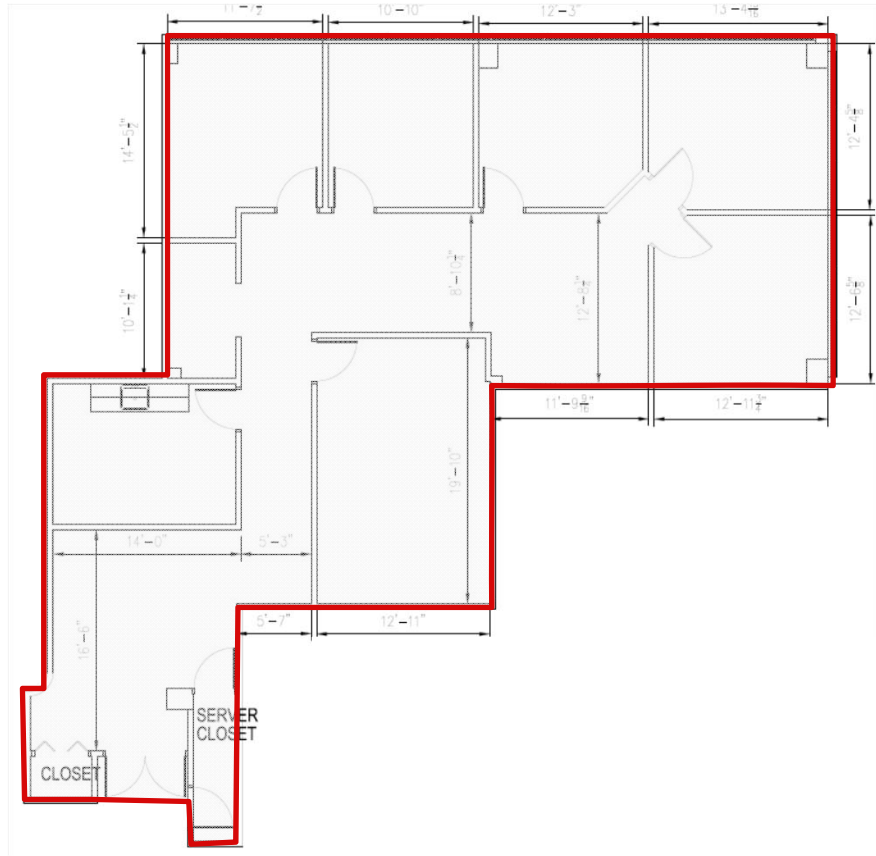


Second Floor – 6,116 RSF

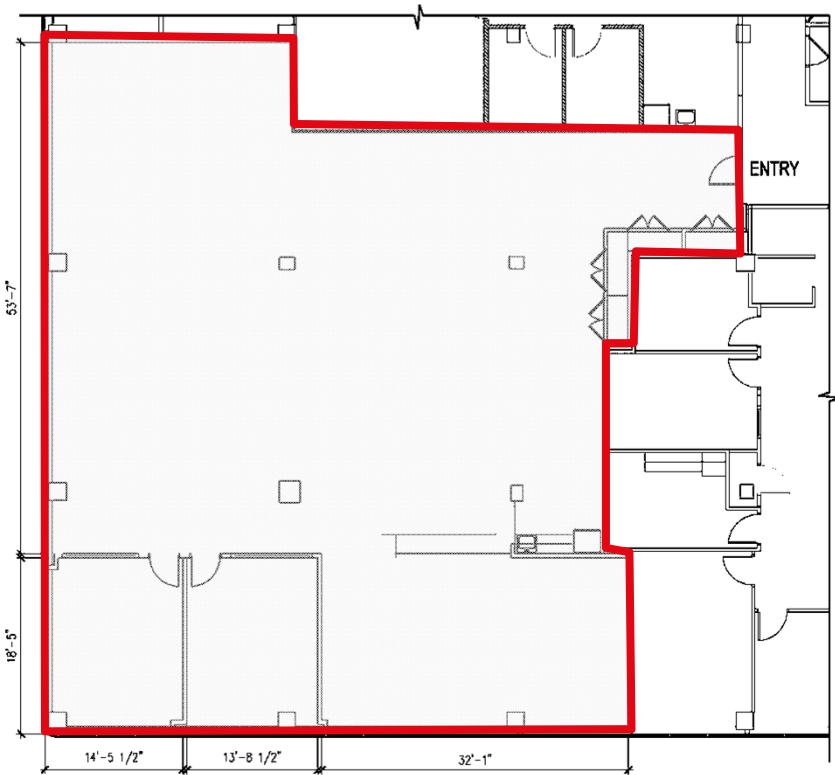


105 Fieldcrest Avenue, Edison

Second Floor – 2,506 RSF

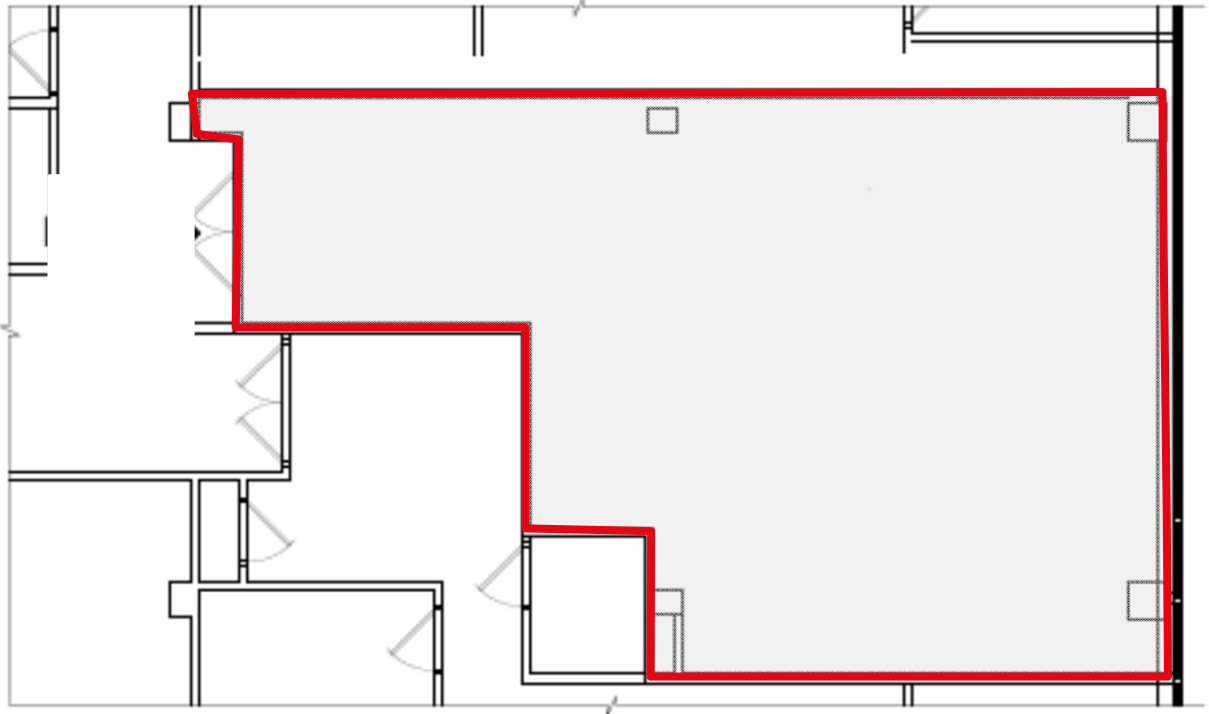


Fourth Floor – 5,201 RSF

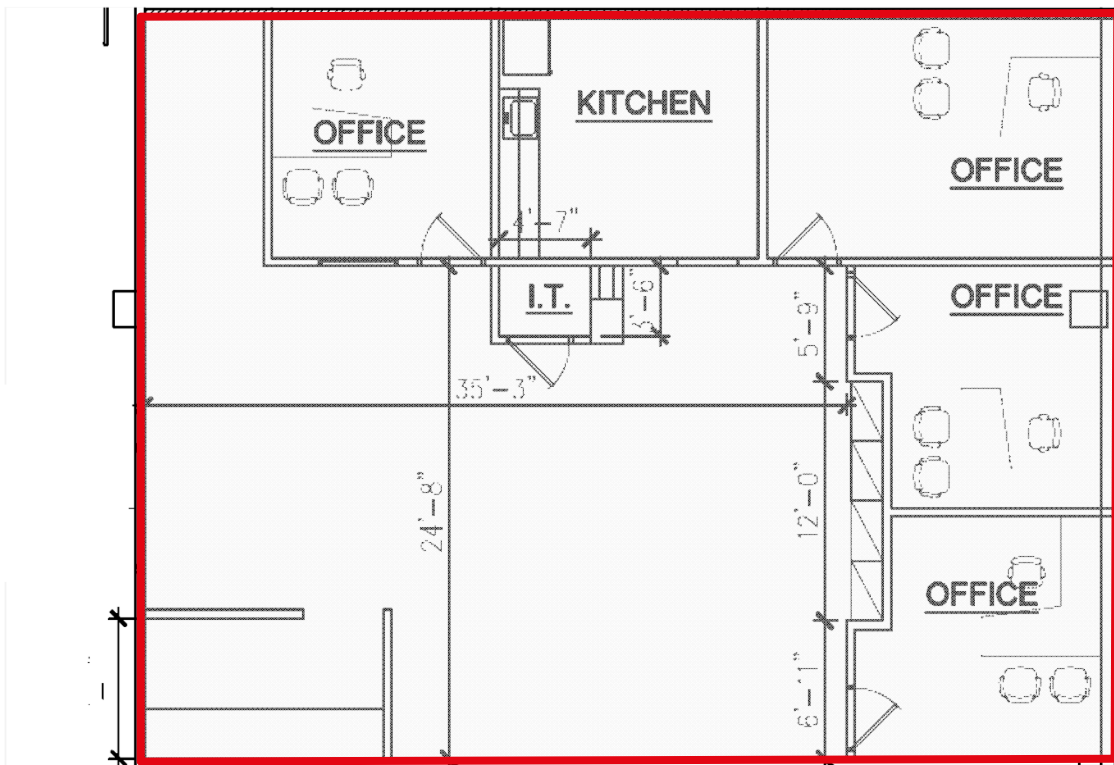


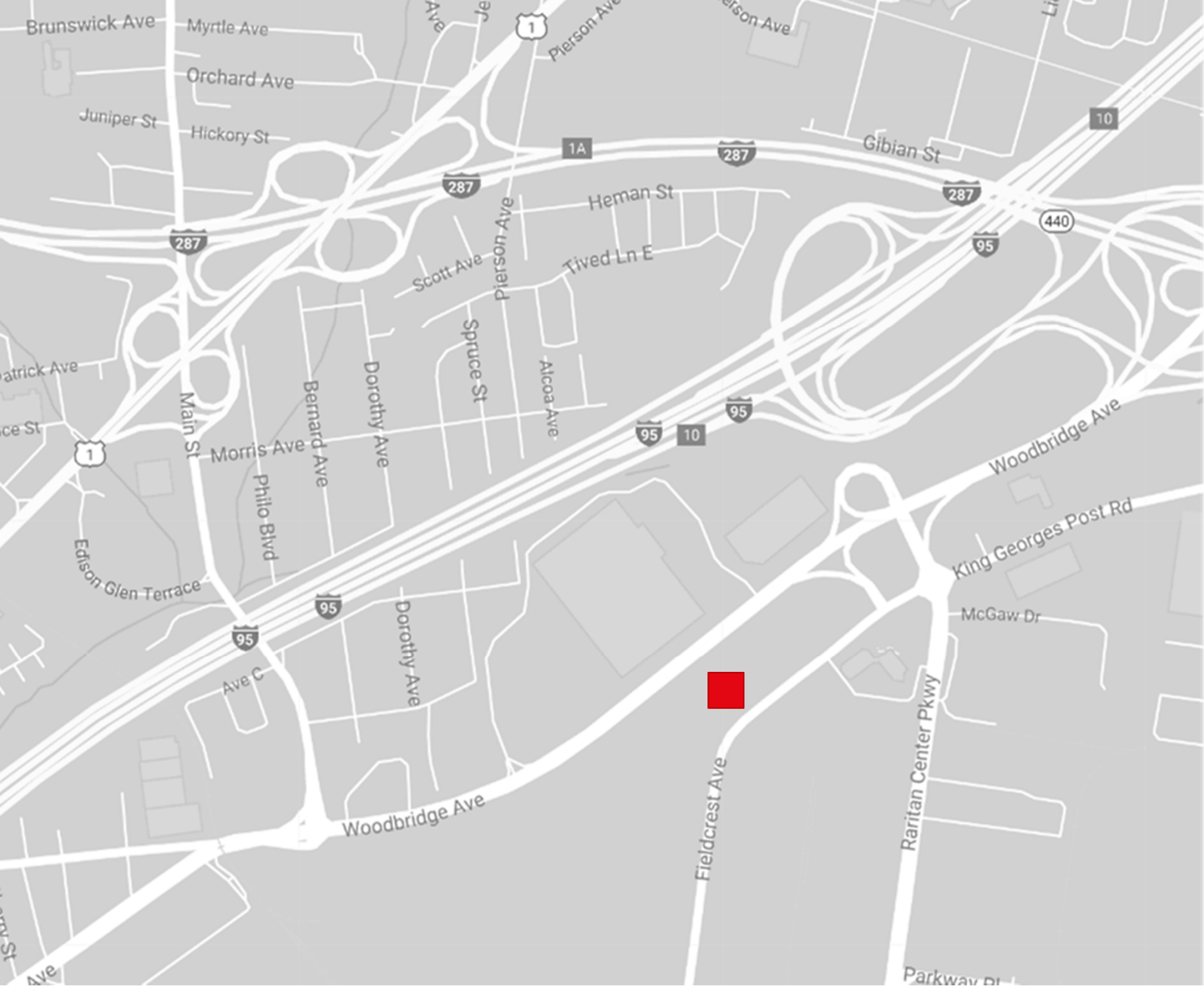
105 Fieldcrest Avenue, Edison

Fifth Floor – 1,333 RSF



Fifth Floor – 2,292 RSF





Location

The confluence of Route 287, NJ Turnpike and Garden State Parkway

105 Fieldcrest Avenue, Edison