

BUILT-OUT MEDICAL SPACE



337 E CORONADO ROAD

Phoenix, AZ 85004

EXCLUSIVE ADVISOR

DAN DOBRIC | Managing Director
602.952.3855 | ddobric@ngkf.com

BUILT-OUT MEDICAL SPACE



AVAILABLE SPACE

±9,472 RSF CONTIGUOUS

CLOSE PROXIMITY TO:

Banner University Medical Center, St Josephs Hospital,
Phoenix Children's & Arizona Heart Hospital



Fully built-out
medical space



Co-tenant with
DaVita



Quiet area with
easy access from
7th St & 3rd St,
just north of
I-10 Freeway



4.5 / 1000 SF
parking ratio

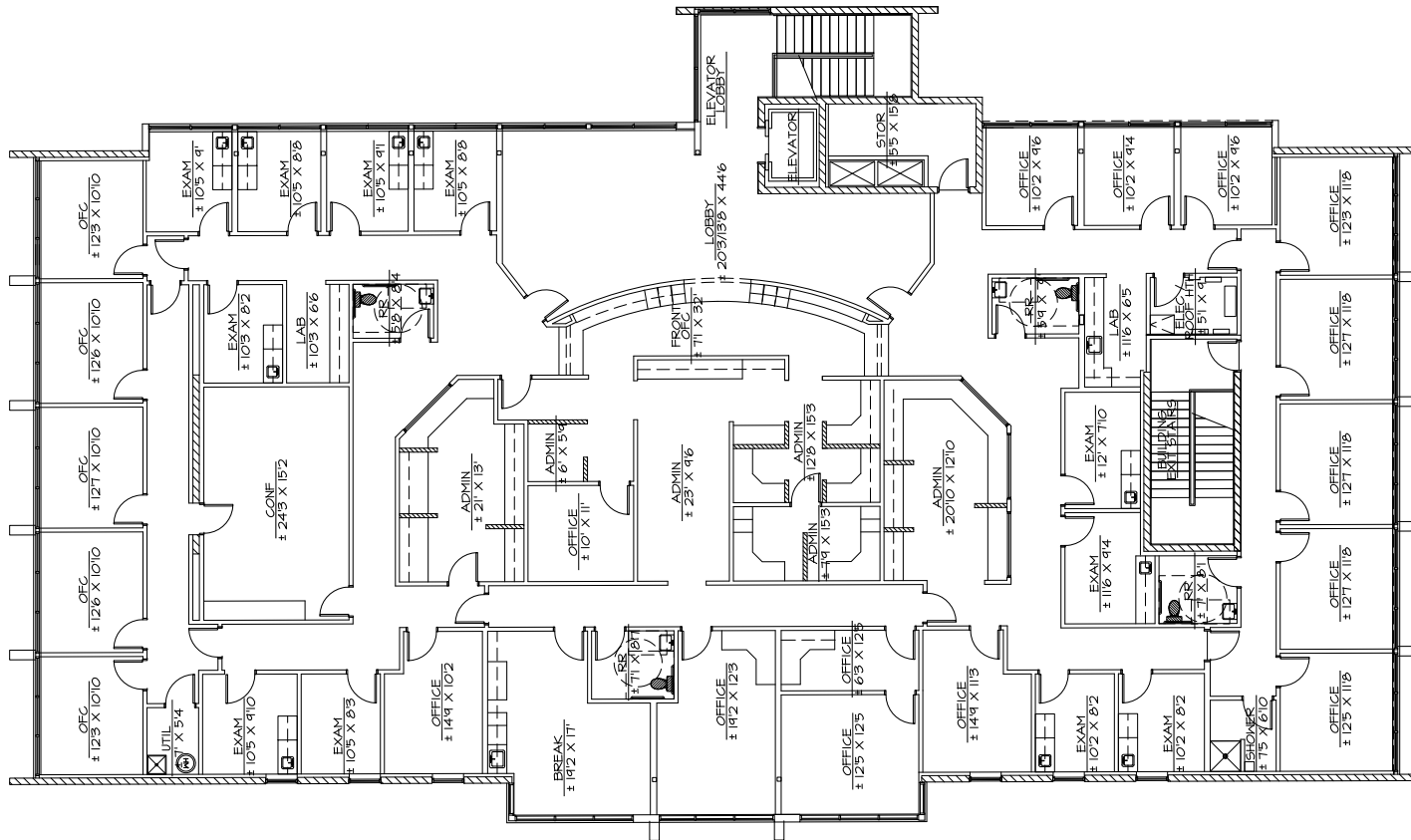
337 E CORONADO ROAD

Phoenix, AZ 85004

EXCLUSIVE ADVISOR

DAN DOBRIC | Managing Director
602.952.3855 | ddobric@ngkf.com

BUILT-OUT MEDICAL SPACE



±9,472 RSF CONTIGUOUS

337 E CORONADO ROAD

Phoenix, AZ 85004

EXCLUSIVE ADVISOR

DAN DOBRIC | Managing Director
602.952.3855 | ddobric@ngkf.com

BUILT-OUT MEDICAL SPACE



337 E CORONADO ROAD

Phoenix, AZ 85004

EXCLUSIVE ADVISOR

DAN DOBRIC | Managing Director
602.952.3855 | ddobric@ngkf.com

The information contained herein has been obtained from sources deemed reliable but has not been verified and no guarantee, warranty or representation, either express or implied, is made with respect to such information. Terms of sale or lease and availability are subject to change or withdrawal without notice.