

The Commons Industrial Park at Falcon View

**3041 N. Norfolk St, Suite 103**

Mesa, AZ 85215



**Lease Rate: \$0.89 Industrial Gross**

### Property Features

- ±1,911 SF Flex Unit Available For Lease - Suite 103
- Shared, Gated Yard
- Built Out Office and Restroom
- Air Conditioned Office & Restroom
- Evaporative Cooled Warehouse
- Sprinklered
- 18' Clear Height
- 10' x 14' Grade Level Door
- 120 V; 200 Amps; 3 Ph Power - 5 Outlets in Warehouse
- M-1 Zoning, City of Mesa
- Just North of McDowell Rd
- Easy Access to Loop 202 via Val Vista Dr or Greenfield Rd

For More Information,  
Please Contact:

**Matt Zaccardi**  
480.966.7625 (D)  
602.561.1339 (M)  
mzaccardi@cpiaz.com



**COMMERCIAL PROPERTIES INC.**

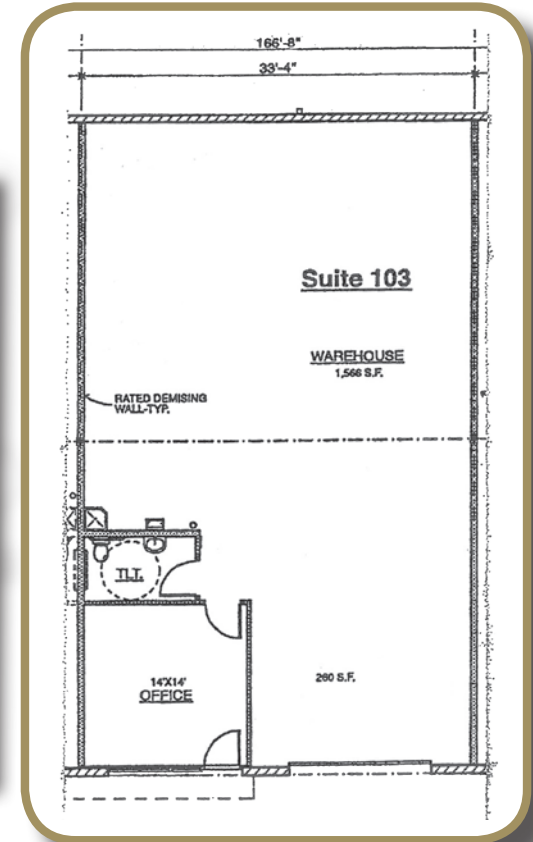
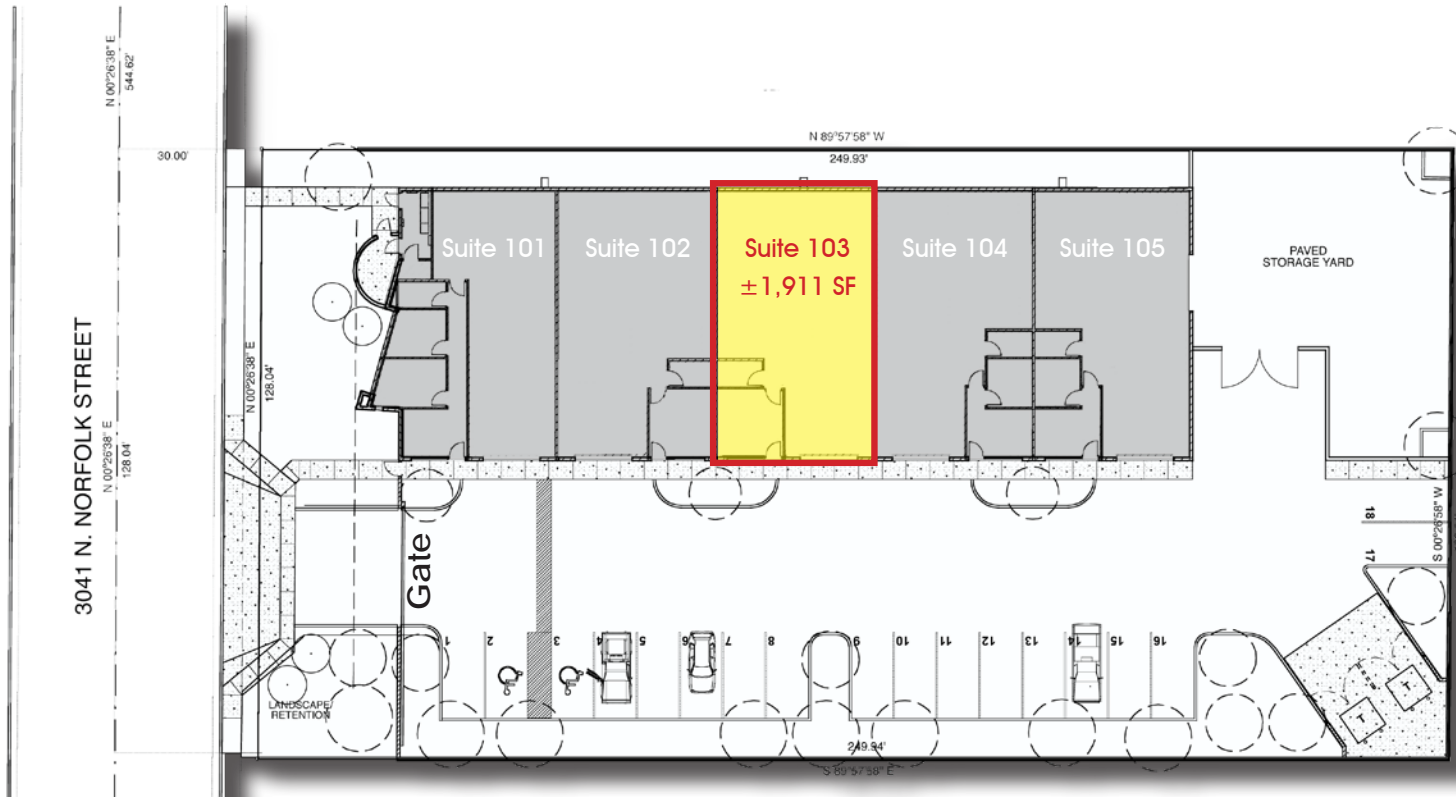
Locally Owned. Globally Connected. CRFAC International

TEMPE: 2323 W. University Drive, Tempe, AZ 85281 | 480.966.2301  
SCOTTSDALE: 8777 N. Gainey Center Dr., Suite 245, Scottsdale, AZ 85258 | www.cpiaz.com



# 3041 N. Norfolk St, Suite 103

Mesa, AZ 85215



Available For Sale or Lease

Suite 103: ±1,911 SF

Reception, Office, and Restroom

For More Information,  
Please Contact:

**Matt Zaccardi**  
480.966.7625 (D)  
602.561.1339 (M)  
mzaccardi@cpiaz.com



**COMMERCIAL PROPERTIES INC.**

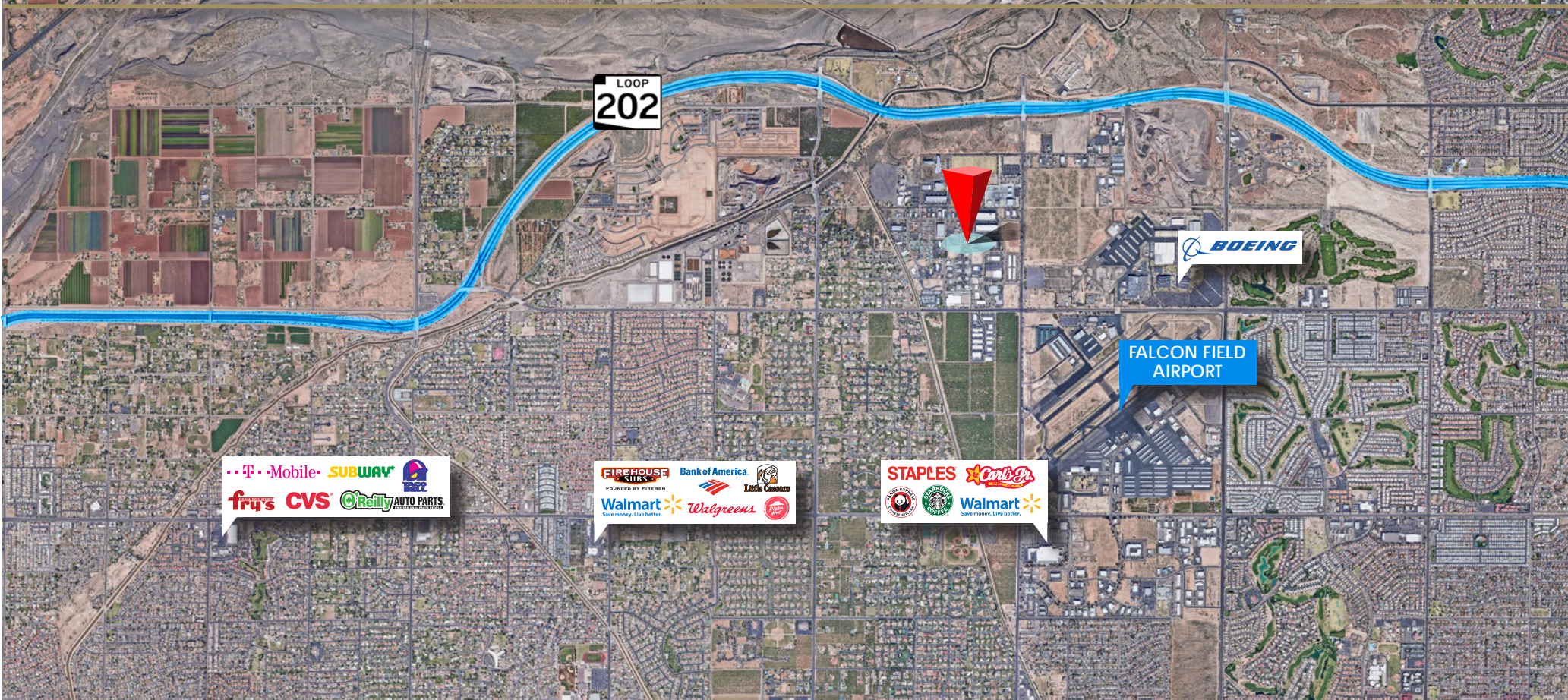
Locally Owned, Globally Connected, CRPAC International

TEMPE: 2323 W. University Drive, Tempe, AZ 85281 | 480.966.2301  
SCOTTSDALE: 8777 N. Gainey Center Dr., Suite 245, Scottsdale, AZ 85258 | www.cpiaz.com



# 3041 N. Norfolk St, Suite 103

Mesa, AZ 85215



Available For Sale or Lease

Suite 103: ±1,911 SF

Reception, Office, and Restroom

For More Information,  
Please Contact:

**Matt Zaccardi**  
480.966.7625 (D)  
602.561.1339 (M)  
mzaccardi@cpiaz.com



**COMMERCIAL PROPERTIES INC.**

Locally Owned, Globally Connected, CFRAC International

TEMPE: 2323 W. University Drive, Tempe, AZ 85281 | 480.966.2301  
SCOTTSDALE: 8777 N. Gainey Center Dr., Suite 245, Scottsdale, AZ 85258 | www.cpiaz.com