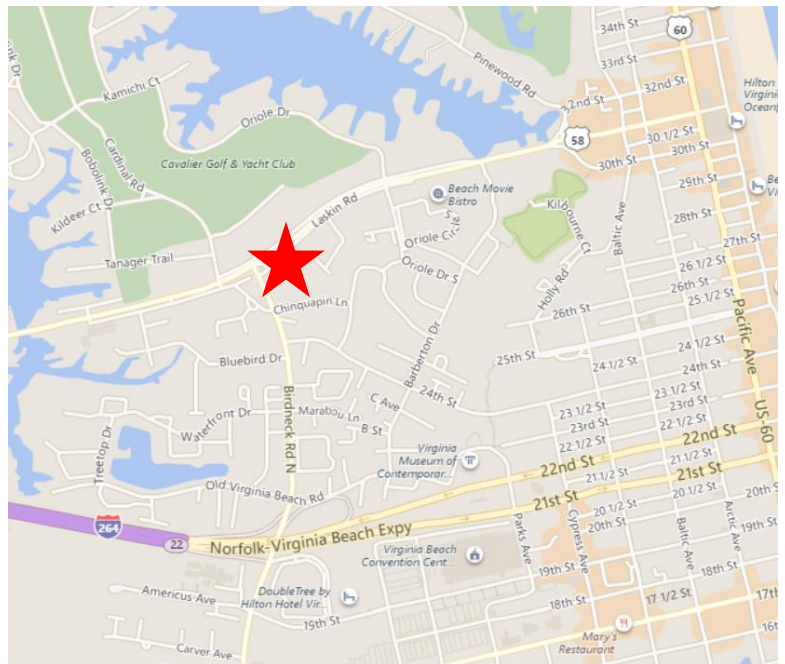




Property Features

- Approximately .70 Acres
- Excellent office or retail site
- 28,000 VPD on Laskin Road
26,000 VPD on Birdneck Road
- Located on the southeast corner of Laskin Road, adjacent to 7-11 with access to Laskin Road, Birdneck Road and Chinquapin Lane
- Sales Price - \$1,060,000
- Ground Lease - \$106,000 / year

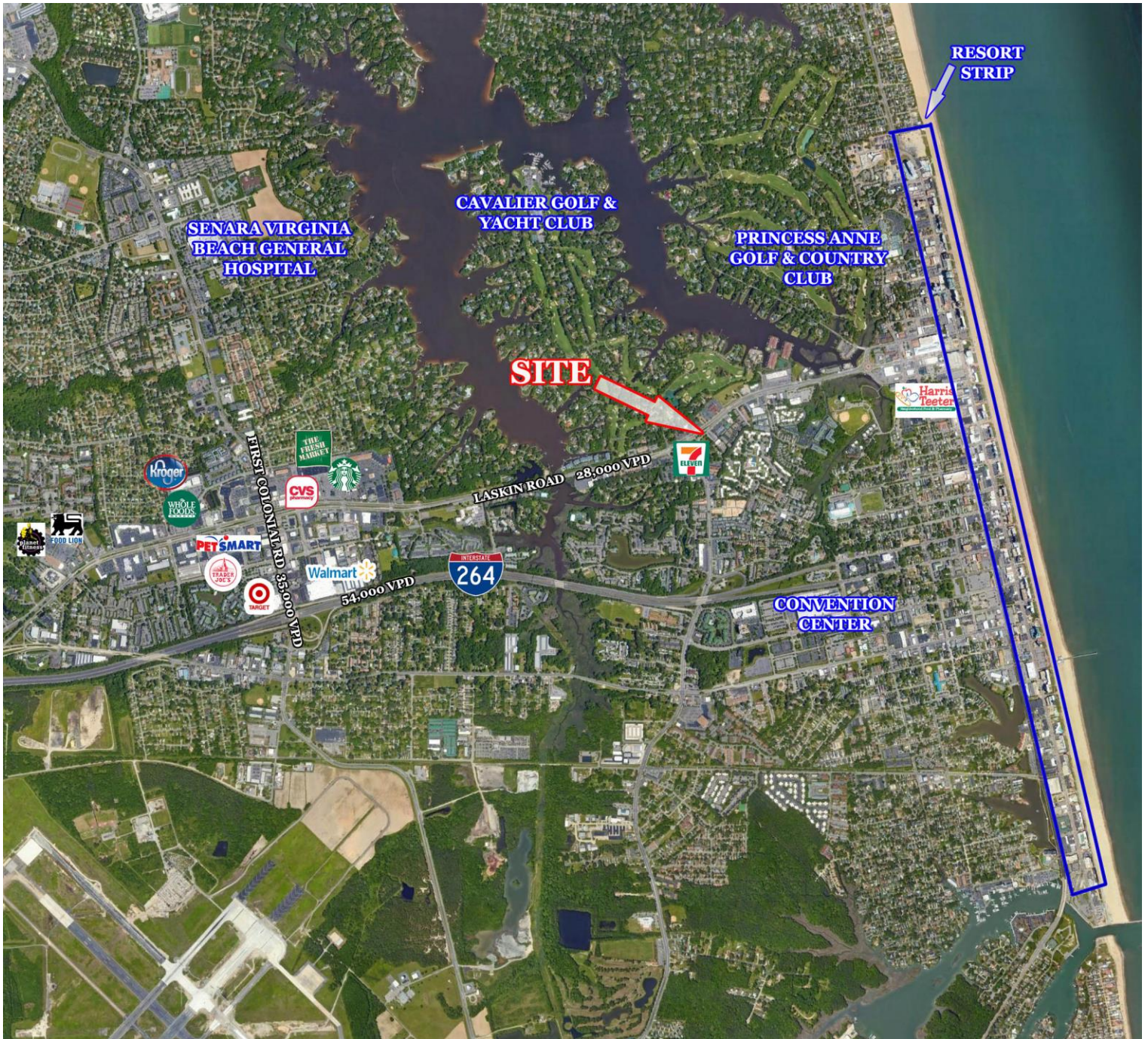


Demographics			
	1 Mile	3 Miles	5 Miles
Population	12,158	52,034	90,408
Daytime Population	6,403	27,869	54,176
Est. Household Income	\$67,515	\$83,604	\$85,603

For more information, contact:

SHARON RYALS-TAYLOR
First Vice President
757 213 4145
sharon.ryals-taylor@thalhimer.com

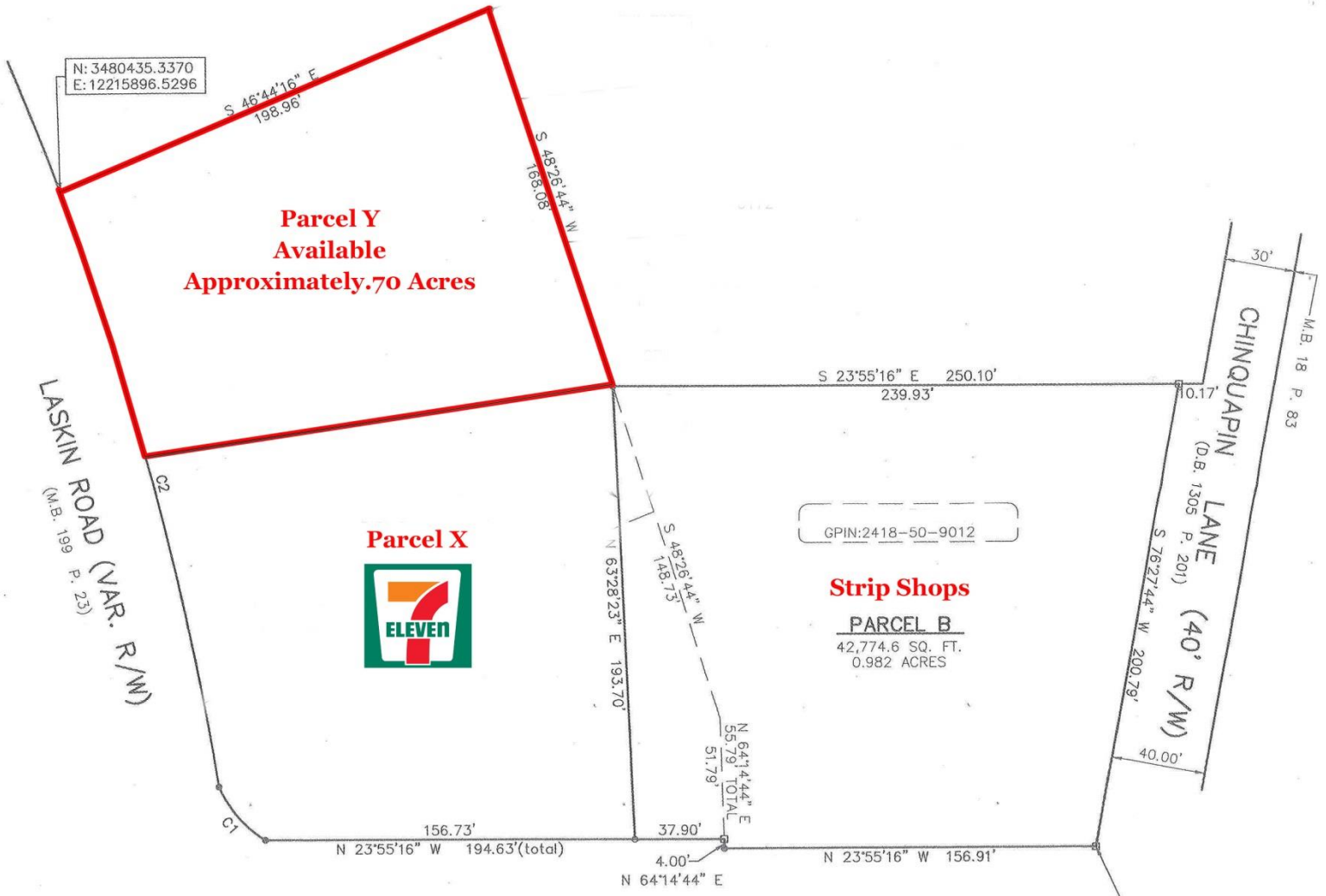
The Town Center of Virginia Beach
222 Central Park Ave., Suite 1820
Virginia Beach, VA 23462
www.thalhimer.com



For more information, contact:

SHARON RYALS-TAYLOR
First Vice President
757 213 4145
sharon.ryals-taylor@thalhimer.com

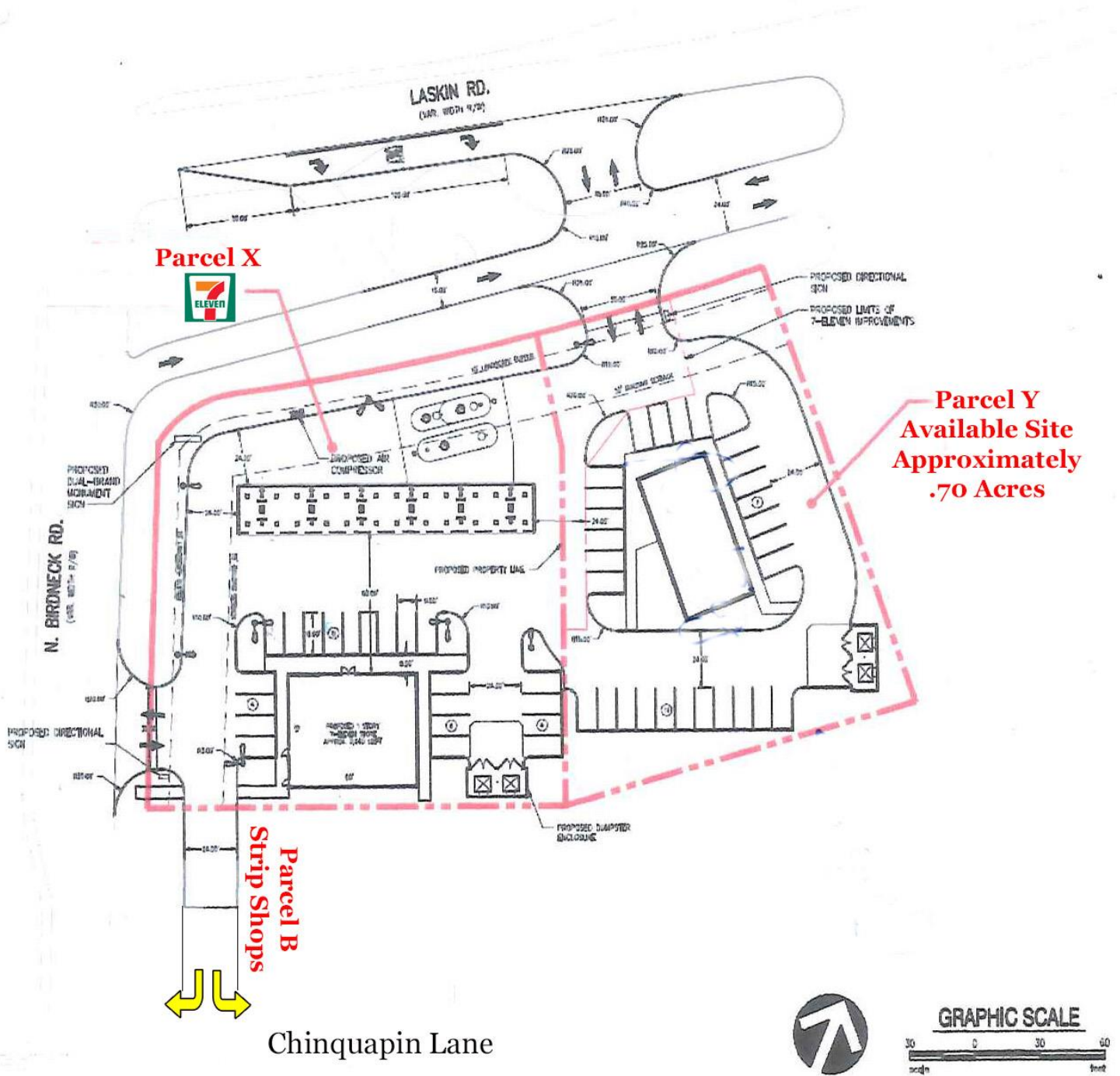
The Town Center of Virginia Beach
222 Central Park Ave., Suite 1820
Virginia Beach, VA 23462
www.thalhimer.com



For more information, contact:

SHARON RYALS-TAYLOR
 First Vice President
 757 213 4145
sharon.ryals-taylor@thalhimer.com

The Town Center of Virginia Beach
 222 Central Park Ave., Suite 1820
 Virginia Beach, VA 23462
www.thalhimer.com



For more information, contact:

SHARON RYALS-TAYLOR
 First Vice President
 757 213 4145
sharon.ryals-taylor@thalhimer.com

The Town Center of Virginia Beach
 222 Central Park Ave., Suite 1820
 Virginia Beach, VA 23462
www.thalhimer.com