

FOR LEASE

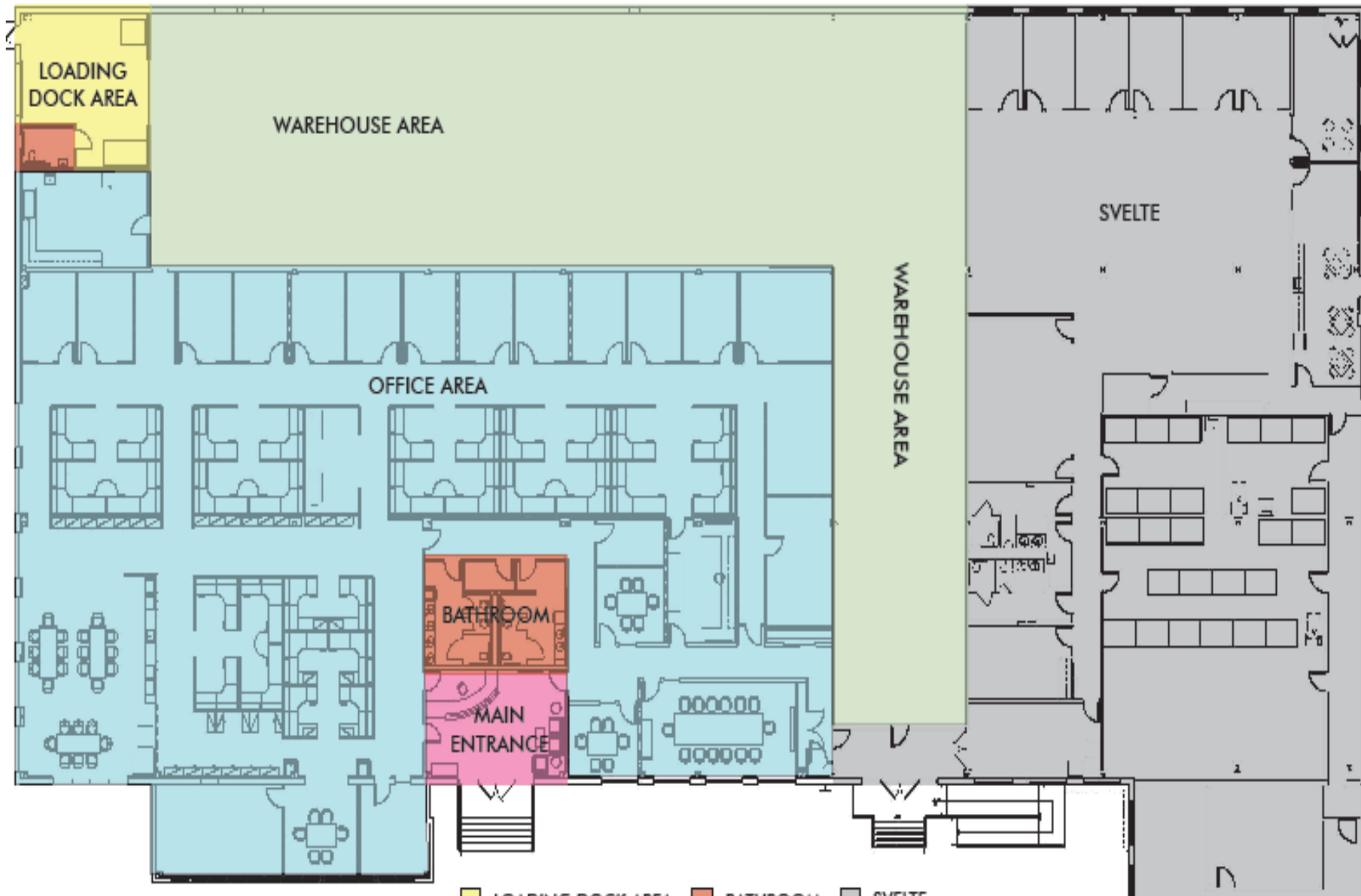
675 CENTRAL AVENUE

New Providence, NJ 07974



FLOOR PLAN

AVAILABLE 22,000 SF



675 CENTRAL AVENUE FLOOR PLAN

- LOADING DOCK AREA
- BATHROOM
- SVELTE
- OFFICE
- WAREHOUSE
- MAIN ENTRANCE

SPECIFICATIONS

DESCRIPTION	SPEC
Total Building	72,736 SF
Acres	6.7
Available Space	22,000 SF
Warehouse Space	8,000 SF
Office Space	14,000 SF
Year Built	1956, Renovated 2004
Docks	1 Exterior
Ceiling Height	18' – 20'
Power	2,000 Amp service main switch Building watts per SF– 20+
Life Safety	100% sprinklered
Water/Sewer	Borough of New Providence
Electric	Jersey Central Power & Light
Gas	Public Service Electric & Gas
Parking	70 Spaces



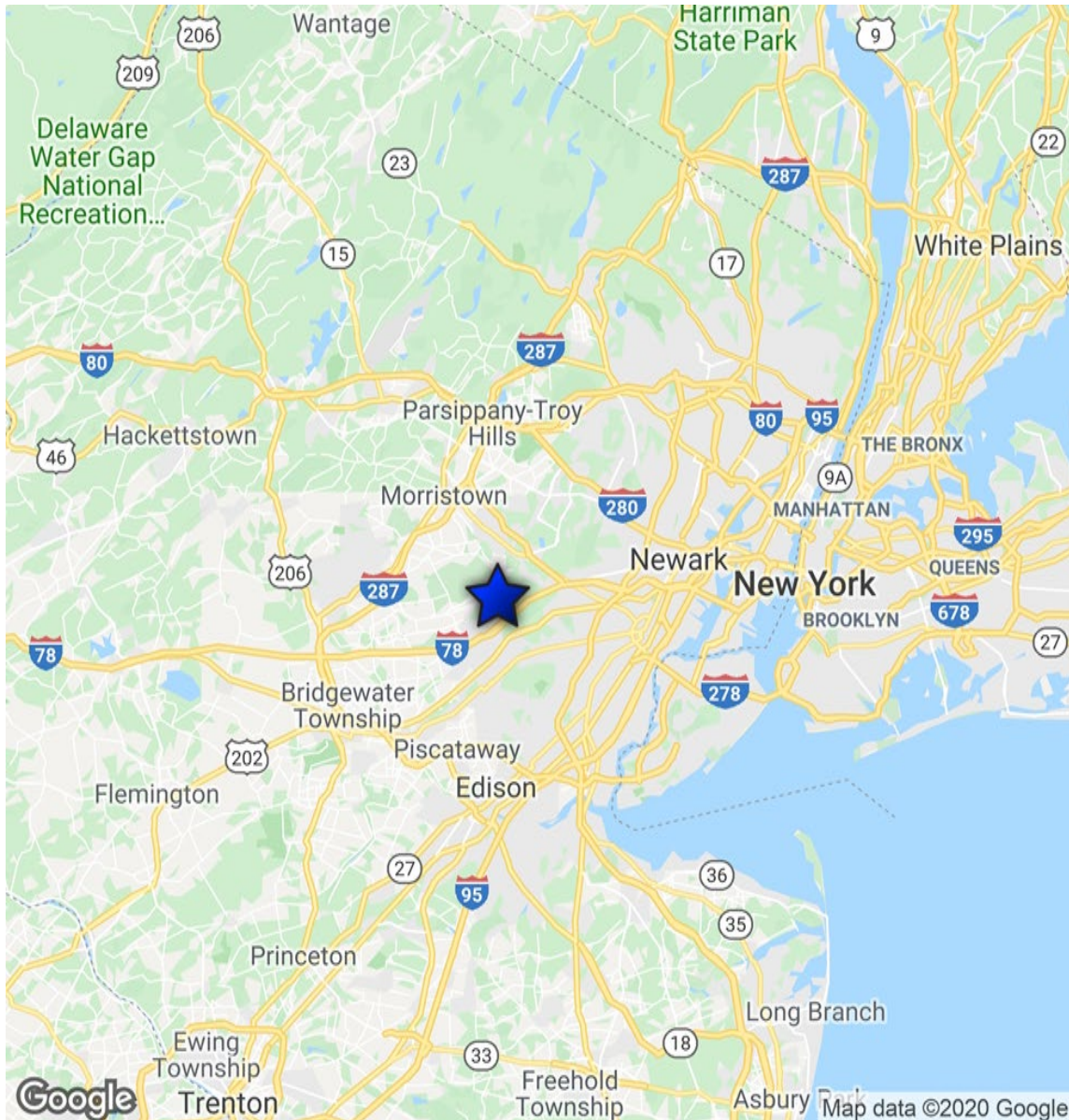
INTERIOR OFFICE PHOTOS



WAREHOUSE AREA



LOCATION



- Located in central New Jersey, Union County is situated at the crossroads of a number of New Jersey's major highways.
- 675 Central Avenue is located immediately off of multiple exits of I-78.
- The building is also situated in close proximity to a number of other major highways including I-287, Route 22, the Garden State Parkway and New Jersey Turnpike.
- Newark Liberty International Airport is located sixteen miles from the Property.

675 CENTRAL AVENUE

PLEASE CONTACT:

Geoffrey L. Schubert

Senior Vice President

+1201712 5880

geoffrey.schubert@cbre.com

© 2020 CBRE, Inc. All rights reserved. This information has been obtained from sources believed reliable, but has not been verified for accuracy or completeness. You should conduct a careful, independent investigation of the property and verify all information. Any reliance on this information is solely at your own risk. CBRE and the CBRE logo are service marks of CBRE, Inc. All other marks displayed on this document are the property of their respective owners, and the use of such logos does not imply any affiliation with or endorsement of CBRE. Photos herein are the property of their respective owners. Use of these images without the express written consent of the owner is prohibited.

675 CENTRAL AVENUE, New Providence, NJ 07974