



9409 Greenwell Springs Road

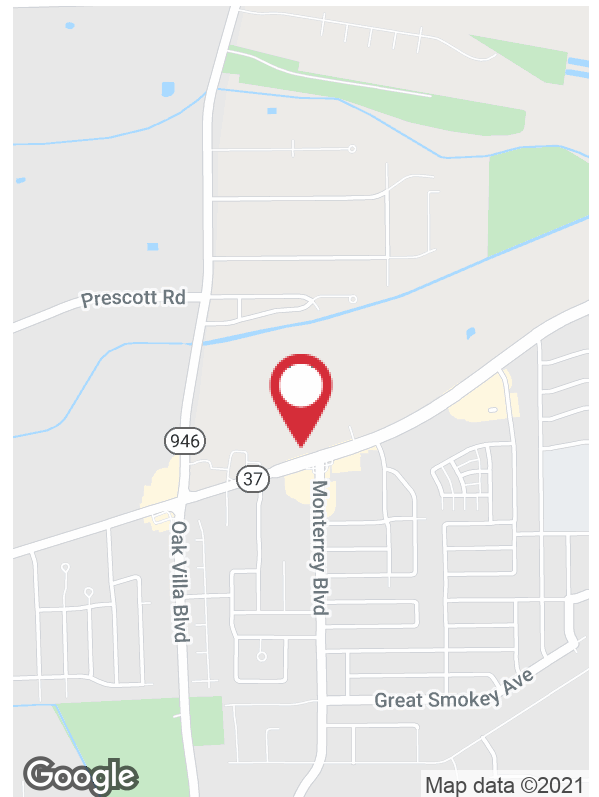
Baton Rouge, Louisiana 70814

Property Highlights

- 2.76 Acres
- Well located for a Convenience Store, Gas Station, and Car Wash
- C-1 Zoning
- \$349,000

Sale Price

\$349,000



CALL OR EMAIL FOR MORE INFORMATION

For more information

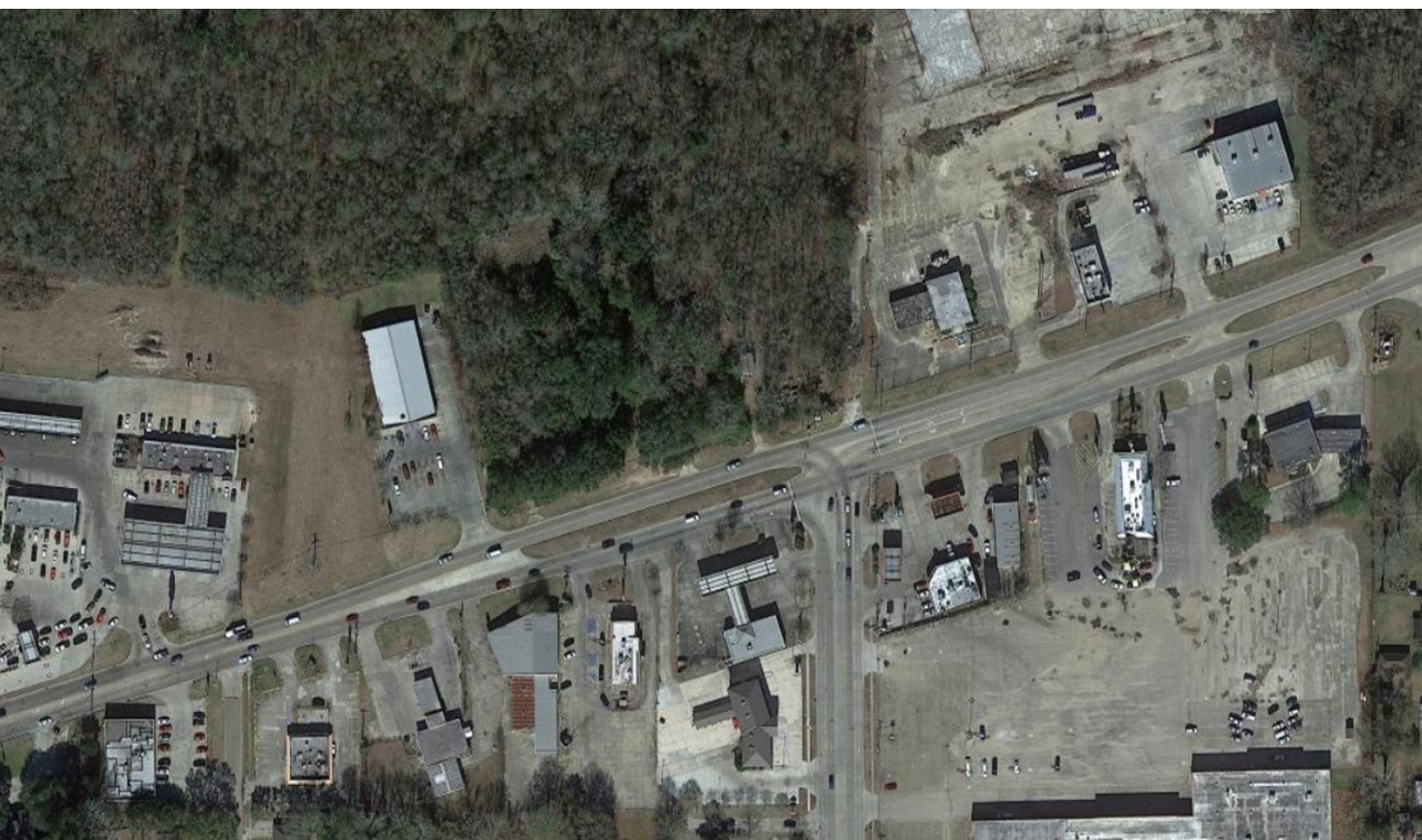
Erin Caballero, CCIM

O: 225 297 7868 | C: 225 241 6530
erinc@latterblum.com

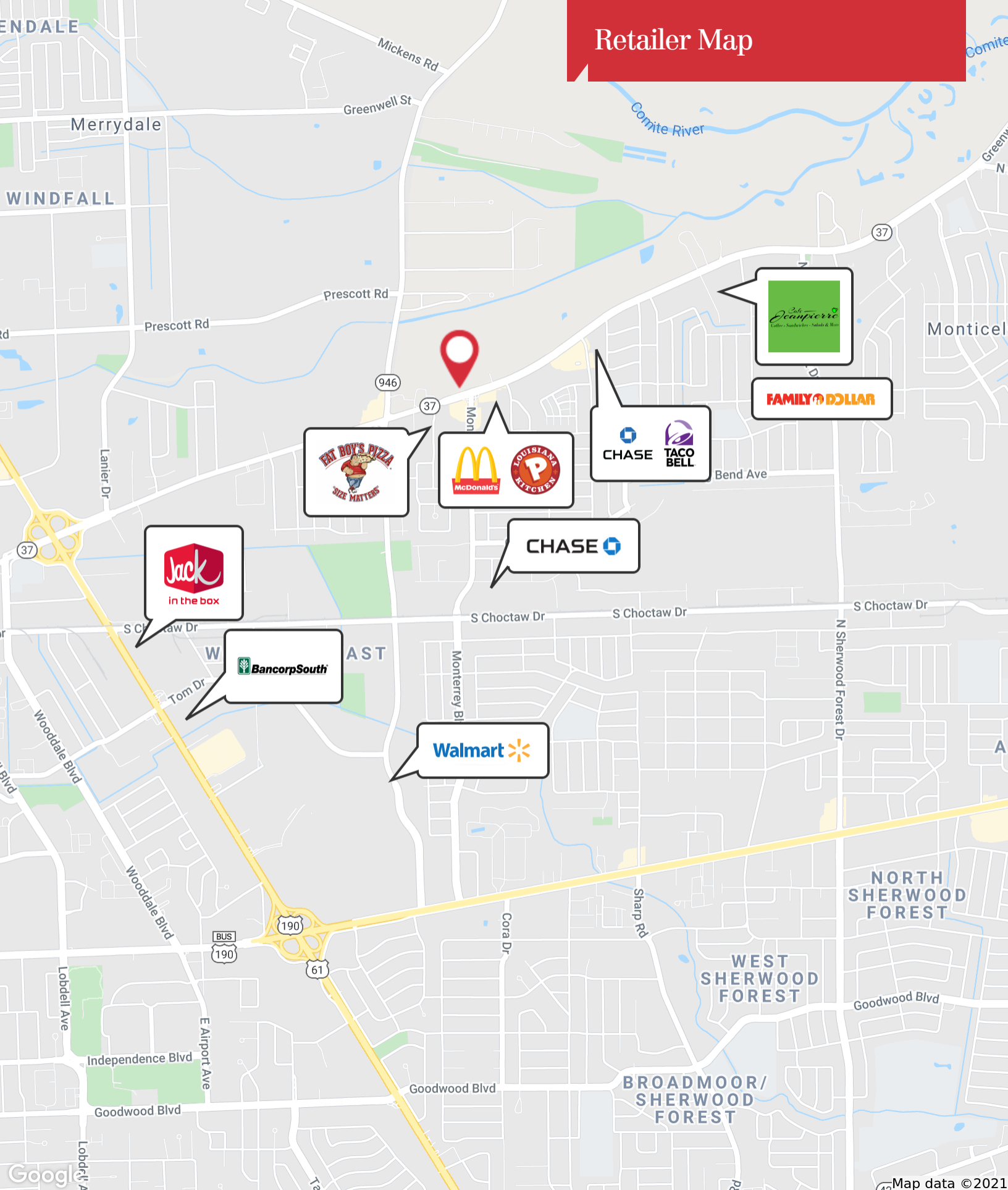
1700 City Farm Drive
Baton Rouge, LA 70806
225 295 0800 tel
latterblum.com

NO WARRANTY OR REPRESENTATION, EXPRESS OR IMPLIED, IS MADE AS TO THE ACCURACY OF THE INFORMATION CONTAINED HEREIN, AND THE SAME IS SUBMITTED SUBJECT TO ERRORS, OMISSIONS, CHANGE OF PRICE, RENTAL OR OTHER CONDITIONS, PRIOR SALE, LEASE OR FINANCING, OR WITHDRAWAL WITHOUT NOTICE, AND OF ANY SPECIAL LISTING CONDITIONS IMPOSED BY OUR PRINCIPALS NO WARRANTIES OR REPRESENTATIONS ARE MADE AS TO THE CONDITION OF THE PROPERTY OR ANY HAZARDS CONTAINED THEREIN ARE ANY TO BE IMPLIED. LICENSED IN LOUISIANA.

Additional Photos



Retailer Map



1700 City Farm Drive
Baton Rouge, LA 70806
225 295 0800 tel
latterblum.com

Location Maps

