



EXCEPTIONAL CREATIVE OFFICE

121,120 SF HIGH IMAGE HEADQUARTERS

15202 GRAHAM STREET HUNTINGTON BEACH, CA 92649

Voit
REAL ESTATE SERVICES

AERIAL

Bolsa Ave.

Buckingham Dr.

Engineer Dr.

Graham St.

Argosy Ave.

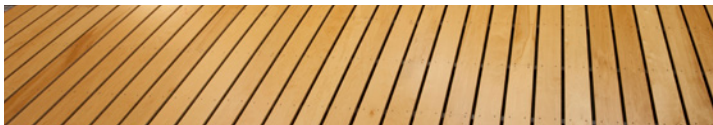
CREATIVE
OFFICE
HEADQUARTERS



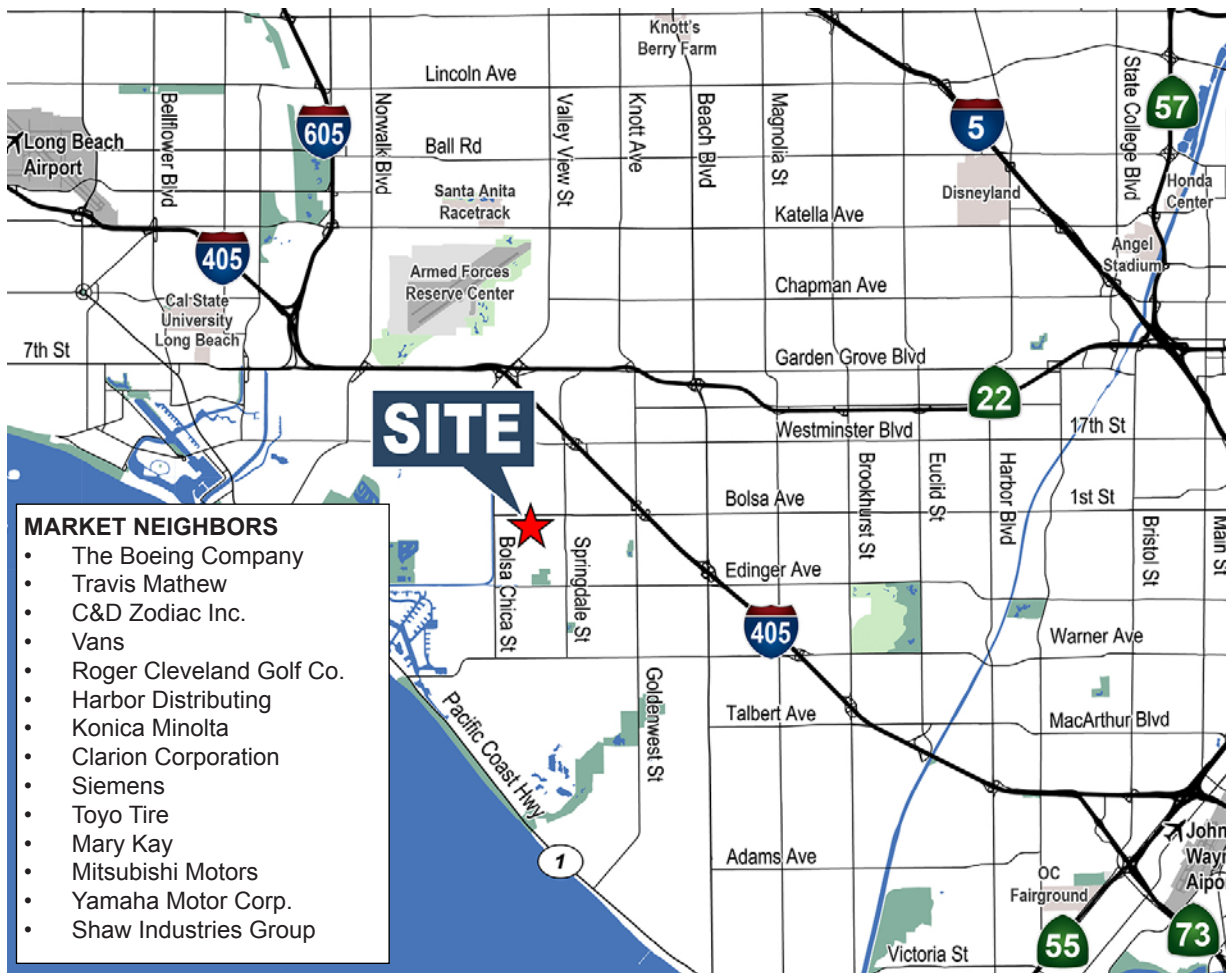


PROPERTY DETAILS

- High Image Ultra Creative Office Headquarters
- Former Quiksilver Building
- Desirable West County Location
- 40,000 SF Built-Out Mezzanine Over 81,120 SF First Floor
- Open Volume 28' Ceiling Office Environment
- State of the Art Tenant Improvements
- Full Service Cafeteria
- Interior Amphitheater/High Definition Audio Visual System
- Server System Diesel Generator On Site
- Available with 45-60 Days Advance Notice
- 305 Parking Stalls
- Cubicle Furniture Systems Available
- Sublease till 12/31/24



MAP



FLOOR PLANS



FIRST FLOOR

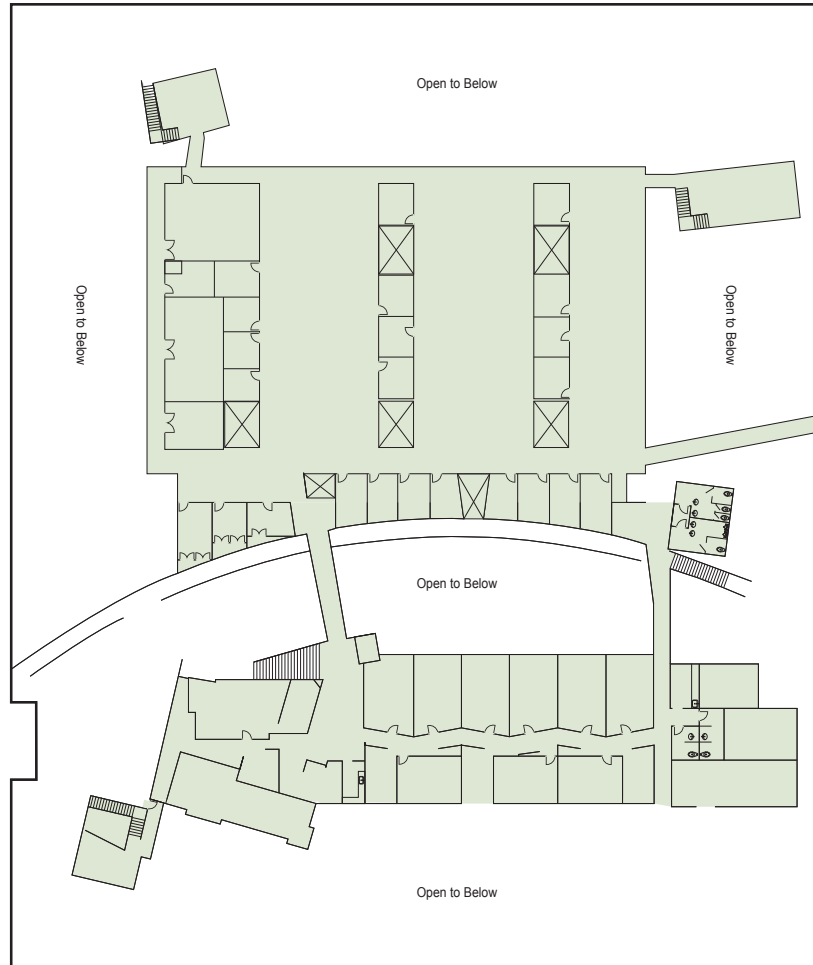


SECOND FLOOR

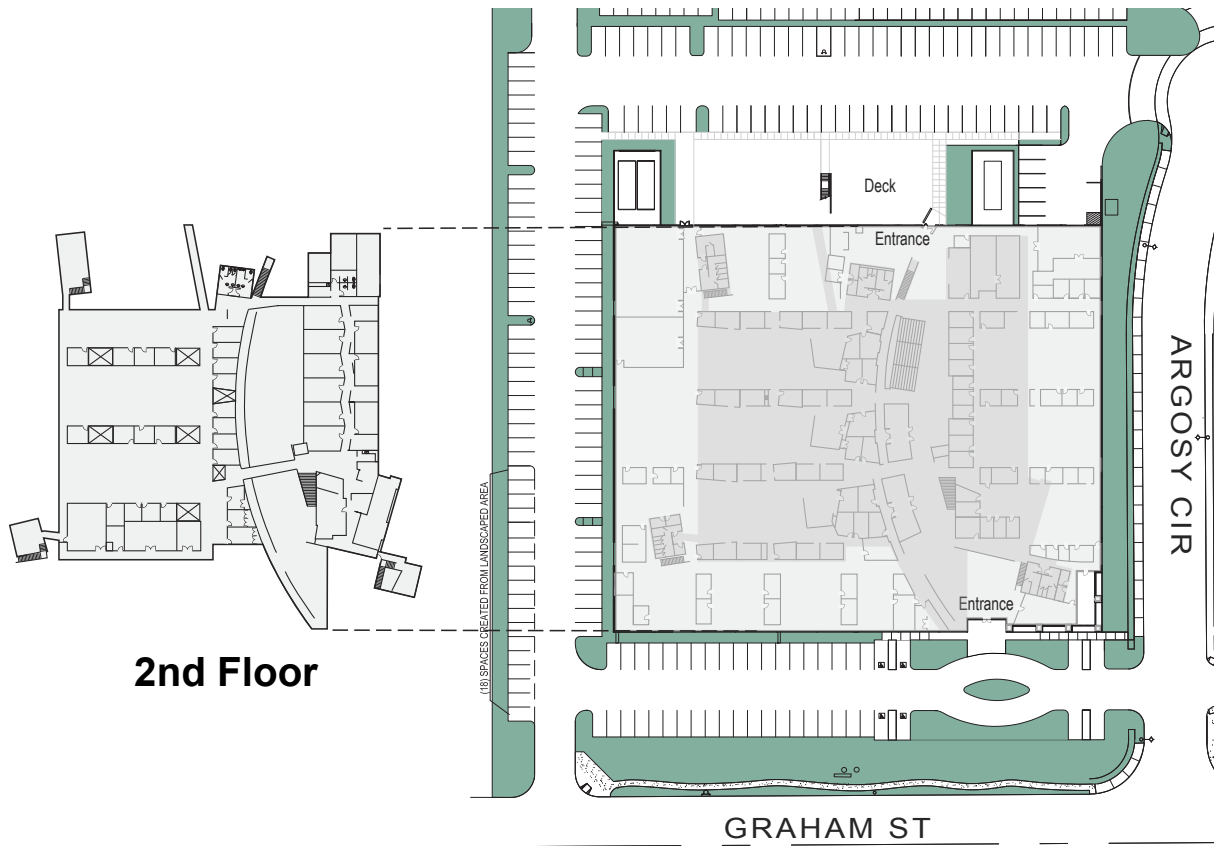


GRAHAM STREET

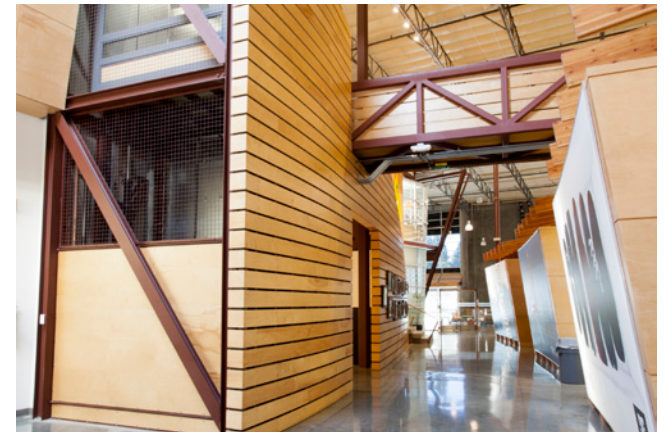
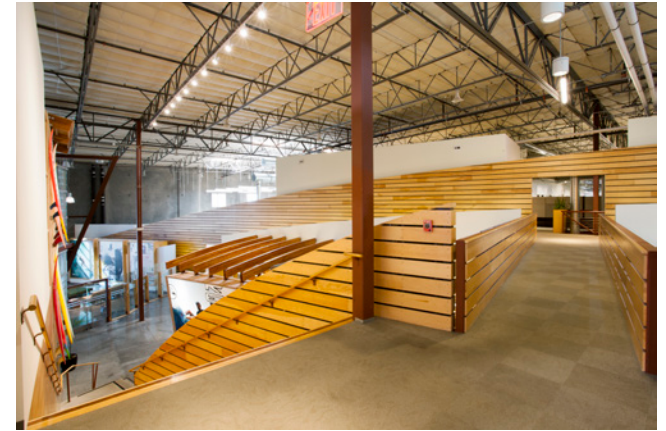
ARGOSY CIRCLE



SITE PLAN



2nd Floor





EXCEPTIONAL CREATIVE OFFICE

121,120 SF HIGH IMAGE HEADQUARTERS
15202 GRAHAM STREET HUNTINGTON BEACH, CA 92649

JOE MILLER
Vice President
Lic # 01326530
P 714.935.2315
jmiller@voitco.com

ROBERT J. SOCCI
Executive Vice President
Lic # 00936016
P 714.935.2314
rsocci@voitco.com

Voit
REAL ESTATE SERVICES

2400 E. Katella Ave., Suite 750, Anaheim, CA 92806
714.978.7880 • 714.978.9431 Fax
Lic #01333376 | www.voitco.com

Licensed as a Real Estate Salespersons by the CA Bur of Real Estate. The information contained herein has been obtained from sources we deem reliable. While we have no reason to doubt its accuracy, we do not guarantee it. ©2015 Voit Real Estate Services, Inc. All Rights Reserved. Real People. Real Solutions.® is a registered trademark of Voit Real Estate Services.