

For Sale



Copytronics Building

420 S. Orlando Avenue

Winter Park, FL 32789

BOB HOLD

bhold@holdthyssen.com

Ph: 407-691-0505

M: 407-256-4396

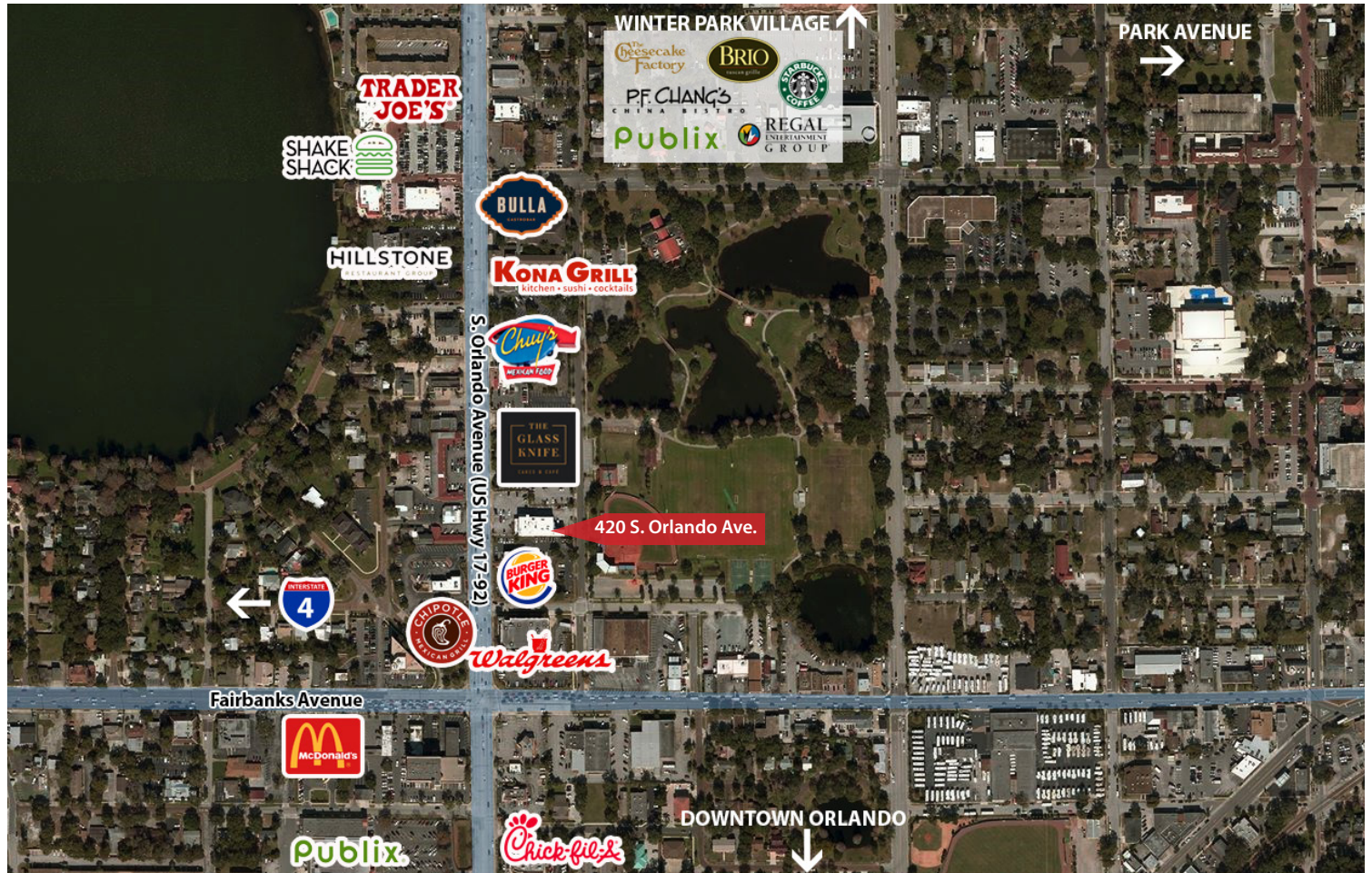
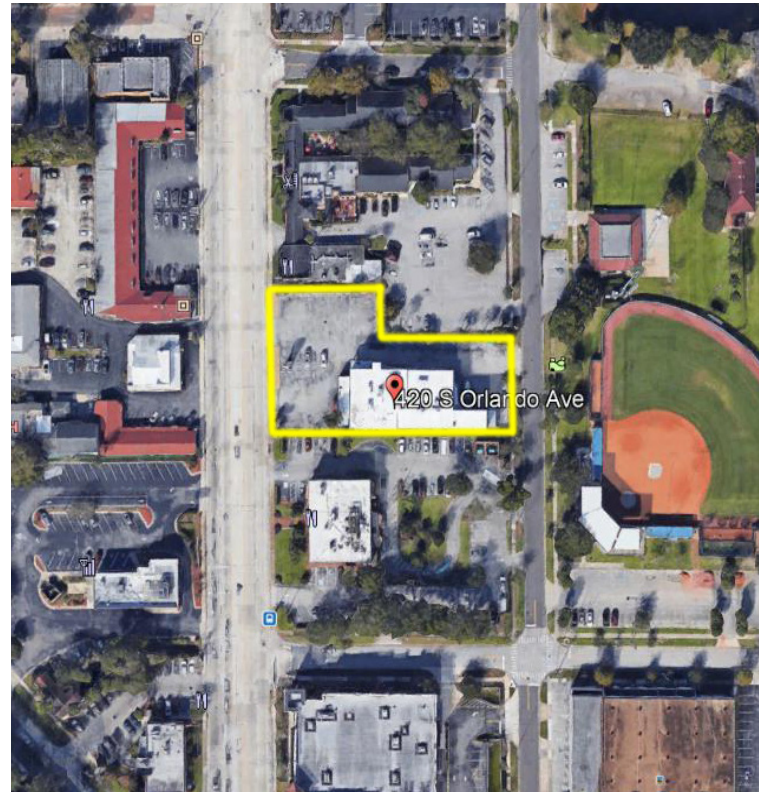


Property Details

The property is located directly on S. Orlando Avenue (US Hwy 17-92) with prominent building signage and 150' of frontage. The 14,160 square foot building is on 31,880 square feet of land. The building itself is made up of 11,662 square feet of office/showroom, with the remaining 2,498 square feet being first floor warehouse space. This C-3 zoned, user ready building has street to street access through its 42 space parking lot.

Surrounding Area

The property is ideally located directly in the heart of major development along 17-92 between Lee Road and Fairbanks Avenue. Within walking distance of the building are numerous new restaurants and shops in Lakeside Crossing, with Winter Park Village and the developing Ravaudage only blocks away. The internationally acclaimed Park Avenue is less than a mile from the subject site with Downtown Orlando just a 10 minute drive South. Direct access to I-4 via Fairbanks Avenue.

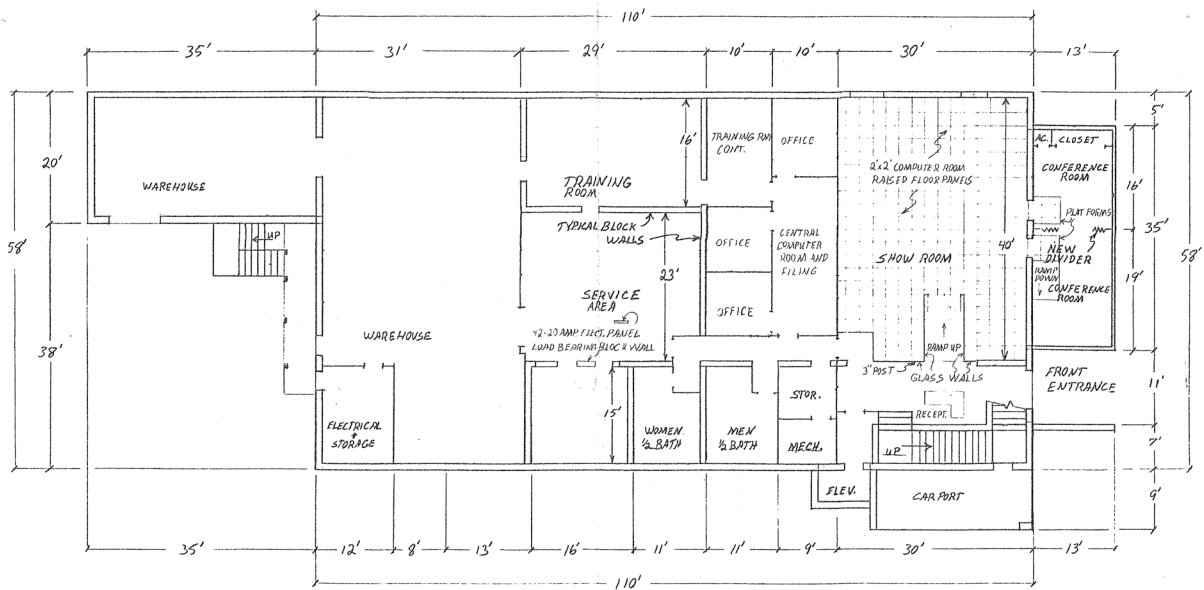


Building Photos

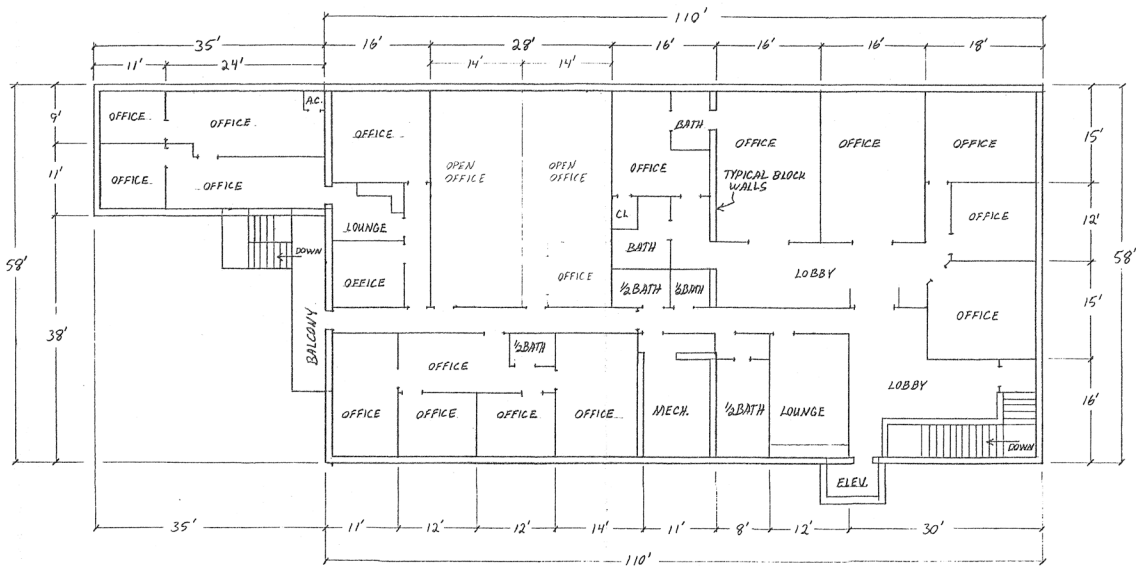


Floor Plans

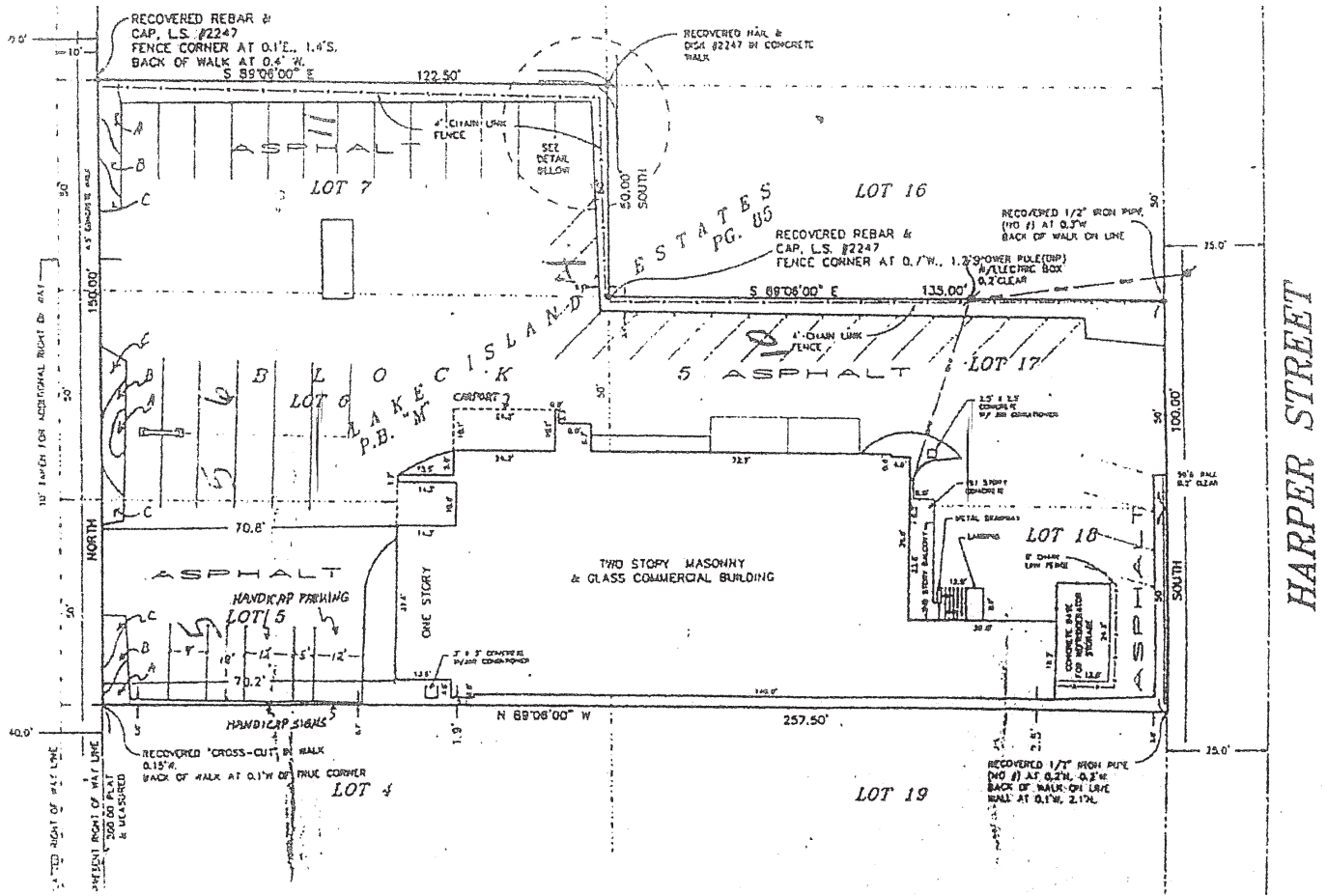
FIRST FLOOR



SECOND FLOOR



Site Plan



Demographics

2017	1-Mile	3-Mile	5-Mile
2017 Population. Est.	10,478	83,166	264,169
2022 Proj. Population	11,444	91,125	287,334
Pop. Growth 2017-2022	9.22%	9.57%	8.77%
2017 Households Est.	4,901	37,062	116,735
2022 Proj. Households	5,335	40,596	126,903
2017 Avg. HH Income	\$75,011	\$94,087	\$73,809
2017 Median HH Income	\$44,522	\$64,620	\$49,993

Source: CoStar 2018

FOR MORE INFORMATION:



BOB HOLD
 bhold@holdthysen.com
 Ph: 407-691-0505
 M: 407-256-4396

301 S. New York Avenue
 Suite 200
 Winter Park, FL 32789



www.holdthysen.com

The information above has been obtained from sources believed reliable. While we do not doubt its accuracy we make no guarantee, warranty or representation about it. It is your responsibility to independently confirm its accuracy and completeness. Any projections, opinions, assumptions, or estimates used are for example only and do not represent the current or future performance of the property. Hold-Thysen, Inc. is a licensed real estate broker.