

115 AVENUE C

BETWEEN E 7TH & 8TH STREETS | ALPHABET CITY

ksr
KASSIN SABBAGH REALTY



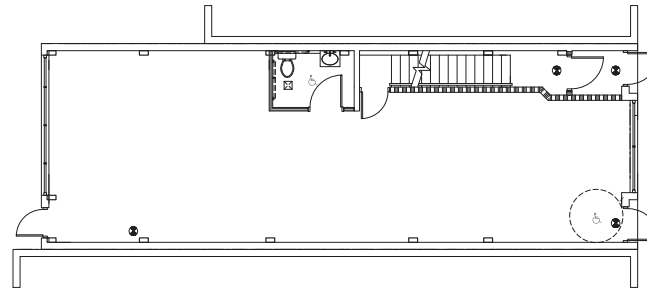
115 AVENUE C

SIZE 1,250 SF
FRONTAGE 12'
CEILING HEIGHT 12'
POSSESSION Immediate
TRANSPORTATION 

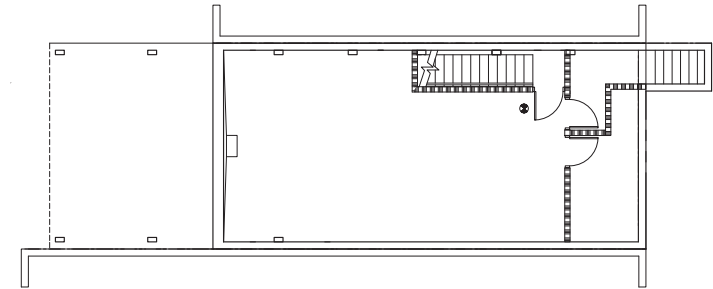



- Pristine condition with full sprinkler system and marble floors
- 3 inch gas line ready for hookup with full hvac
- Boutique heavy foot traffic neighborhood




GROUND FLOOR




BASEMENT




Patisserie Florentine
RUSSIAN & St. Nicholas Church
TURKISH BATHS 

WHITMAN'S Cagen
TIMNA 
Cafe Mogador Since 1983
DAVID'S LUKE'S
Café 
BIG & BOLD 

NIAGARA SideWalk
Carma East
Buenos Aires RESTAURANT
Thin Crust Pizza 

TOMPKINS SQUARE PARK

E 10TH STREET

ROYALE MACE
Cocktail bar 


E 9TH STREET

SUMMIT BAR
LOVERBOY

E 8TH STREET

JUM SCHNEIDER

E 7TH STREET

PARDON my punch
HORUS CAFE 

E 6TH STREET

East Village Tavern
El Riconcito

the Wayland
A&C Kitchen Michelle

КАФАНА (KAFANA)

EDI & THE WOLF
ALPHABET CITY BEER CO.

CONTACT OUR BROKER FOR MORE INFORMATION:

MAYER GHONOJA

MGhonoja@ksrny.com

347.409.8355

AKSR
KASSIN SABBAGH REALTY

All information supplied in this marketing presentation and/or flyer is from sources deemed reliable and is furnished subject to errors, omissions, modifications, removal of listings from sale/lease and to any listing condition. Any square footage, dimensions, floor plans and/or technical data set forth are approximations and are subject to further elaboration/confirmation.