

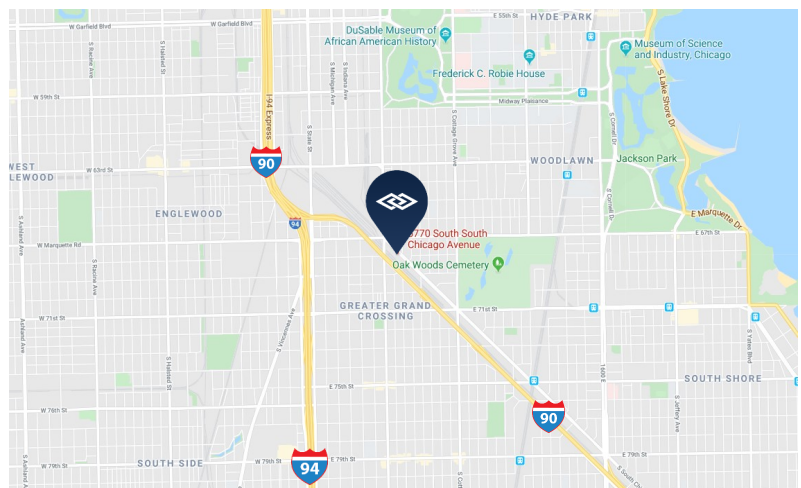
AVAILABLE FOR SALE

6770-6780 S. SOUTH CHICAGO AVENUE, CHICAGO, IL



SPECIFICATIONS

BUILDING SIZE:	13,000 SF
SITE SIZE:	52,195 SF
CEILING HEIGHT:	24' clear
LOADING:	3 drive-in doors (14' tall)
BAY SIZE:	48' x 31'
ZONING:	M1-2
REAL ESTATE TAXES:	\$11,760.95 (2018 paid 2019)
SALE PRICE:	Subject to Offer



FEATURES

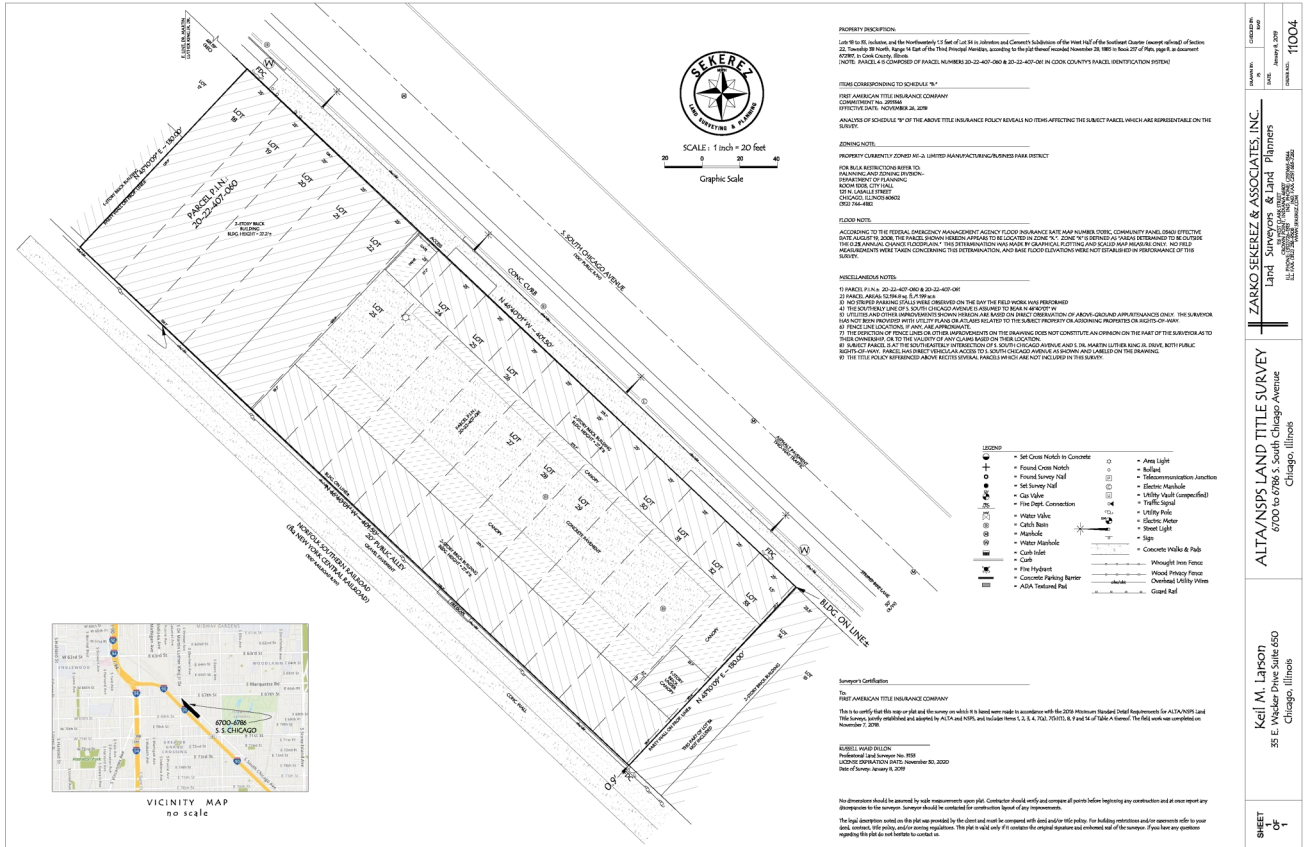
- Fully-secured yard with drive-thru access
- High ceilings in repair shop/warehouse space
- Recently updated office
- Low real estate taxes
- Close to I-90/94 and Chicago Skyway
- 20th Ward; Alderman Jeanette B. Taylor

**FOR ADDITIONAL
INFORMATION,
PLEASE CONTACT:**

JEFFREY J. PROVENZA
Vice President
jprovenza@darwinrealty.com

AVAILABLE FOR SALE

6770-6780 S. SOUTH CHICAGO AVENUE, CHICAGO, IL



FOR ADDITIONAL INFORMATION, PLEASE CONTACT: **JEFFREY J. PROVENZA**
Vice President
jprovenza@darwinrealty.com



AVAILABLE FOR SALE

6770-6780 S. SOUTH CHICAGO AVENUE, CHICAGO, IL



**FOR ADDITIONAL
INFORMATION,
PLEASE CONTACT:**

JEFFREY J. PROVENZA

Vice President

jprovenza@darwinrealty.com

970 N. Oaklawn Avenue, Suite 100 | Elmhurst, IL 60126 | Tel: 630-782-9520 | Fax: 630-782-9531 | www.darwinrealty.com

Submitted subject to error, change in status, or withdrawal without notice.