

**FOR LEASE**

# DMG Medical Building

1908 201st Place NE, Bothell, WA



## FEATURES

4,022 SF office/medical space

Built in 2010

Excellent visibility to Bothell-Everett Highway

Above-standard finishes

3.0/1,000 RSF parking ratio

Building signage available

Walking distance to numerous amenities

Triple nets \$8.00/SF (2017)

**REDUCED LEASE RATE  
\$20.00/SF, NNN**

## CONTACT

**Kyle Walderhaug**

425.450.1117

kylew@kiddermathews.com

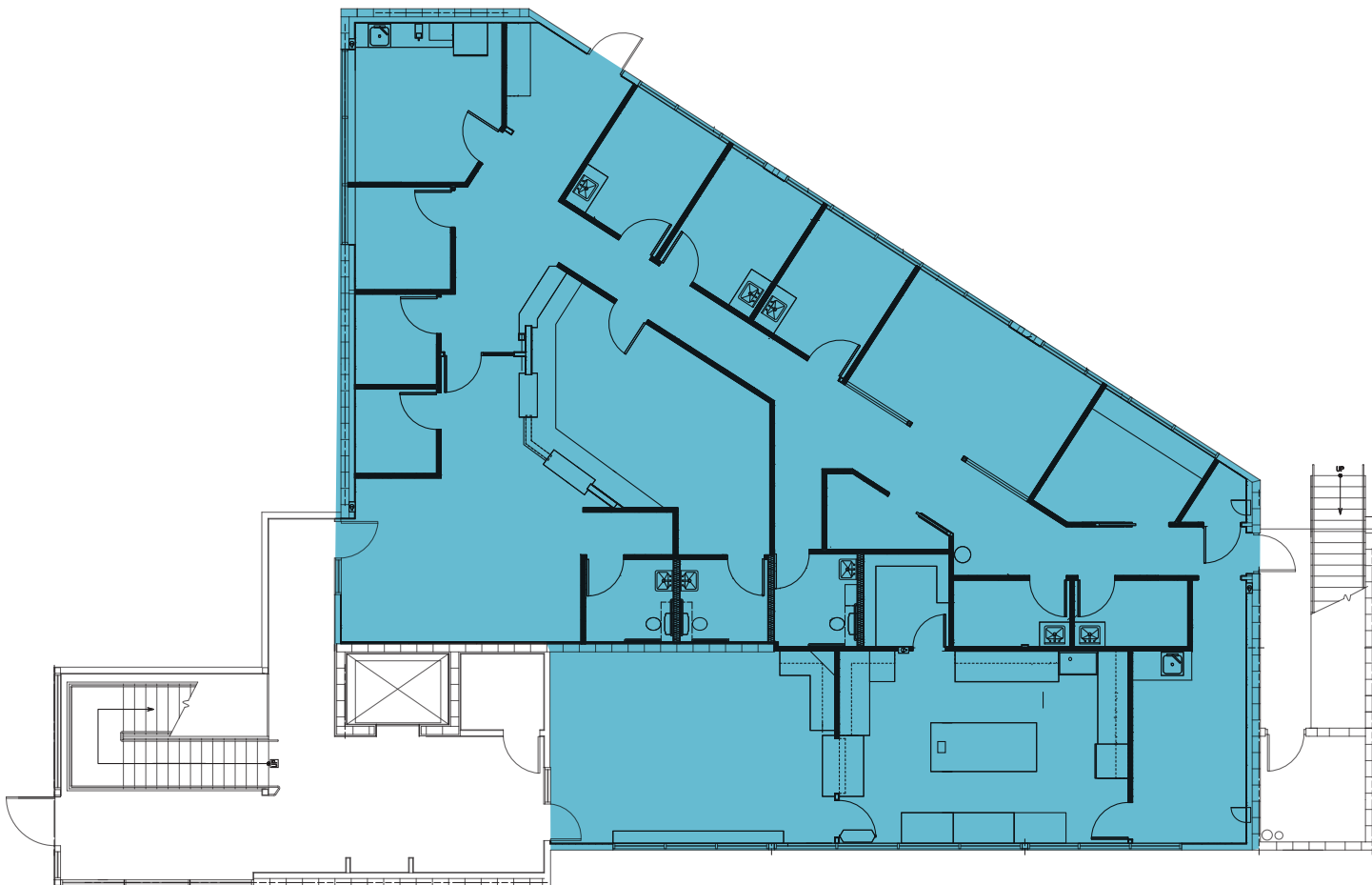


**FOR LEASE**

# DMG Medical Building

1908 201st Place NE, Bothell, WA

## FLOOR PLAN

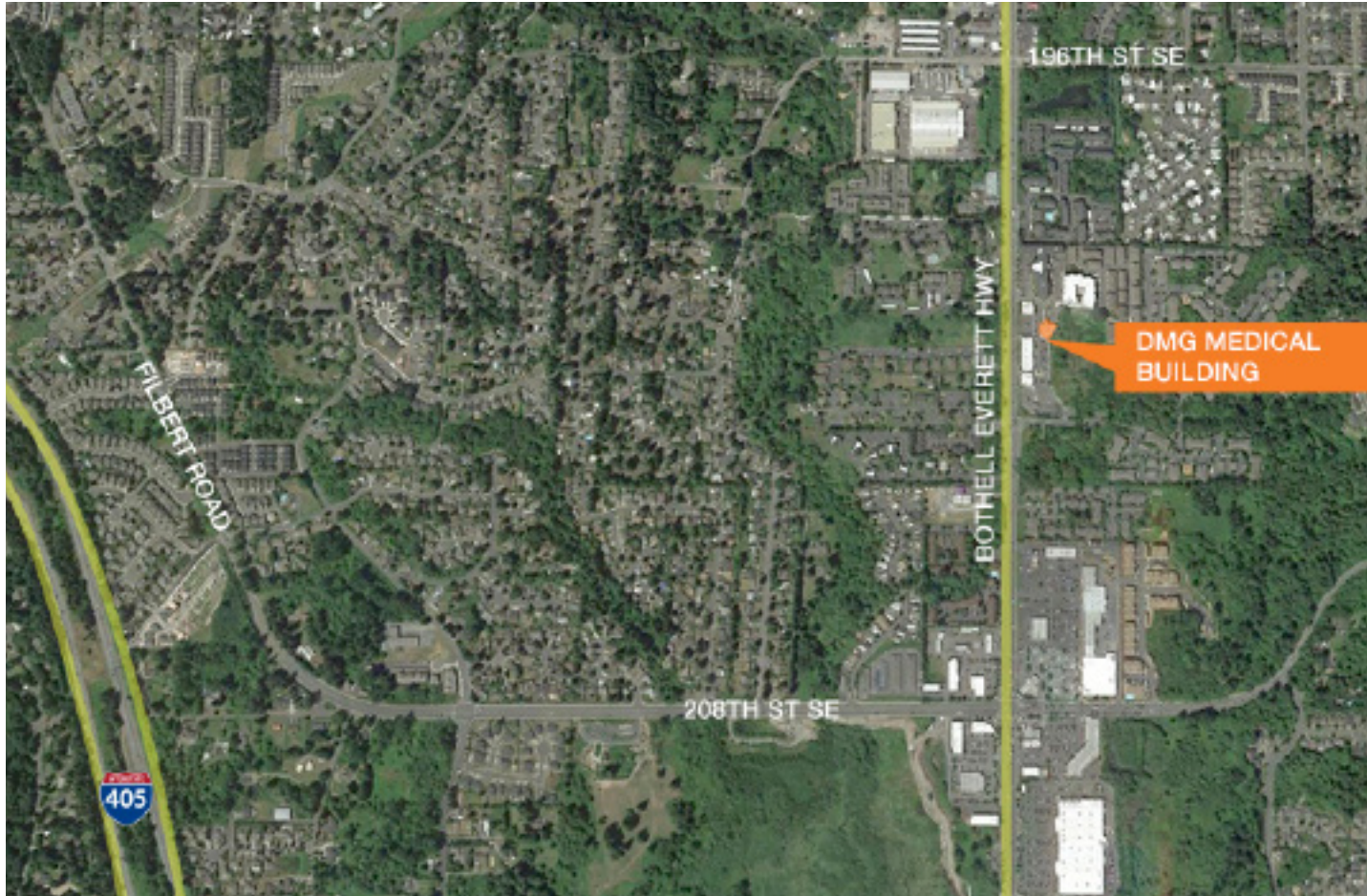


**FOR LEASE**

# DMG Medical Building

1908 201st Place NE, Bothell, WA

**AERIAL**



**CONTACT**

**Kyle Walderhaug**  
425.450.1117  
kylew@kiddermathews.com

