

FOR SALE/LEASE

88,672 SQUARE FOOT
INDUSTRIAL/MANUFACTURING BUILDING

HEAVY POWER | LARGE PRIVATE YARD



30142 AVENIDA DE LAS BANDERAS RANCHO SANTA MARGARITA

PROPERTY FEATURES:

- 88,672 SF high-image industrial/mfg. building
- 5,000 SF of office space
- 5 acre lot size
- 7,000 SF of covered loading area
- 240 car parking (2.7:1 ratio)
- 26' clearance height
- Power - 4,000 Amps
- Four (4) ground level loading doors
- Four (4) dock high loading doors
- Built in 1997
- Sale price: \$195 PSF / Lease rate: \$0.75 Net



Contact Exclusive Agents:

MARK JERUE
Senior Vice President
License ID# 01073399
949.790.3121
mjerue@lee-associates.com

CRAIG FITTERER
Senior Vice President
License ID# 01246929
949.790.3123
cfitterer@lee-associates.com

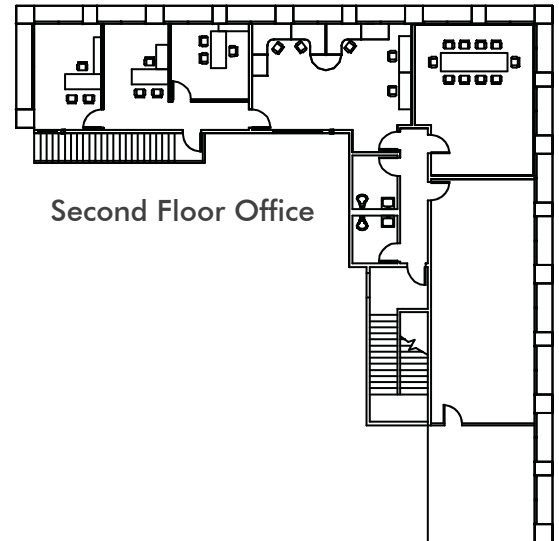
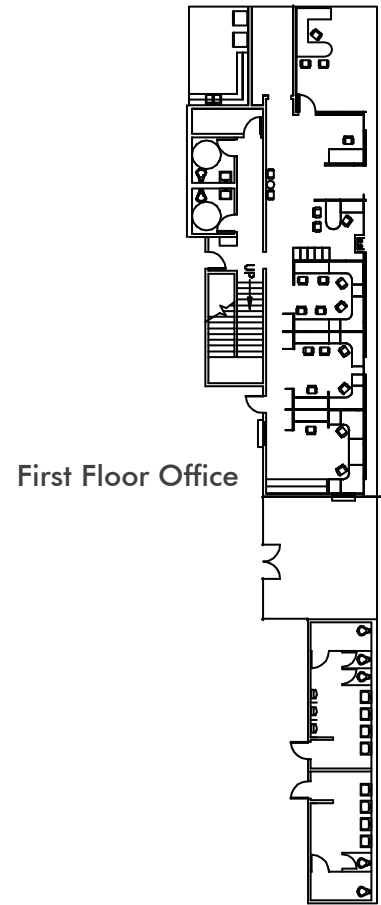
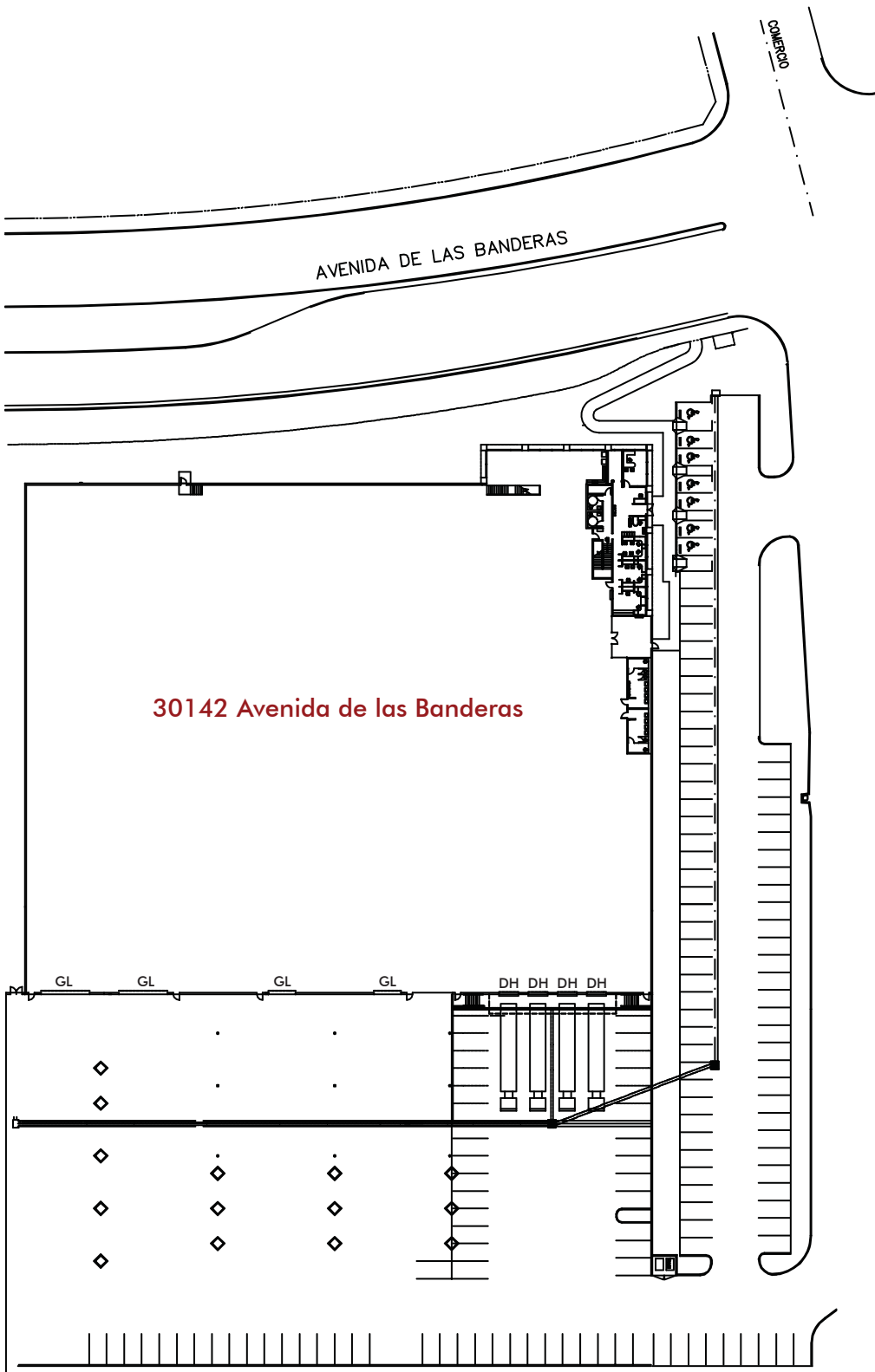


Lee & Associates - Irvine, Inc. | 9838 Research Drive Irvine, CA 92618 | www.lee-associates.com

No warranty or representation is made to the accuracy of the foregoing information. Terms of sale or lease and availability are subject to change or withdrawal without notice.

FOR SALE/LEASE

30142 AVENIDA DE LAS BANDERAS
RANCHO SANTA MARGARITA, CA



Contact Exclusive Agents:

MARK JERUE
Senior Vice President
License ID# 01073399
949.790.3121
mjerue@lee-associates.com

CRAIG FITTERER
Senior Vice President
License ID# 01246929
949.790.3123
cfitterer@lee-associates.com



Lee & Associates - Irvine, Inc. | 9838 Research Drive Irvine, CA 92618 | www.lee-associates.com

No warranty or representation is made to the accuracy of the foregoing information. Terms of sale or lease and availability are subject to change or withdrawal without notice.