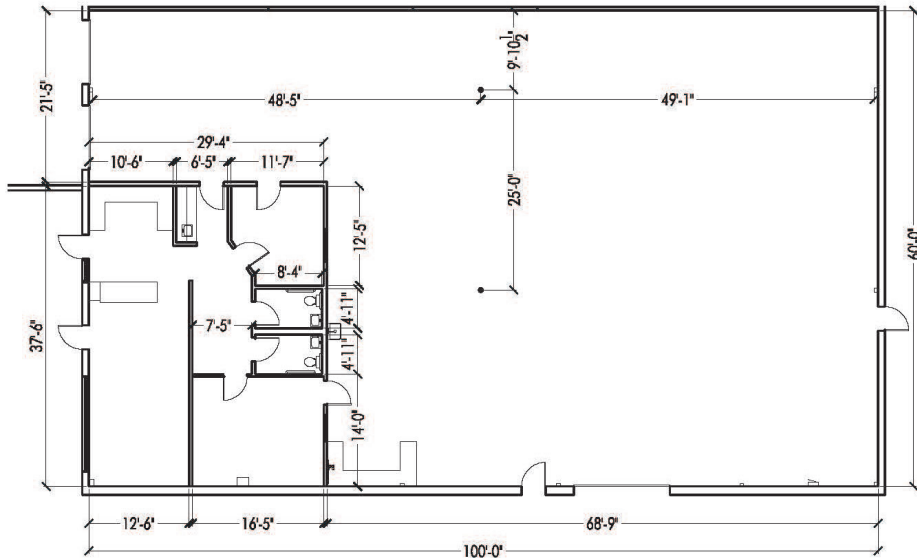


## Ideal Warehouse Distribution Location



SUITE 5900F  
6,000 SF  
⊕

### PROPERTY DESCRIPTION

Unit	5900F
Total Size	6,000 SF
Office	~ 1,100 SF
Clear Height	18'
Loading	(2) 9'w x 10'h dock high doors (1) 12'w x 14'h grade level door
Available	1/1/2022
Power	100 Amps; 208/120 Volts; 1 Phase; 3 Wire
Sprinkler	No
Rate	\$9.00/SF NNN
Other	Located in Adams County Enterprise Zone



## PROPERTY DETAILS: PARK INDUSTRIAL CENTER

Address: 5700 - 6125 E. 56th Ave.  
5800 - 6360 E. 58th Ave.  
# of Buildings: 13  
Total Building Area: 465,950 SF  
City: Commerce City  
County: Adams  
Year Built: 1983 - 2007  
Construction: Concrete block and tilt-up, metal roofs  
Owner: Kew Realty Corporation  
Location: Easy access to I-270, I-70 with I-225, I-76



## LOCATION



All information contained in this brochure, while not guaranteed, is obtained from sources deemed reliable. No representation is made as to the accuracy thereof and is submitted subject to errors, omissions, change of price, withdrawal or other conditions, without notice. It is the responsibility of either you or your agent to verify its accuracy.

**Leasing Contacts | 303-329-8100**

Jeremy Spira | [jspira@kewrealty.com](mailto:jspira@kewrealty.com)

Blake Ham | [bham@kewrealty.com](mailto:bham@kewrealty.com)

